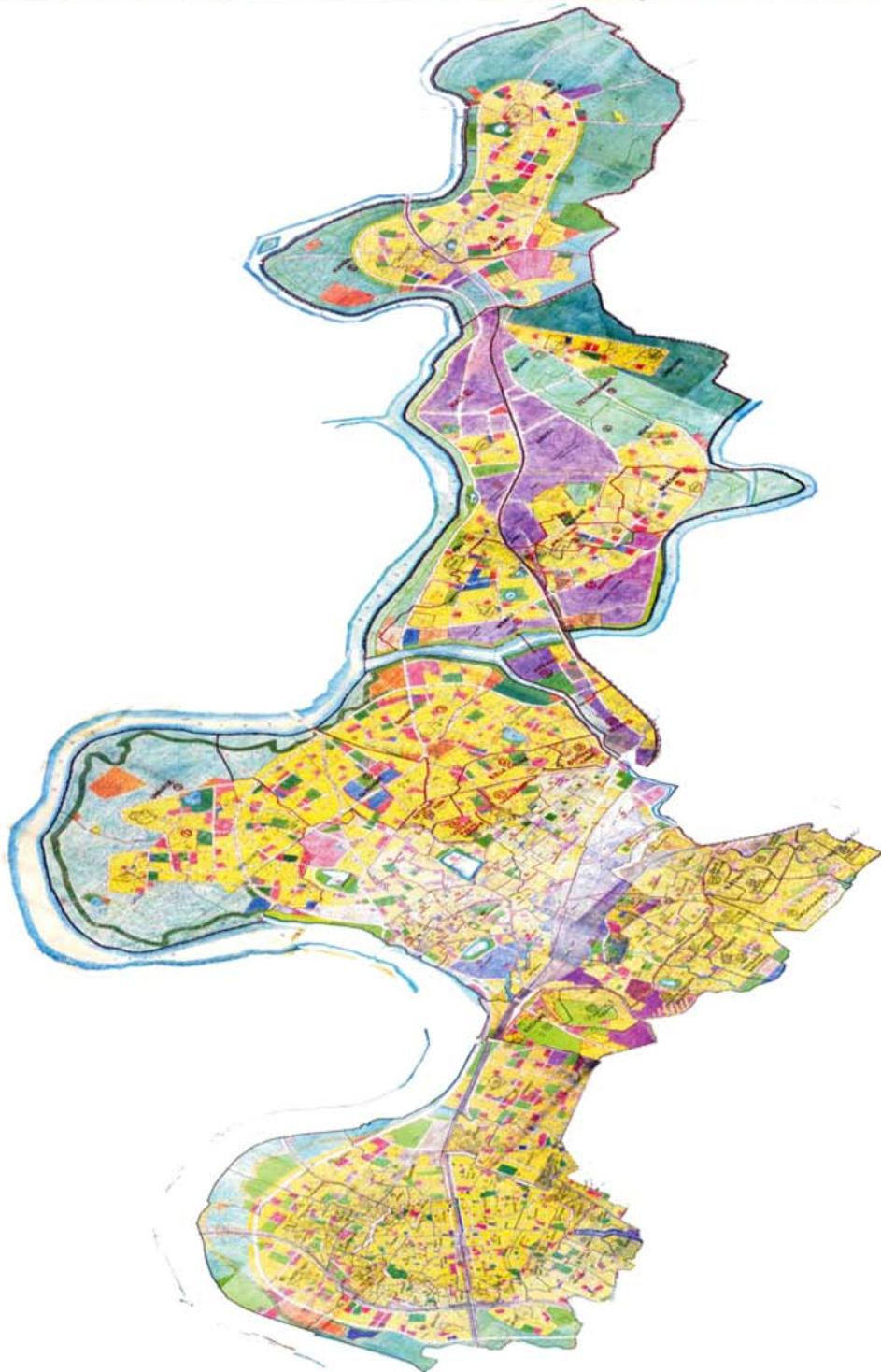


FIRE HAZARD RESPONSE AND MITIGATION PLAN



Kalyan Dombivli
Municipal Corporation

NOVEMBER 2010



Kalyan Dombivli Municipal Corporation

कल्याण डोंबिवली महानगरपालिका

जा.क्र.कडोंमपा/आयुक्त/पी.ए./

महानगरपालिका आयुक्त यांचे कार्यालय,

कल्याण - ४२१ ३०१, जिल्हा ठाणे.

कार्यालय : २२०४०६५ फॅक्स : ०२५१-२२०५८५८

दिनांक : २०/११/२०१०

कडोंमपा / डोंबिवली / मुंबई / ४२१ / १०-११

रामनाथ सोनवणे

आयुक्त

विषय :- १३ वा वित्त आयोग शिफारस व अनुदान.

शहराचा Fire Hazard Mitigation Plan तयार करणे.

संदर्भ :- अ.शा.पत्र क्रं.९१०/मअसे, दि.२०/१०/२०१०

प्रिय श्री. देशमुख साहू.

विषयांकित बाबींचे अनुषंगाने कल्याण डोंबिवली महापालिका क्षेत्राचा Fire Hazard Mitigation Plan तयार करणेत आला असून, सोबत प्रत (Soft copy/Hard copy) जोडली आहे.

आचारसंहितेचा अंमल शिथिल होताच कल्याण डोंबिवली महापालिका क्षेत्राचा आपत्कालिन व्यवस्थापन आराखडा तयार करणे प्रस्तावित असून, त्यावेळी Fire Hazard Mitigation Plan अधिक तपशिलवार करणेची तजवीज ठेवली आहे.

देशमुख,

आपला विश्वासू

(रामनाथ सोनवणे)

मा.श्री.एम.व्ही. देशमुख,

संचालक,

महाराष्ट्र अग्निशमन सेवा संचालनालय,

द्वारा महाराष्ट्र औद्योगिक विकास महामंडळ,

उद्योग सारथी बिल्डींग, २ रा मजला,

अग्निशमन विभाग, महाकाली गुंफा मार्ग,

अंधेरी (पू.) मुंबई-९३.

CONTENTS

- Executive Summary.
- Abbreviations.
- Glossary of terms.

SECTIONS	PARTICULARS	PAGE NUMBERS
1.	City Profile.	10
2.	Response Mechanism And Incident Management.	16
	2.1 Introduction.	16
	2.2 Ward – A.	18
	2.3 Ward – B.	23
	2.4 Ward – C.	26
	2.5 Ward – D.	31
	2.6 Ward – F.	36
	2.7 Ward – G.	41
	2.8 Ward – H.	44
3.	Planning, Resource & Management.	49
Annexure 1	Gap analysis for fund requirement as per standing fire advisory council.	53
Annexure 2	Fact Sheet as per format for fire and hazard response and mitigation plan by Directorate of Maharashtra Fire Service, Mumbai.	54
Annexure 3	SOP for attending emergency.	74

ABBREVIATIONS

SHORT FORM	FULL FORM
CDP	: City Development Plan.
DCR	: Development Control Rules (particularly of Kalyan Dombivli Municipal Corporation).
DP	: Development Plan.
DPR	: Detailed Project Report.
GIS	: Geographical Information System.
GOI	: Government of India.
GOM	: Government of Maharashtra.
KDMC	: Kalyan Dombivli Municipal Corporation.
MIDC	: Maharashtra Industrial Development Corporation.
MPCB	: Maharashtra Pollution Control Board.
MSEDCL	: Maharashtra State Electricity Distribution Company.
MAH	: Major Accident Hazard.
DISH	: Department of Industrial Safety and Health.
BDO	: Block Development Officer.
BSNL	: Bharat Sanchar Nigam Limited.

GLOSSARY OF TERMS

National Building Code Of India, 2005.	Means the book containing Fire Prevention and Life Safety Measures to be implemented in the Buildings, Places, Premises, Workshops, Warehouses and Industries, published by the Bureau of Indian Standards from time to time, with or without amendments.
Chief Fire Officer.	Means the Chief Fire Officer or any other officer by whatever designation called in charge of the fire brigade maintained by a local authority or a planning authority.
Fire Prevention and Life Safety Measures.	Means such measures as are necessary in accordance with the building by-laws or as required by or under the provisions of any law or the National Building Code Of India - 2005, for the time being in force, for prevention, control and fighting of fire and for ensuring the safety of life and property in case of fire.
MAH Factory.	Major Accident Hazards (MAH) Factory means an industrial activity (including transport through carrier or pipeline) ordinarily handling hazardous chemical equal to or in excess of the threshold quantities specified in Column 3 of the Schedule 2 of "The Maharashtra Factories (Control of Industrial Major Accidents Hazards) Rules 2003".
Hazardous Material.	Means;
	I) Radio active substances;
	II) Material which is highly combustible or explosive and/ or which may produce poisonous fumes or explosive emanations, or storage, handling, processing or manufacturing of which may involve highly corrosive, toxic or noxious alkalis or acids or other liquids.
	III) Other liquids or chemicals producing flame, fumes, explosive, poisonous, irritant or corrosive gases or which may produce explosive mixtures of dust or fine particles capable of spontaneous ignition.

EXECUTIVE SUMMARY

1. INTRODUCTION

The Kalyan Dombivli Municipal Corporation has been formed vide Order of the Government of Maharashtra G.N.U. Dept. KCC/1082/229/CR-18(III)UD-20 dated 26 September, 1983 with effect from 01/10/1983 under B.P.M.C. Act, 1949. The functions to be carried out are mentioned in the 12th Schedule are enumerated from Section 63 to 67 of Bombay Provincial Municipal Corporation Act, 1949 (B.P.M.C. Act, 1949).

The total area of KDMC is 67.65 sq. kms and the entire municipal area is divided into 7 administrative wards and further divided into 107 electoral wards. By virtue of its strategic location and nearness to Mumbai City, Kalyan Dombivli is fast developing as a hub for economic activities like services, trade and commerce, education etc. Ganesh Mandir an ancient Maha Ganpati Mandir is located in the city where thousands of devotees visit daily. Titwala has also become the tourist spot of this region.

2. DEMOGRAPHY

Ward wise Population of KDMC as per as per censuses 2001 is as follows:

SR. NO.	WARD	POPULATION (AS PER CENSES 2001)	AREA SQ. KM	POPULATION DENSITY
1.	A Ward.	90,627	19.03	4,762/ sq.km
2.	B Ward.	1,35,340	15.23	8,886/ sq.km
3.	C Ward.	1,29,128	4.25	30,383/ sq.km
4.	D Ward.	2,46,449	7.45	33,080/ sq.km
5.	F Ward.	1,27,774	15.26	16,047 sq.km
6.	G Ward.	1,17,114	(approx.)	
7.	H Ward.	2,00,865	6.43	31,239/ sq.km
	TOTAL	10,47,297	67.65	

3. NEED FOR THE FIRE HAZARDS RESPONSE AND MITIGATION PLAN

The Fire Hazard Response and Mitigation Plan is mandatory for cities having population exceeding 1 million as per directions from “The Director of Maharashtra Fire Service”, Mumbai. Hence, this exercise is carried out.

FIRE HAZARD RESPONSE AND MITIGATION PLAN

4. OBJECTIVES

1. Preparation of Fire Hazard Response and Mitigation Plan and its publication in state's official gazette is one of the mandatory recommendations of the 13th Finance Commission.
2. Scaling and determination of type of Fire Stations and requirement of additional fire fighting and rescue equipments.
3. Evaluation of gaps, deficiencies and fixing the specification of equipments, buildings, communication etc.
4. To enable calculation of the requirement of the funds.
5. Making the plan as a dynamic and practical document.

5. SCOPE

The Fire Hazard Response and Mitigation Plan covers the present area under jurisdiction of Kalyan Dombivli Municipal Corporation, for ease the limits of the KDMC jurisdiction are shown in the map on page number 11.

It is pertinent to note that due to additional loading the present infrastructure of fire fighting services of KDMC are strained as listed below:

1. Provision of fire services provides fire services to the MIDC Industrial Area that houses 7 MAH.
2. Provision of fire services provides fire services to the twenty seven villages excluded from KDMC jurisdiction.
3. Provision of fire services to the North Ward rural area up to approximately 70 km. includes Karjat, Kasara, Shahapur, Malshej Ghat, Murbad.

6. DATA COLLECTION

Relevant data of present status is collected using the basic format laid down by "The Fire and Hazard Response and Mitigation Plan by Directorate of "Maharashtra Fire Service", Mumbai. The fact sheet is enclosed as Annexure 1 to this report.

FIRE HAZARD RESPONSE AND MITIGATION PLAN

Series of brain storming sessions were held with the stake holders and concerned people for scaling and determination of type of Fire Station and additional fire fighting and rescue equipment requirement. This report elaborates the justification for the estimated requirements.

7. CITY PROFILE

City profile provides information on location and linkages area of jurisdiction of Kalyan Dombivli Municipal Corporation and salient features of Kalyan Dombivli, existing land use analysis the present status of the fire services.

8. DC Rules

Development Control Regulations for Kalyan Dombivli Municipal Corporation, came in to force on 2nd February 2004 and 18th January 2006 being the date on which they were sanctioned by the state Government under sub-section (modification vide No. TPS-1202/460/CR-41/2002/UD-12 dated 16/01/2004) (1) of Section 31 of “The Maharashtra Regional and Town Planning Act, 1966”. Highlights of the City Development Rules KDMC 2004 are reproduced in the text of the report as and when they are referred.

9. RISK AND VULNERABILITY ASSESSMENT

Identification of hazards qualitatively is carried out by collecting historical hazard data. However, there is no quantification of Potential Fire hazard Risk in the City. There is Potential Fire Risk in the City especially in high rise buildings, unorganised Houses like Zopadpattis & Slum area and increased hazard due to inaccessibility to the buildings.

10. RESPONSE AND MITIGATION RESPONSE MECHANISM AND INCIDENT MANAGEMENT

Wardwise area maps showing Area of jurisdiction of each administrative ward of Kalyan Dombivli Municipal Corporation.

- Ward jurisdiction.
- Zone map of the ward.

FIRE HAZARD RESPONSE AND MITIGATION PLAN

Following zones as shown on the map using specified color code.

Residential.	Public Utility.	Traffic And Transport.
Industrial.	Recreational.	Green Zone.
Commercial.	Public Purpose.	Water Bodies.
		Zuggi Area.

- Highlights of the risks.
- Communication chart.
- List of resources available at local fire station in the ward.
- SAFC norms stipulates one fire station based on area and response time is also specified. However, considering the topography in the KDMC area it is not practicable to achieve the response time norm unless the number of fire stations are located at strategically located. Therefore, there is deficiency of eight fire stations in KDMC area. The proposed locations are marked on the ward wise map for ready reference.
- Fire station manpower details.
- Fact sheet of the factories.

11. PLANNING

Evaluation of gaps, deficiencies and fixing the specification of equipments, buildings, communication, etc. to enable calculation of the requirement of the funds, scaling and determination of type of Fire Station, additional fire fighting and rescue equipment requirement are listed in the following table.

12. ADEQUACY AND FUTURE REQUIREMENT OF RESOURCES FOR FIRE AND EMERGENCY SERVICES

SR. NO.	TYPE OF VEHICLES	EXISTING	FUTURE
1.	Number of Fire Stations.	4	8
2.	Water Tenders.	6	20
3.	Rescue Tenders.	0	2
4.	Advance Emergency Rescue Tenders.	0	2
5.	Flood & Rescue Tenders.	0	2
6.	Hazmat Vans.	0	1
7.	Turn Table Ladders.	0	1
8.	Hydraulic Platforms.	0	2

FIRE HAZARD RESPONSE AND MITIGATION PLAN

SR. NO.	TYPE OF VEHICLES	EXISTING	FUTURE
9.	DCP Tenders.	0	0
10.	Foam Tenders.	0	2
11.	Smoke Blowers.	0	2
12.	Control Post Vans.	0	1
13.	Water Tankers.	1	8
14.	Ambulances.	1	4
15.	Cars.	0	2
16.	Jeeps.	0	5
17.	High Pressure Portable Pumps.	0	4
18.	Portable Pumps.	3	10
19.	Breathing Apparatus Sets.	10	50
20.	Flood Rescue Boats.	8	5
21.	Life Jackets.	30	200
22.	Details Of Others Appliances & Equipment.	—	—
	1. Breathing Apparatus Compressor.		1
	2. Rapid Response Vehicle.		4
	3. Mini Fire Tender.		4
	4. Rapid Response Bike with Water Mist Portable System.		12

13. COMMENTS

1. Fire Service set up should be based on population, response time and risk hazard analysis. As it is difficult to decide on specific/ special equipment required at a particular Fire Station. In absence of Risk Hazard Analysis, a through vulnerability analysis need to be carried out in order to provide inputs for disaster management plan preparation.
2. Preparation of “Disaster Management Plan” for the area based on developing various credible accident scenarios and elaborate action plan is also required.
3. Upgradation of communication facilities such as Mobiles, Telephones Wireless System, Internet Connectivity, Mass Communication Systems such as Radio, TV, Cable for effective communication and training facilities to proper response in disasters. Provision of GPS devices and vehicle tracking system to help the co-ordination of vehicles movement.
4. Documentation and rationalization of SOP’s at each fire station for efficient working.
5. Mapping of the area for accessibility.
6. Increasing the frequency of Mock Drill.
7. Mass Awareness Programs for the convenience of the stakeholders are required to achieve the desired goal.

Shri. Ramnath Sonawane

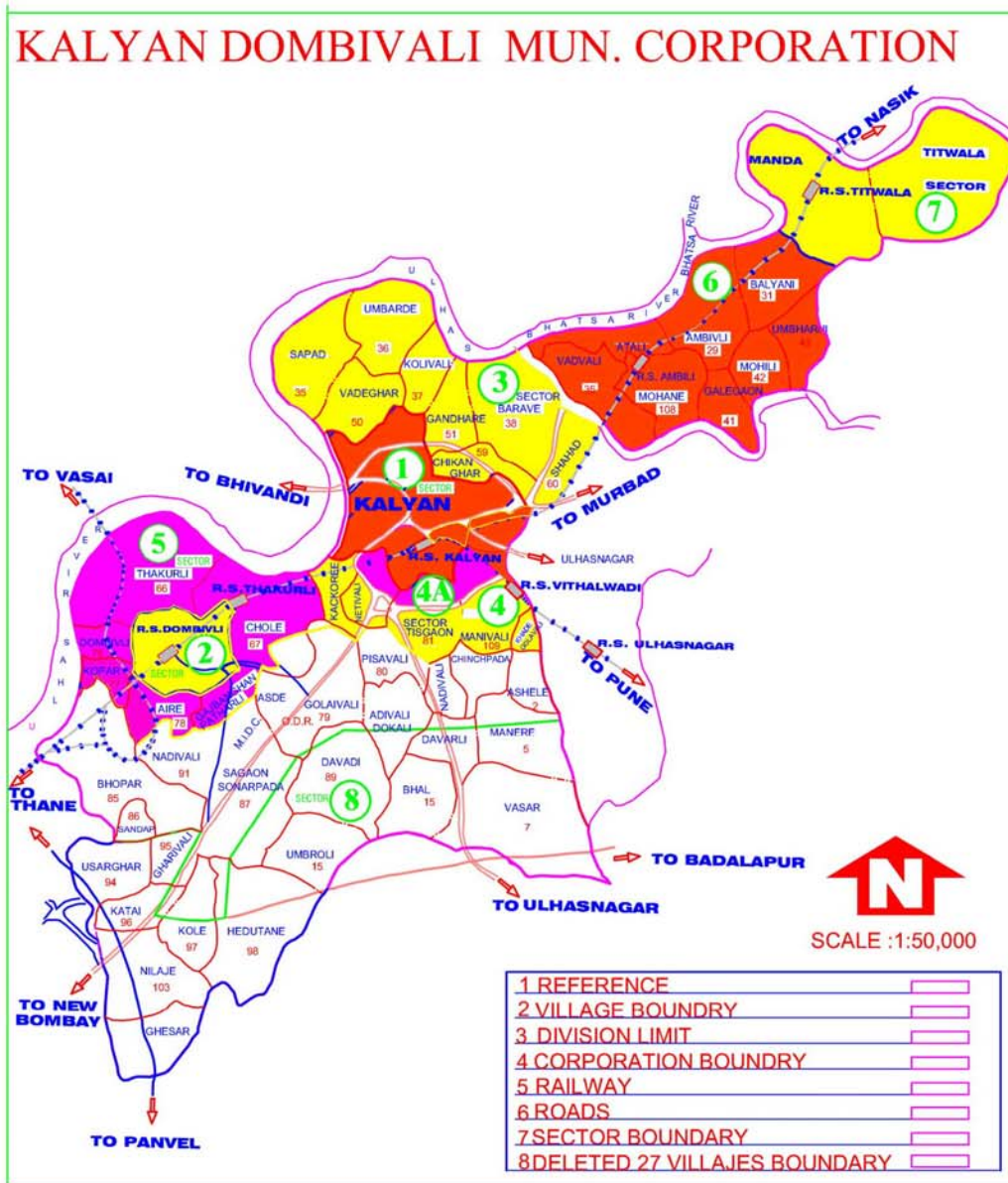
MUNICIPAL COMMISSIONER

KALYAN DOMBIVLI MUNICIPAL CORPORATION

SECTION 1: CITY PROFILE

LOCATION AND LINKAGES

AREA OF JURISDICTION OF KALYAN DOMBIVILI MUNICIPAL CORPORATION



Kalyan situated on the Kalyan – Murbad highway and 54 Kms away from Mumbai, is an important Taluka of Thane district. It is well connected to both Thane and Mumbai by the central railway. It is also an important railway junction for Kalyan – Pune (South – East) and Kalyan – Nashik (North – East) bound trains, with plans for Kalyan – Ahmednagar Railway coming up in the near future.

FIRE HAZARD RESPONSE AND MITIGATION PLAN

TABLE: SALIENT FEATURES OF KALYAN DOMBIVLI

City	: Kalyan.
District	: Thane.
Area	: Total area : 67.65 sq. kms. Developed Area : 46.94 sq.kms Undeveloped Area : 20.71 sq.kms.
Geographic	: Location 19° 4' to 19° 14" North Latitude and 72° 9' to 72° 17' East longitude.
Elevation	: 5 to 50 mts. above the mean sea level.
Connectivity	: Road: City is well connected by a road network with the capital city (Mumbai) & the urban center of the state and neighboring states.
Rail	: Kalyan is an important Railway Junction on the central railway. And is well connected by rail network with Mumbai & other important cities of the nation. Due to an efficient local train network, the city has gained, importance of being a suburb of Mumbai.
Climate	: Moderately humid tropical climate with maximum temperature of 41 °C & minimum temp of 17°C. Annual rainfall- ranges between 1900 mm to 2700 mm.
City Administrator	: Kalyan Dombivli Municipal Corporation.

By virtue of its strategic and nearby location from Mumbai city Kalyan Dombivli city is fast developing as a hub for economic activities like services, trade and commerce, education etc. Also, in Kalyan, is located the Titwala Ganesh Mandir, an ancient Maha Ganpati mandir where thousands of devotees visit this temple daily. Titwala has also become the tourist spot of the sub region.

REGIONAL SETTING

By virtue of its strategic and nearby location from Mumbai city Kalyan Dombivli city is fast developing as a hub for economic activities like services, trade and commerce, education etc. Also in Kalyan, is located the Titwala Ganesh Mandir, an ancient Maha Ganpati mandir where thousands of devotees visit this temple daily. Titwala has also become the tourist spot of the sub region.

GEOGRAPHY

Kalyan Dombivli is located in Thane District of Maharashtra about 54 kms from Mumbai. It is situated between latitude 19° 4' to 19°14' North and longitude 72° 9' to 73° 17' East. It lies in the coastal plain between Thane creek and Ulhas river.

FIRE HAZARD RESPONSE AND MITIGATION PLAN

TOPOGRAPHY AND DRAINAGE CHANNELS

KDMC has an undulated topography with ground levels ranging from 5 mt. to 50 mt. above the mean sea level. However areas near Ulhas creek on the North side are relatively flat. The river Ulhas, Kalu & also Waldhuni flow in this region. The city is mainly divided in to East and West with the central railway forming this division.

CLIMATE

Kalyan Dombivli has a moderately humid tropical climate due to nearness to Ulhas creek, Bhatsta & Ulhas rivers. Hot summer with maximum temperature of 41° C and moderate hot summer with minimum temperature of 17°C are experienced by the people in KDMC area. The monsoon is predominant during the months of June, July, August and September and the rainfall ranges between 1900 mm to 2700 mm. whereas 75 % rainfall is received during July and August. During heavy rains accompanied by high tides in the creeks, low-lying parts of Kalyan (W) and also Dombivli (W), oftenly face water logging problems.

AREA AND POPULATION

The total area of KDMC is 67.65 sq. kms and the entire municipal area is divided into 7 administrative wards and 107 elected wards. Kalyan Dombivli Municipal Corporation came into existence way back in October 1983. In 2002, KDMC area was limited to 67.65 sq.Km, due to omission of 27 villages and MIDC area from KDMC. The population of the said deleted area worked out to be 1,46,215 according to census document. Hence, the population base for KDMC can be considered as 10,47,297 (11,93,512 to 1,46,215).

Population Density of the City is 861/ hector.

TABLE NO: EXISTING LAND USE ANALYSIS

SR. NO.	DESCRIPTION	AREA IN HECTOR
(A)	DEVELOPED AREA.	
1.	Residential.	1082.98
2.	Commercial.	46.77
3.	Industrial/Service Industry.	185.57
4.	Public Purpose.	43.09
5.	Public Utility.	21.78
6.	Open Space/ Play Ground/ Garden.	15.66
7.	Traffic & Transport.	—
8.	Roads.	208.88
9.	Bus Depot.	7.61
10.	Railway.	317.20
	Total Developed Area (A).	1929.54

FIRE HAZARD RESPONSE AND MITIGATION PLAN

SR. NO.	DESCRIPTION	AREA IN HECTOR
(B)	UNDEVELOPED AREA.	
1.	Green Zone.	4718.50
2.	Agricultural Land.	3117.38
3.	Remaining Green Zone.	1601.12
4.	Water Bodies.	117.77
	Total Undeveloped Land.	4836.27
	TOTAL (A) + (B)	6765.91

FUNCTIONAL DOMAIN OF KDMC

The Kalyan Dombivli Municipal Corporation has been formed vide Order of the Government of Maharashtra G.N.U. Dept. KCC/1082/229/CR-18(III)UD-20 dated 26 November, 1983 with effect from 01/10/1983 under B.P.M.C. Act, 1949. The functions to be carried out are mentioned in the 12th Schedule are enumerated from Section 63 to 67 of Bombay Provincial Municipal Corporation Act, 1949 (B.P.M.C. Act, 1949)

Formation of 7 wards has taken place in the years 1997 as under: Wards Area covered

A – Ward	Mohane, Titwala, Shahad, Ambivali & Atali.
B – Ward	Umbarde, Sapad, Gouripada, Rambag & Syndicate area.
C – Ward	Dudhnaka, Parnaka, part area of old Kalyan Municipal Council Limits.
D – Ward	Kalyan (E), Kolsewadi, Katemanivli, Tisgaon, Khade, Golavli,
E – Ward	Deleted from KDMC limit in 2002.
F – Ward	Atharli, Chole, Khambalpada, Pendse Nagar & part area of Old Dombivili Council Limits.
G – Ward	Ayare, Ramchandra Nager, Gandhi Nagar & part area of Old Municipal Council Limits.
H – Ward	Dombivili (West), Kopar, Mothagaon Thakurli, Shivaji Nagar, Maharashtra Kumbhar Khan Pada & West Side of Ex. Municipal Limits.

FIRE HAZARD RESPONSE AND MITIGATION PLAN

ROAD NETWORK

The Kalyan Murbad National Highway & Kalyan – Shil Road are the major corridors through KDMC area. The major arterials roads in city are Murbad Road, Shivaji Path, Santoshi Mata Road, Ambivali to Titwala Road, Puna Link Road, Agra Road, Manpada Road, Gupte Road etc.

Identification of hazards qualitatively is carried out by collecting historical hazard information however, there is no quantification of Potential Fire Risk in the City.

Places of Public Gathering Places such as Cinema Halls/ Malls/ Drama Theaters, Exhibition/ Public Function Grounds where permission for erecting pedals for circus or any other religious/ social functions are granted. Floating Population at Pilgrims Area are having potential for hazards. Road and Railway Network Ship Building Docks. Vital Installations in the City such as Headquarters of major Government and Semi Government Organisations, Industrial area and chemical zone There are 2 identified MAH factories in KDMC area and another 7 MAH factories in MIDC Dombivli area outside the KDMC limits. Cross Country Pipelines of Natural gas are identified. Last five years data on fire stations calls is used for the probability of the fire risk. Details of the Risk and vulnerability assessment – identification of city specific hazard and assessment of risks involved (vulnerability analysis) are provided in the following section of this report.

FIRE SERVICES

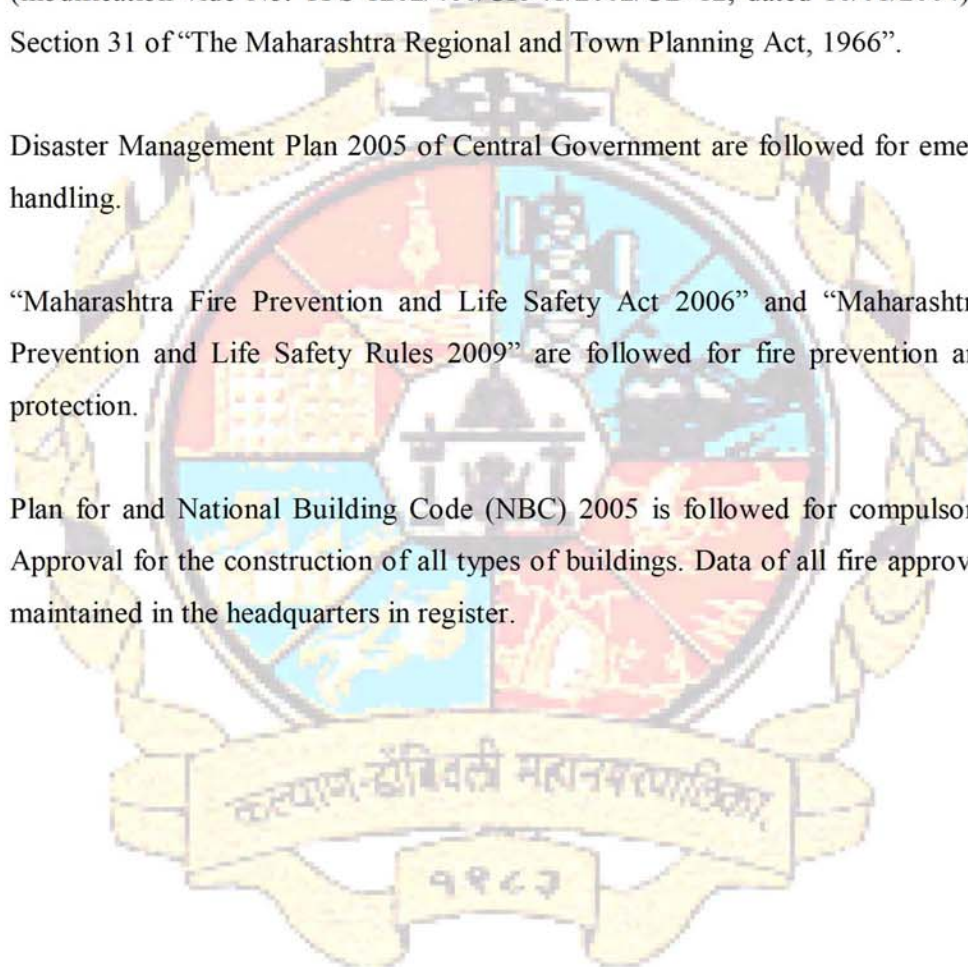
Name of the Authority maintaining Fire & Emergency Services.

Name	: Mr. Ramnath Sonawane.
Designation	: Commissioner. Kalyan Dombivli Municipal Corporation, Kalyan.
Address with Pin code	: Municipal corporation Head Quarters. Shankarao Chowk, Kalyan, District: Thane.
Telephone No. (with STD Code)	: 0251 – 2204329.
Fax No.	: 0251 – 2205858.
Mobile No.	: 9967440222
E – Mail	: kdmc-commissioner@in.com
Website	: www.kdmc.gov.in

FIRE HAZARD RESPONSE AND MITIGATION PLAN

LEGAL

1. Fire & Emergency Service is governed by “Bombay Provisional Municipal Corporation Act 1949” (BPMC). Bom LIX1949.
2. Development Control Regulations for Kalyan Dombivli Municipal Corporation, come in to force on and from date: 2nd February 2004 and 18th January 2006 being the date on which they are sanctioned by the state Government under sub-section (modification vide No. TPS-1202/460/CR-41/2002/UD-12, dated 16/01/2004) (1) of Section 31 of “The Maharashtra Regional and Town Planning Act, 1966”.
3. Disaster Management Plan 2005 of Central Government are followed for emergency handling.
4. “Maharashtra Fire Prevention and Life Safety Act 2006” and “Maharashtra Fire Prevention and Life Safety Rules 2009” are followed for fire prevention and fire protection.
5. Plan for and National Building Code (NBC) 2005 is followed for compulsory Fire Approval for the construction of all types of buildings. Data of all fire approvals are maintained in the headquarters in register.



SECTION 2: Response Mechanism & Incident Management.

2.1 INTRODUCTION

Area of jurisdiction of each Ward of Kalyan Dombivili Municipal Corporation is shown in the map of the ward on following pages. Following color code is used for various zones as shown on the map.

- 1. Residential.
- 2. Industrial/ Chemical.
- 3. Commercial.
- 4. Recreational.
- 5. Public Purpose.
- 6. Public Utility.
- 7. Traffic And Transport.
- 8. Green Zone.
- 9. Water Bodies.
- 10. Zuggi Area. XXX

RESIDENTIAL ZONE	COMMERCIAL ZONE
Housing For Dishoused (HDH).	C-1 And C-2 Zone.
Economical Weaker Section Housing (EWS).	Vegetable Market (VM)/ Shopping Center (SC).
Municipal Housing/ MPL Staff Quarter (MSQ).	Fish Market (FM).
Government Housing/ MAHADA.	Meat Market (MM).
Slum Improvement Scheme (SIS).	Timber Depot/APMC/Hawker Zone.
	Slaughter House/ Milk Cattle Stable.
PUBLIC UTILITY ZONE	
Sewerage Treatment Plan.	TRAFFIC AND TRANSPORT ZONE
Dumping Ground.	Maharastra State Road.
Water Supply.	Transport Corporation (MSRTC).
Cremation Ground/ Burial Ground (CG/BG).	Kalyan Municipal Transport (KMT) Bus Station.

FIRE HAZARD RESPONSE AND MITIGATION PLAN

INDUSTRIAL /CHEMICAL ZONE	TRAFFIC AND TRANSPORT ZONE
Service Industries.	Parking (PK).
Municipal Workshop.	Railway Activity.
	Transport Nagar.
PUBLIC PURPOSE ZONE	Truck Terminus.
High School (HS).	Ferry.
Primary School (PS).	PUBLIC PURPOSE ZONE
College.	Drama Theatre (DT)/Town Hall.
Engineering College.	Swimming Pool (SWP).
Gymnasium.	Maharashtra State Electricity Board (MSEB).
Cultural Welfare Centre (CWC).	Octroi Naka.
Women Welfare Centre (WWC).	Regional Transport Office (RTO).
Post Office (PC).	Boys Hostel.
Telephone Exchange (TE).	Muster Shed (MS).
Police Station (PS).	
Police Chowky (PC).	RECREATIONAL ZONE
Art Gallery.	Garden (G).
Government Offices.	Park.
Ward Office (WO).	Play Ground (PG).
Cattle Pound (CP).	Recreational Ground (RG).
Veterinary Hospital (+VH).	Children Play Ground (CPG).
Library (Lib).	Beautification of Tank & Garden.
Dispensary/ Maternity Home (D/ MH).	Tot Lot.
Hospital (H).	
Municipal Purpose/ KDMC Administrative Bldg.	WATER BODIES ZONE/ GREEN ZONE (G I, G II)
Fire Brigade (FB).	Tank, Nala, River, Creek.
ZUGGI AREA	Costal Regulation Zone (CRZ I, II, III).

FIRE HAZARD RESPONSE AND MITIGATION PLAN

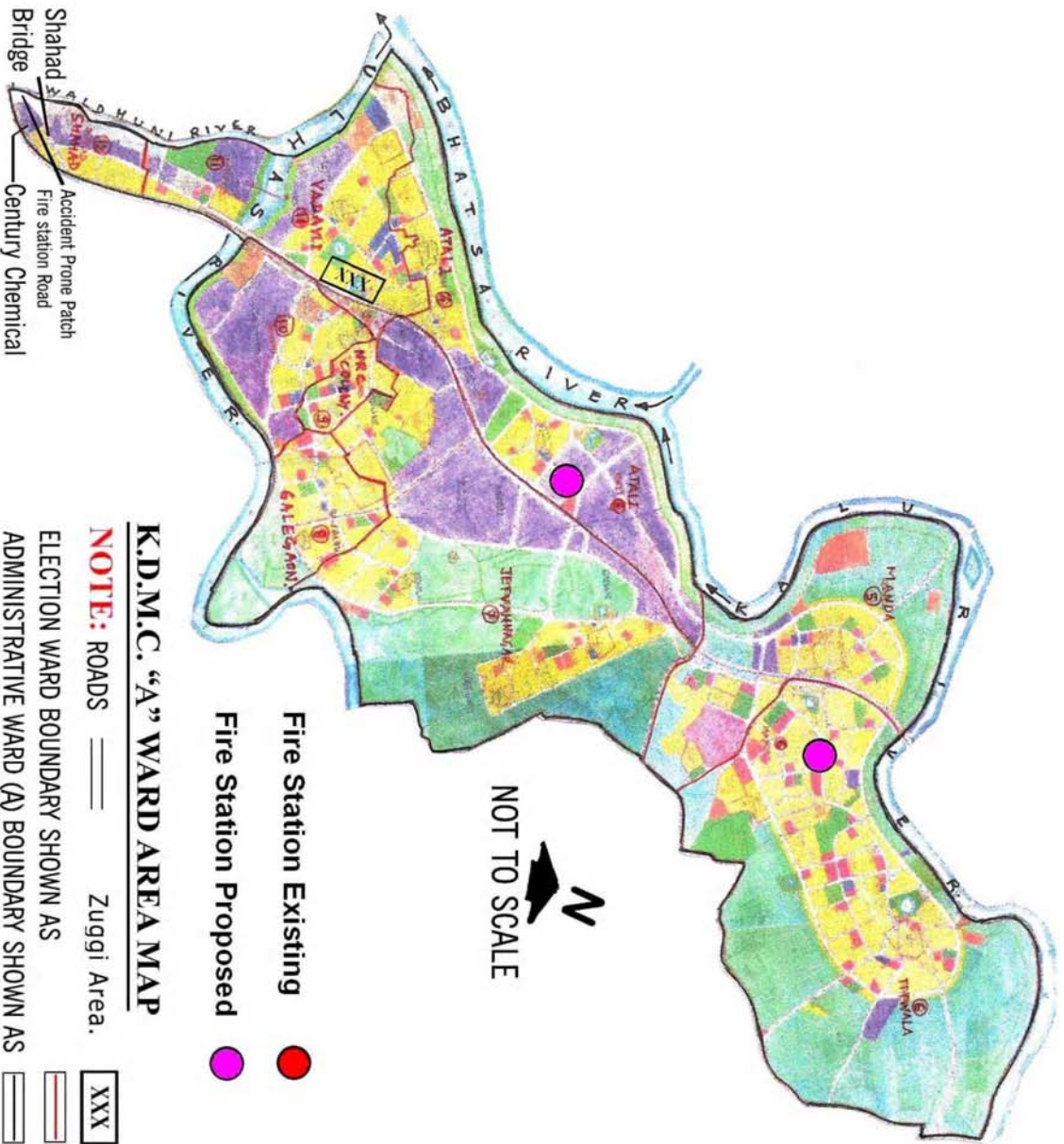
2.2 WARD NO. – A

Jurisdiction.	: Vadavali, Mohane, Titwala, Shahad, Ambivali, Manda & Atali.
Area.	: 19.03 sq. km.
Population.	: 90,627 (as per 2001 censuses).
Fire Station.	: There is no fire station at “A – Ward” Adharwadi fire station provides service this area.
Proposed Fire Station.	: Plot reserved for fire station. 1. Ambivli fire station: Property No. 47, Survey No. 2 (part), Survey No. 3 (part), Area 4100 sq. m. 2. Manda – Titwala fire station: Property No. 52, Survey No. 47 (part), Survey No. 50 (part), Survey No. 223 (part), Area 4900 sq. m.
Plot Reserved For Fire Station.	Rural area, low population density, industrial belt, Nirmal life style, Jupiter, Raheja high rise buildings are coming up in this area, Ulhas, Kalu and Bhatsa meeting to creek, flood prone area, Titwala Mandir floating population, Mohane and Ambivli, congested area, Existing response time exceeds SFAC (Standing Fire Advisory Committee). The major arterials roads are Ambivali to Titwala Road.
Flood.	: Flood prone area.
Dilapidated Buildings.	: 6 Nos.
Unsafe Buildings.	: 8 Nos.
Accident Prone Patches.	: Shahad Bridge.
Major Hazardous Units.	: 1 No.
Pilgrims Area (Floating population)	: Titwala Ganesh Mandir
Major Bridges.	: ROB Shahad.

BUILDINGS

TYPE	ZONE	MIX	RESIDENTIAL	NON-RESIDENTIAL	TOTAL
	1	46	1697	259	2002
	2	165	4951	174	5290
	3	8	1473	33	1514
	4	28	2010	24	2062
	5	173	3756	209	4102
	6	64	712	102	878
	7	1	343	5	349
	8	3	673	21	697
	9	2	631	8	641
TOTAL		454	16246	835	17535

FIRE HAZARD RESPONSE AND MITIGATION PLAN

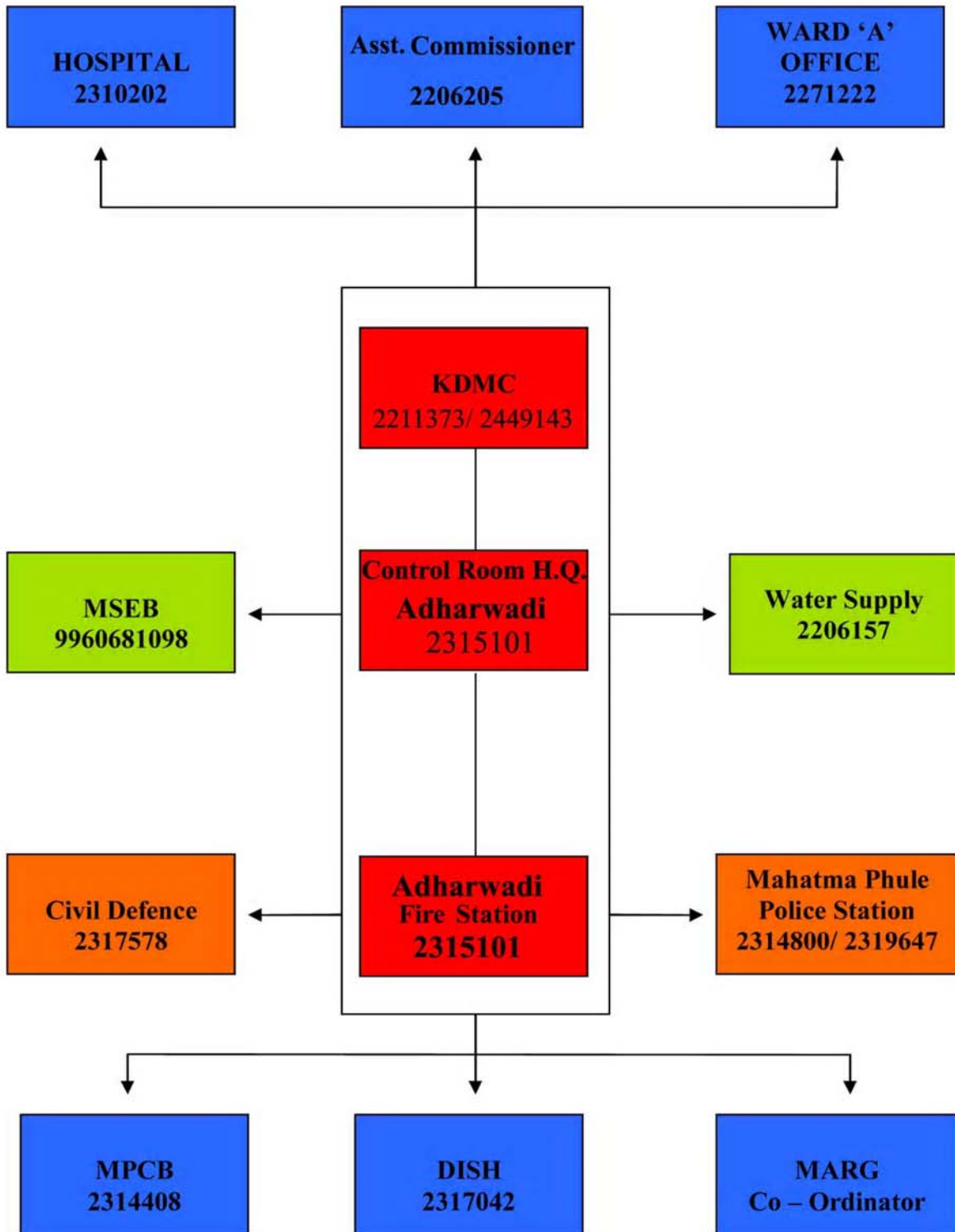


K.D.M.C. "A" WARD AREA MAP

- NOTE:** ROADS ——— Zuggi Area. XXX
- ELECTION WARD BOUNDARY SHOWN AS
- ADMINISTRATIVE WARD (A) BOUNDARY SHOWN AS

- Fire Station Existing ●
- Fire Station Proposed ●

COMMUNICATION CHART



FIRE HAZARD RESPONSE AND MITIGATION PLAN

Factory Fact Sheets

NAME OF THE FACTORY : M/s. Century Chemicals.
ADDRESS : P. B. No. 22, Murbad Road, Kalyan.
LOCATION : Shahad.
PIN CODE : 421 103.

CONTACT PERSONS

NAME	Mr. S A Luthra	Mr. R C Sitani	Mr. S. K.Mishra	Mr. Babji Choudhary
OFFICE TEL. NO.	2546570 Ext. 366	2546570 Ext. 334	2546570 Ext.390	2546570 Ext.390
DIRECT TEL. NO.	2320364	2546570. Ext.323 2552558	9422386446	-
RESIDENCE TEL. NO.	2546570 Ext. – 313 with operator	546570 – Ext. 317 with operator	2546538	2546570 Ext. 413

DETAILS OF NEIGHBORING RESPONDING FACTORIES:

NAME OF THE FACTORY	N. R. C. Ltd.	N P L
CONTACT PERSON	Mr. V. S. Supanekar	Mr. Uday Shetty
ADDRESS	Mohane Kalyan	Mohane Kalyan
FACTORY TEL. NO.	2270311- Ext-3289	25923651 – Mulund
MOBILE NO.	2270311 – 15	2270094 / 2270671

CHEMICALS USED/ STORED

NAME OF CHEMICAL	: Chlorine	Hydrogen	HCl
QUANTITY STORED	: 120 Tons	140 M ³	200 Tons
MODE OF STORAGE	: Liquefied Chlorine - under pressure	Under pressure	Normal pressure
TYPE OF STORAGE	: Horizontal Storage Tank	Hydrogen Holder	FRP & M. S. Tanks

DETAILS OF EQUIPMENTS AVAILABLE

1.	FIRE HYDRANT SYSTEM	Yes.
2.	AMBULANCE	One.
3.	AMBULANCE ROOM	Attached with Occupational Health Centre
4.	NO. OF SCBA	6
5.	NO. OF ELSA	4
6.	HYDRANT SYSTEM	
7.	OTHER RESPIRATORS (canister/ air line aspirator)	1
8.	ANTIDOTES	No antidotes for Chlorine.

FIRE HAZARD RESPONSE AND MITIGATION PLAN

DETAILS OF MEDICAL FACILITIES IN THE AREA

1.	HOSPITAL. (No. of beds/ staff facilities/ specialization).	Century Rayon Hospital , Bed (65), Doctors-30 I.C.U. Unit Operation Theatre, ENT Dental, Sonography.
2.	DOCTORS TELEPHONE NOS.	Dr. P. G. Joshi Tel. (0251)2546570 – Ext. O. 427 / 2546562. Res. 2546570 -Ext – 457. Dr. Anolkar – MS. Century Rayon Hospital, Tel : 2546562 Res. 2548170
3.	PARAMEDICAL FACILITIES.	Physio Therapy, Pathology, E.C.G., X - Ray etc.
4.	ANTIDOTES AVAILABLE IN THE HOSPITAL.	No antidotes for Chlorine.

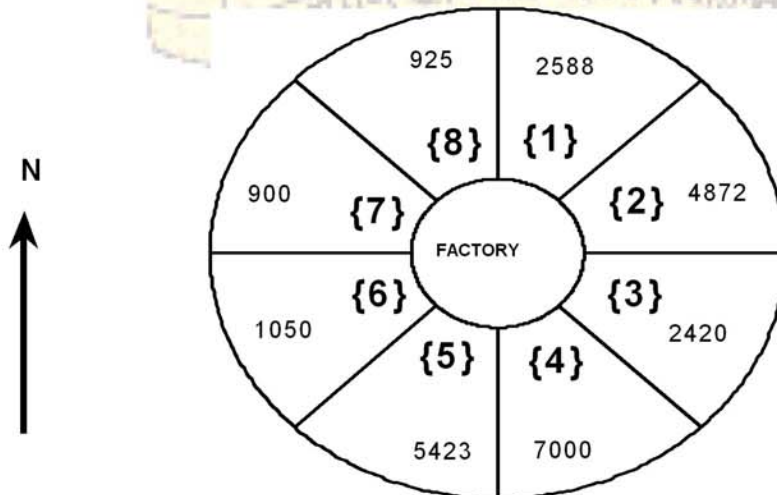
OTHER RESPONSE FACILITIES

1.	FIREMEN DETAILS.	In every shift fire fighters are available with security department. Details of names are displayed in emergency control centre with contact telephone numbers
2.	EMERGENCY TRANSPORT FACILITY.	Transport is available in each shift. Ambulance can be obtained from occupational health centre.
3.	PUBLIC ADDRESS SYSTEM.	Public address system is installed at Emergency Control Room at Gate Office and in the Control Room of Membrane Cell Plant.
4.	ANTIDOTES	Nil

	FIRST OFF-SITE RESPONDER	TELEPHONE NO.	ADDRESS
1.	NEAREST FIRE STATION	2315101 / 2310155	Kalyan Fire Bridge
2.	NEAREST POLICE STATION	2313427 2314800	Police Control Room Mahatma Phule Police Room

OTHER INFORMATION

1.	NEARBY SENSITIVE POPULATION AREAS	Like Krishna Puram, Shree Krishna Puram and other residential areas. Shahad Railway Station, Century Rayon Factory and it's colony. (High Way, Hospitals, Railway Station, School etc.)
2.	POPULATION WITHIN 1 km. RADIUS/ 2 km RADIUS	



WORST CASE SCENARIO	Cl ₂ spill. Affected area 10 Km down wind, cone angle 20°.
---------------------	---

FIRE HAZARD RESPONSE AND MITIGATION PLAN

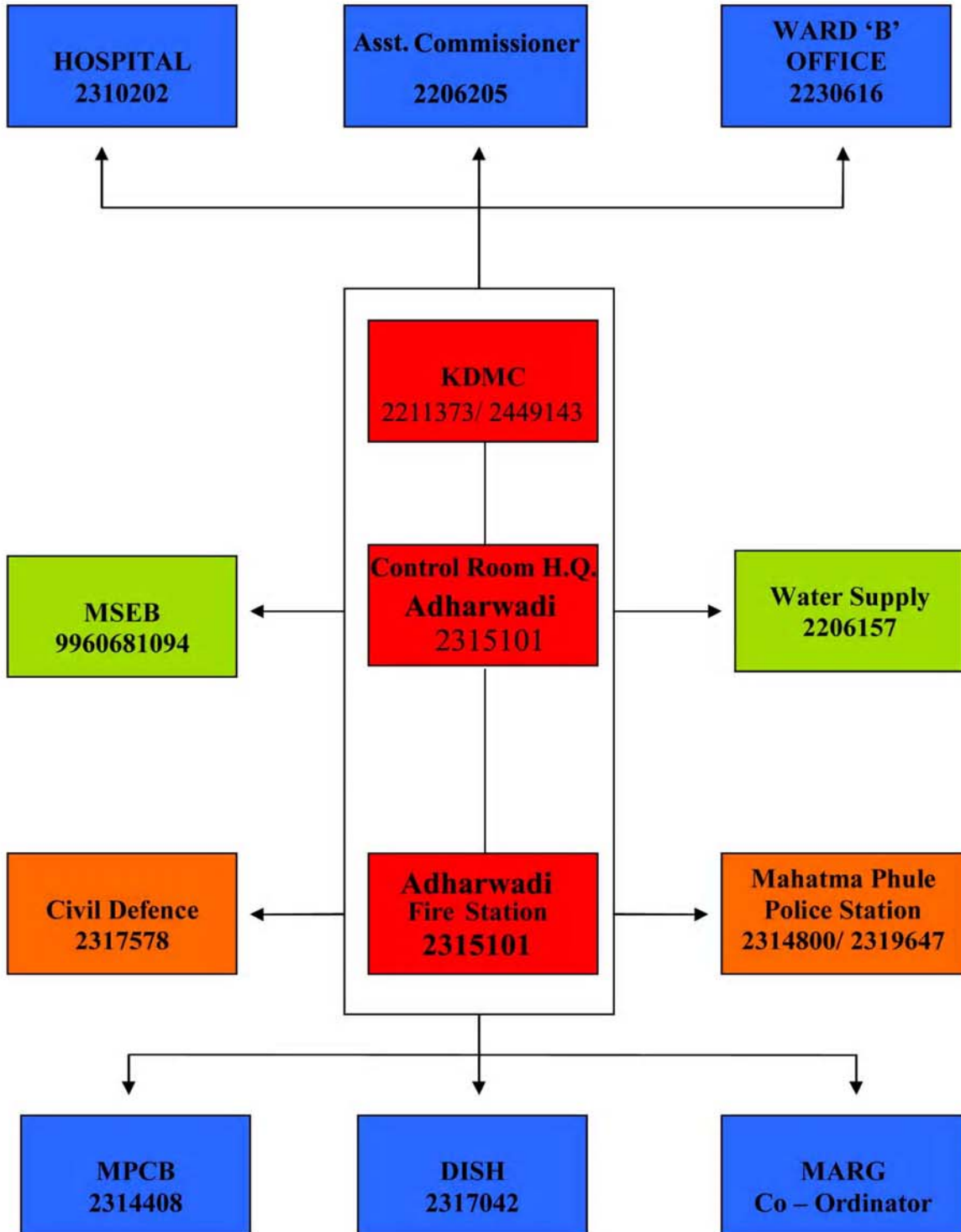
2.3 WARD NO. – B

Jurisdiction.	:	Umbarde, Sapad, Gouripada, Rambag & Syndicate area, Kalyan West , Ulhas River, Murbad Road, Santoshi Mata Road, Kala Talao, Kharpada, Adharwadi Chouk, Rambangn Nala.
Area.	:	15.23 sq. km.
Population.	:	1,35,340 (as per 2001 censuses).
Fire station.	:	There is no fire station at “B Ward” Adharwadi fire station provides service this area.
Proposed fire station.	:	1. Chikanghar Fire Station. Property No. 189, Survey No. 30 (part), Survey No. 31 (part) Survey No. 3164, area 4100 sq. m. 2. Barave Fire Station. Property No. 132, Survey No. 58 (part), area 4200 sq. m.
Plot reserved for fire station.	:	New Kalyan development, high rise buildings development in large scale coming up, trades, malls, cinema theaters, Creek – Gandhari Kolivali area flood prone.
Dilapidated Buildings.	:	19
Unsafe Buildings.	:	4
Major Bridges.	:	National Highway NH – 222. The major arterials roads are Murbad Road, Santoshi Mata Road. The Kalyan Shil Road and Murbad Roads have been identified as one of the most accident prone areas, Godrej Hills.

BUILDINGS

TYPE	ZONE	MIX	RESIDENTIAL	NON-RESIDENTIAL	TOTAL
	1	157	1157	291	1605
	2	230	1281	152	1663
	3	35	713	46	752
	5	71	1998	95	2164
	6	476	4	13	493
	7	13	410	11	434
	8	170	1370	67	1607
	41	137	6419	178	6734
	42	25	434	23	482
TOTAL		1314	13744	876	15934

COMMUNICATION CHART



FIRE HAZARD RESPONSE AND MITIGATION PLAN

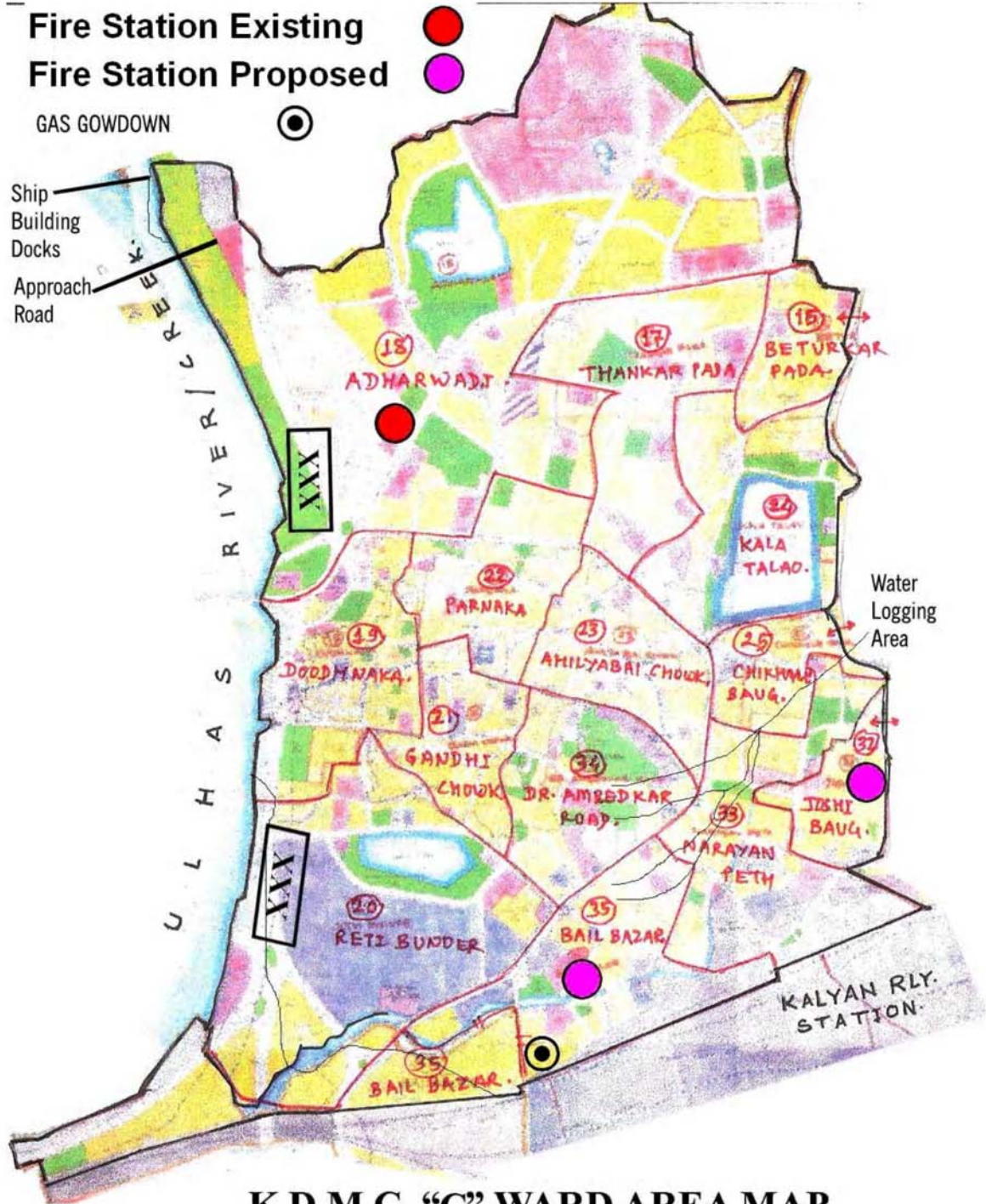
2.4 WARD NO. – C

Jurisdiction.	:	Dudhnaka, Parnaka, part area of old Kalyan Municipal Council Limits.
Area.	:	4.25 sq. km.
Population.	:	1,29,128 (as per 2001 censuses).
Fire Station.	:	Adharwadi Fire Station.
Proposed Fire Station.	:	Plot reserved for fire station. Fire station : Property No. 113, Survey No. 280 (part), Survey No. 3436 (part), Area 1800 sq. m.
Dilapidated Buildings.	:	3
Unsafe Buildings.	:	92
	:	Kalyan Railway Junction, State Transport Depot, Station Road, Mahatma Phule Chauk, Joshi Baug, Narayan Peth, Chitale Baug, Kala Talao, Beturkar Pada, Adharwadi Chauk, Kalia Creek, Patri Pool.
	:	Mix Community, Riot Prone Zone, Bajar Peth Trade.
	:	Flood prone area due to creek and Jari Mari Nala.
	:	Temporary Structures such as Exhibition Halls, Circus tent, Pendants erected for religious activities.
	:	Kalyan Bunder – Ship Building Docks, Cattle Sheds in large numbers.
	:	Office of major Government and Semi Government Organisations- KDMC, Tahashil, Police, BDO, DISH, BSNL, Court, MPCB.
	:	National Highway NH 222. The major arterials roads in city are Murbad road, Shivaji Path, Santoshi Mata Road, Agra Road. The Kalyan Shil Road and Murbad roads have been identified as one of the most accident prone areas.
Pilgrims Area (Floating population)	:	Durgadi Fort
Major Bridges.	:	Patripul 1 & 2 and Bhivandi 1 & 2.

BUILDINGS

TYPE	ZONE	MIX	RESIDENTIAL	NON-RESIDENTIAL	TOTAL
	1	640	3212	982	4834
	2	556	5661	573	6790
	3	85	1060	189	1334
	4	8	138	21	167
	1a	111	1437	72	1620
	2a	16	133	3	152
	3a	13	623	15	651
TOTAL		1429	12264	1855	15548

FIRE HAZARD RESPONSE AND MITIGATION PLAN



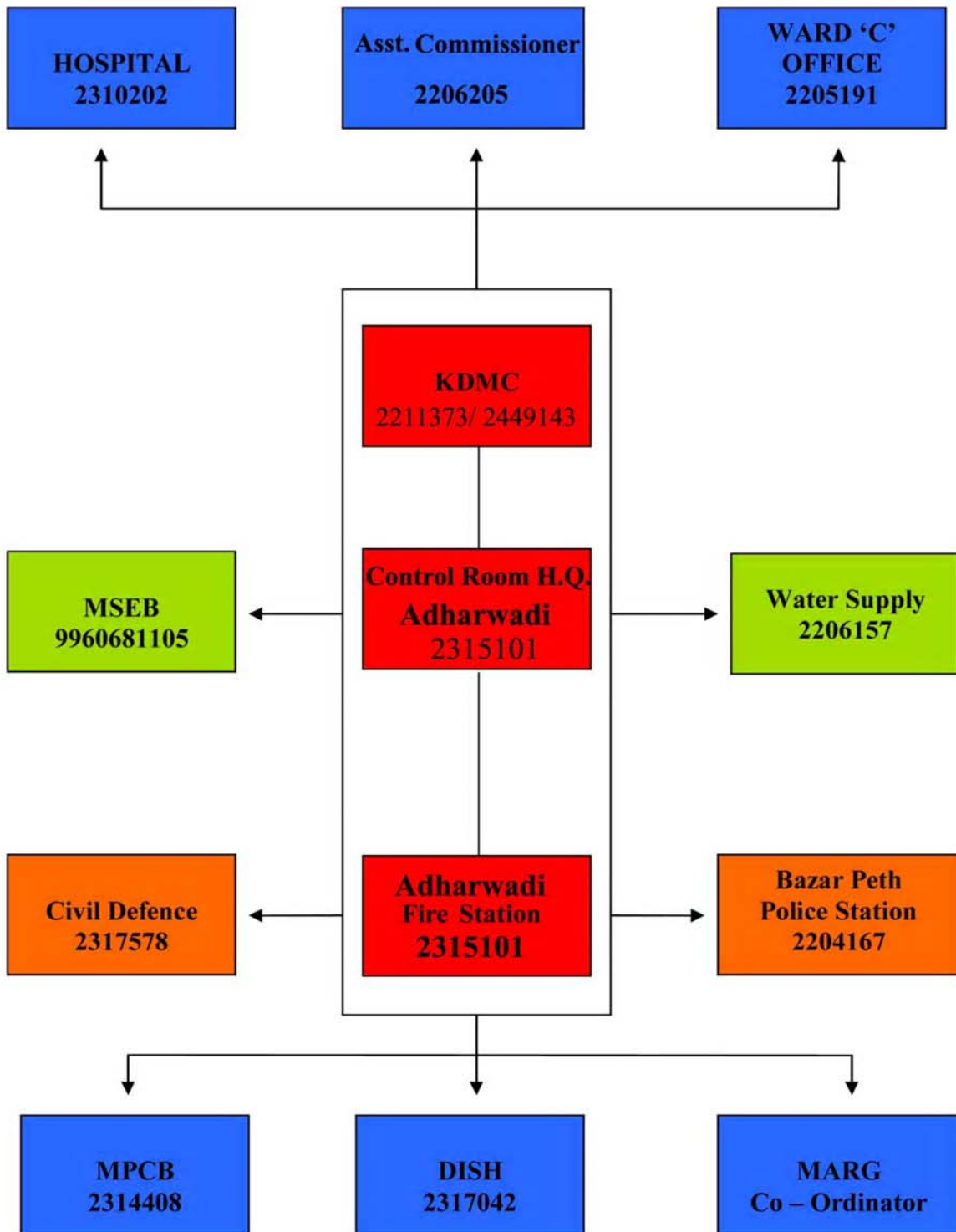
K.D.M.C. "C" WARD AREA MAP

NOTE: ROADS Zuggi Area.

NOT TO SCALE ELECTION WARD BOUNDARY SHOWN AS

ADMINISTRATIVE WARD (C) BOUNDARY SHOWN AS

COMMUNICATION CHART



FIRE HAZARD RESPONSE AND MITIGATION PLAN

RESOURCES AVAILABLE AT ADHARWADI FIRE BRIGADE

SR. NO.	ITEM	DESCRIPTION	NUMBER
1.	Vehicles.	Water Tender.	2
		Foam Tender.	-
		Rescue Van.	1
		Ambulance.	1
2.	Public Announcement.	Mega Phone.	-
		Wireless Static.	Yes
3.	PPE's.	Life Jackets.	25
		Life Buy.	15
		Asbestos Suit.	2
		Aluminum Suit.	-
		SCBA.	10
4.	Fire Fighting Equipment.	Foam Compound (20 Ltrs Jerry Cans).	1000ltrs.
		Carbon Dioxide Extinguisher (2.5 - 25 Kgs).	15
		DCP Extinguisher (10 Kg).	10
		Delivery Hoses.	55
		Portable Pumps.	1
5.	Emergency Power.	Generators.	6
6.	Lighting System.	Attached To Generators.	6
7.	Special Purpose Equipment And Rescue Related Equipment.	Bolt Cutter.	6
		Chain Saw Cutter.	10
		Metal Cutter.	10
		Extension Ladder (15 m).	4
		Rescue Extension Ladder.	-
8.	Ladders.	Hook Ladder.	-
9.	Data Information System At Disposal.	Maintained in prescribed registers.	Yes

MANPOWER

Office Address: Fire Station, Head Quarter, Adharwadi, Opp. Durgadi Fort, Kalyan (W).

S. N.	NAME	DESIGNATION	CONTACT NO.	MOBILE
1.	Shri. Dilip N. Gund.	Dy. Chief Fire Officer.	2315101	9820452466
2.	Shri. Suhas G. Chavan.	Sub – Officer.	2310155	9987408716
3.	Shri. Damodhar C. Wangad.	Sub – Officer.	2310155	9702850194
4.	Shri. Sudhakar R. Kulkarni.	Sub – Officer.	2310101	9820911623
5.	Shri. Dilip M. Palav.	Sub – Officer.	2315101	9323290445
6.	Shri. Namdeo L. Chaudhari.	Sub – Officer.	2310155	9920305281

FIRE HAZARD RESPONSE AND MITIGATION PLAN

Office Address: Fire Station, Adharwadi, Opp. Durgadi Fort, Kalyan (W).

SR. NO.	NAME	DESIGNATION
1.	Shri. Suresh B. Shinde. CONTACT NO. : 2315101 9004345101.	Sub-Officer.
2.	Shri. Raghunath S. Shinde.	Leading Fireman/Rescuer.
3.	Shri. Yashwant G. Pawar.	Leading Fireman/Rescuer.
4.	Shri. Nakul M. Karbhari.	Leading Fireman/Rescuer.
5.	Shri. Sunil G. More.	Leading Fireman/Rescuer.
6.	Shri. Laxman V. Patil.	Driver/ Operator.
7.	Shri. Ashok J. Suryavanshi.	Driver/ Operator.
8.	Shri. Balkrishna S. Sirsat.	Driver/ Operator.
9.	Shri. Mastan G. Baraf .	Driver.
10.	Shri. Suraj Kumar R. Yadav.	Driver.
11.	Shri. Ram Y. Kharade.	Driver.
12.	Shri. Bhausaheb V. Pagar.	Driver.
13.	Shri. Ravindar B. Isame.	Driver.
14.	Shri. John S. Moor.	Driver.
15.	Shri. Sudhakar Baviskar.	Driver.
16.	Shri. Harishchandra N. Bhondiwale.	Driver.
17.	Shri. Bhiva V. Karbhari.	Fireman/ Rescuer.
18.	Shri. Shantaram K. Patil.	Fireman/ Rescuer.
19.	Shri. Kaka S. Patil.	Fireman/ Rescuer.
20.	Shri. Annant V. Shelar.	Fireman/ Rescuer.
21.	Shri. Pramod K. Kolte.	Fireman/ Rescuer.
22.	Shri. Satish V. Mankame.	Fireman/ Rescuer.
23.	Shri. Sanjay G. Mhaske.	Fireman/ Rescuer.
24.	Shri. Rajaram N. Gaikar.	Fireman/ Rescuer.
25.	Shri. Vinit V. Katkar.	Fireman/ Rescuer.
26.	Shri. Kashev K. Pagi.	Fireman/ Rescuer.
27.	Shri. Rouf H. Shamle.	Fireman/ Rescuer.
28.	Shri. Nandukumar R. Shendkar.	Fireman/ Rescuer.
29.	Shri. Dadasaheb C. Yadav.	Fireman/ Rescuer.
30.	Shri. Pandit U. Karbhari.	Fireman/ Rescuer.
31.	Shri. Dasharath K Gaikwad.	Fireman/ Rescuer.
32.	Shri. Ratilal A. Koli.	Fireman/ Rescuer.
33.	Shri. Jagan G Amle.	Fireman/ Rescuer.
34.	Shri. Sanjay G. Ambokar.	Fireman/ Rescuer.
35.	Shri. Suhas P. Kulkarni.	Fireman/ Rescuer.
36.	Shri. Narayan L. Jadhav.	Fireman/ Rescuer.

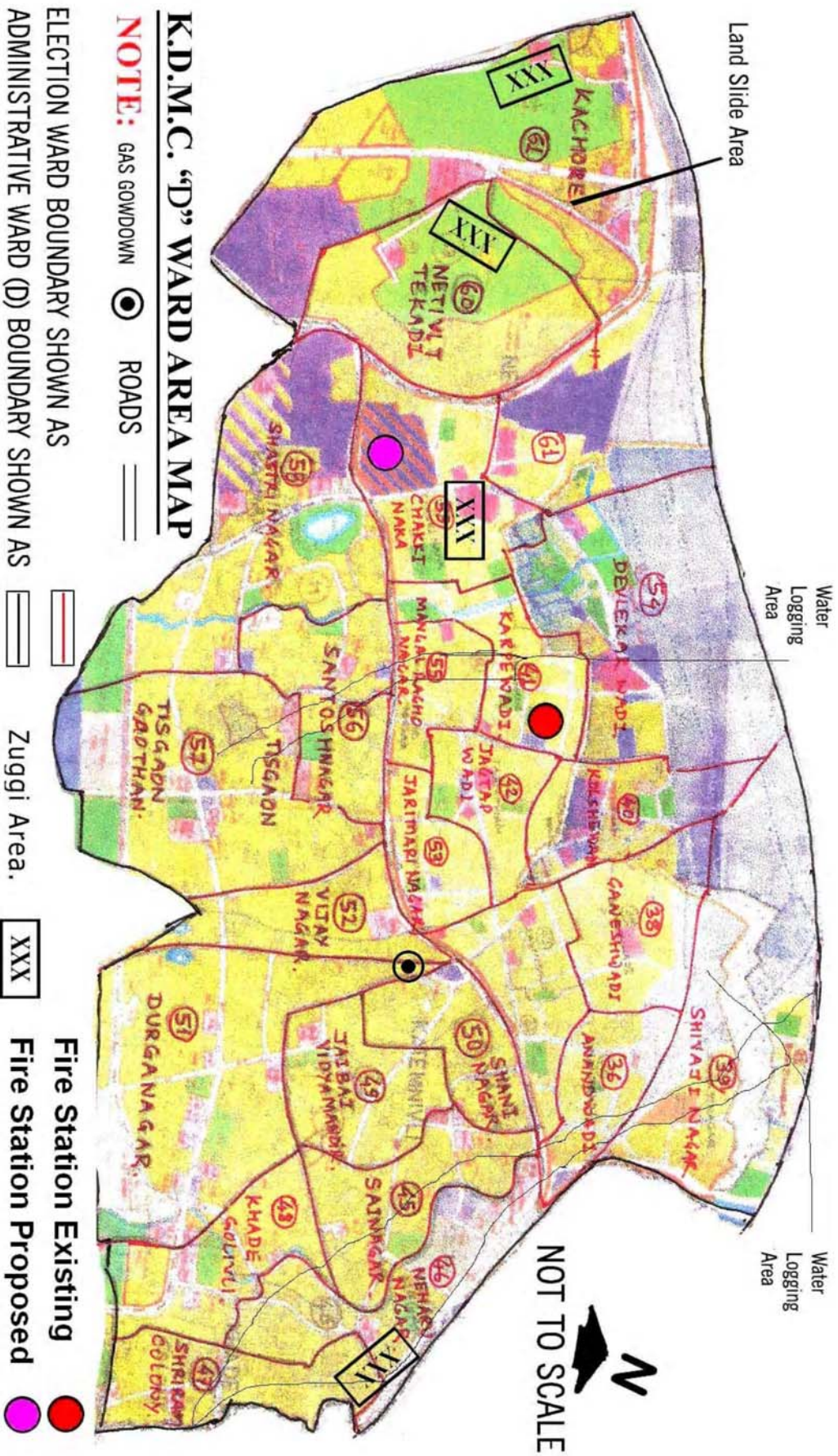
2.5 WARD NO. – D

Jurisdiction.	:	Kalyan (E), Kolsewadi, Katemanivli, Tisgaon, Khade Golavli,
Area.	:	7.45 sq. km.
Population.	:	2,46,449 (as per 2001 censuses).
Fire station.	:	D – Ward Fire Station.
Proposed Fire Station.	:	1. Netivali fire station, Property No. 484, Survey No. 1 (part), Survey No. 2 (part). Plot Reserved for Fire Station. Area 3600 sq. m.
Dilapidated buildings.	:	0
Unsafe buildings.	:	42
	:	Metro Junction Mall, Chawls Conjusted Area, High rise building coming up.
	:	Topography affects response time, Kalyan Local Shed, Railway Yard and Future Terminal Station of North and South.
Flood Prone Area.	:	Khade Golawali, Waldhuni.
Landslides.	:	Netivali.
	:	The major arterials roads is Puna Link Road. The Kalyan Shil Road and Murbad roads have been identified as one of the most accident prone areas.
Under pass.	:	Kolshewadi 2 nos.
Pilgrims Area (Floating population)	:	Tisai devi Mandir
Major Bridges.	:	Valdhuni.

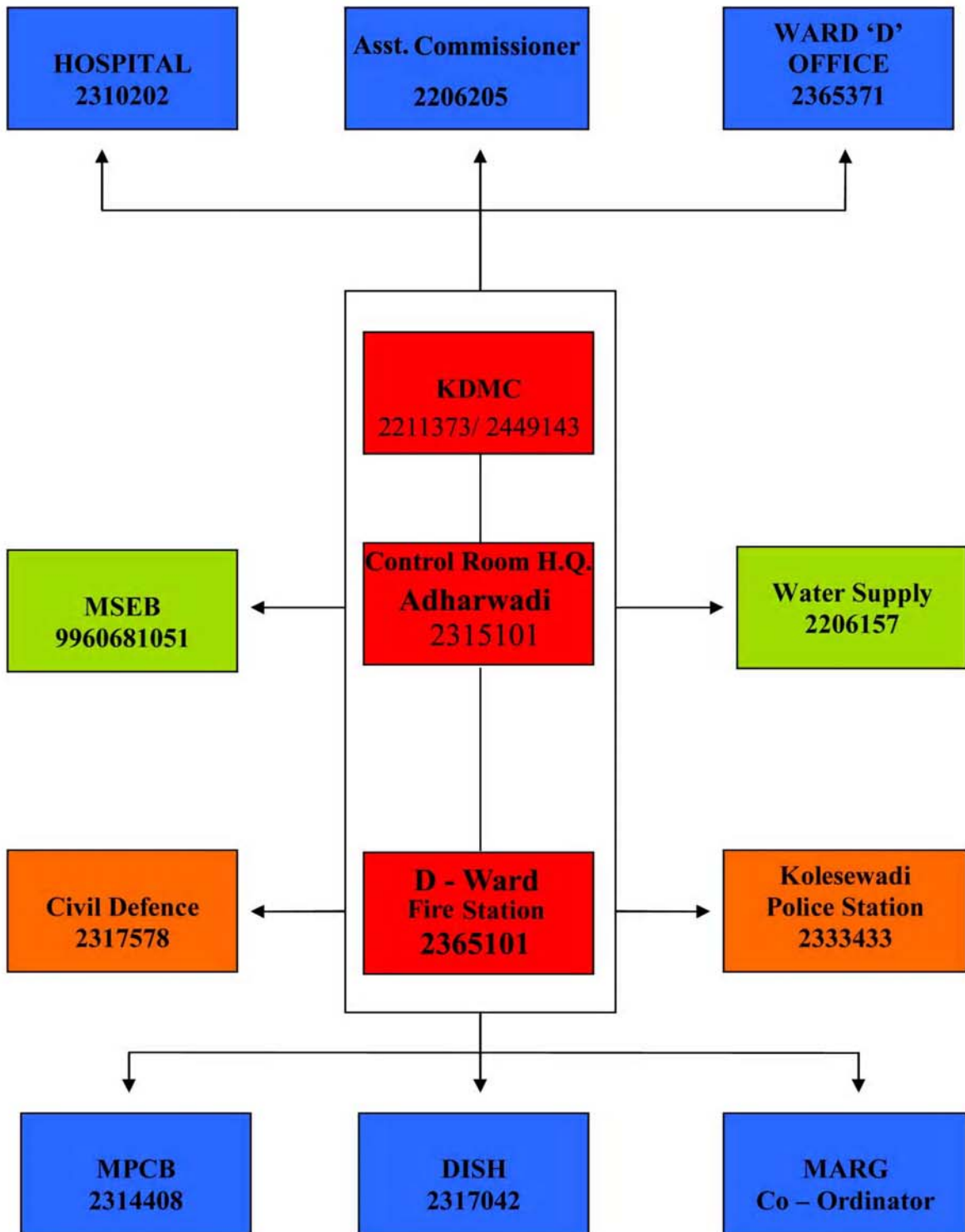
BUILDINGS

TYPE	ZONE	MIX	RESIDENTIAL	NON-RESIDENTIAL	TOTAL
	1	10	60	10	80
	2	76	1655	153	1884
	3	20	111	40	171
	4	362	15879	653	16894
	5	738	17323	1167	19228
	6	368	4726	139	5233
	7	37	3816	194	4047
	8	3	1525	80	1608
TOTAL		1614	45095	2436	49154

FIRE HAZARD RESPONSE AND MITIGATION PLAN



COMMUNICATION CHART



FIRE HAZARD RESPONSE AND MITIGATION PLAN

RESOURCES AVAILABLE AT “D – WARD” FIRE BRIGADE

SR. NO.	ITEM	DESCRIPTION	NUMBERS
1.	Vehicles.	Water Tender.	1
		Foam Tender.	–
		Rescue Van.	–
		Ambulance.	–
2.	Public Announcement.	Mega Phone.	–
		Wireless Static.	Yes
3.	PPE's.	Life Jackets.	10
		Life Buy.	5
		Asbestos Suit.	2
		Aluminum Suit.	–
		SCBA.	2
4.	Fire Fighting Equipment.	Foam Compound (20 ltrs jerry cans).	500 Ltrs.
		Carbon Dioxide Extinguisher (2.5 - 25 kgs).	5
		DCP extinguisher (10 Kg).	2
		Delivery Hoses.	15
		Portable Pumps.	1
5.	Emergency Power.	Generators.	1
6.	Lighting System.	Attached To Generators.	–
7.	Special Purpose Equipment And Rescue Related Equipment.	Bolt Cutter.	1
		Chain Shaw Cutter.	2
		Metal Cutter.	1
		Extension Ladder (15 m).	1
		Rescue Extension Ladder.	–
8.	Ladders.	Hook Ladder.	–
9.	Data Information System At Disposal.	Data information is maintained in prescribed registers.	Yes

FIRE HAZARD RESPONSE AND MITIGATION PLAN

MANPOWER

Fire Station: D – Ward Office, Kolsewadi, Kalyan (W).

SR. NO.	NAME	DESIGNATION
1.	Shri. Kailash Babji Wadekar. CONTACT NO.: 2365101 9960802041	Sub-Officer/ Station Incharge.
2.	Shri. Ramesh Rambhau Patil.	Leading Fireman/Rescuer.
3.	Shri. Ravi Halya Govari.	Leading Fireman.
4.	Shri. Dilip Baburao Kothmire.	Leading Fireman.
5.	Shri. Kuttubuddin Gafur Tadv.	Driver.
6.	Shri. Manohar Murlidhar Nikam.	Driver.
7.	Shri. Adinath A. Shinde.	Driver.
8.	Shri. Vasant Krishna Page.	Driver
9.	Shri. Balaram Bhiva Mhatre.	Fireman/ Rescuer.
10.	Shri. Subhash Baburao Bhor.	Fireman/ Rescuer.
11.	Shri. Anand Sayaji Wohal.	Fireman/ Rescuer.
12.	Shri. Sanni Vishnu Bhagare.	Fireman/ Rescuer.
13.	Shri. Savliram Deoram Bhusare	Fireman/ Rescuer.
14.	Shri. Ashwani Arun Patrale.	Fireman/ Rescuer.
15.	Shri. Bandu Yeshwant Sahare.	Fireman/ Rescuer.
16.	Shri. Bhagwan Attaram Patil.	Fireman/ Rescuer.
17.	Shri. Suresh Ladku Gaikar.	Fireman/ Rescuer.
18.	Shri. Sachin Eknath Pawar.	Fireman/ Rescuer.
19.	Shri. Alan De Souza.	Fireman/ Rescuer.
20.	Shri. Pandit Govind Mhatre.	Fireman/ Rescuer.
21.	Shri. Vijay Dhondiba Patil.	Fireman/ Rescuer.
22.	Shri. Jagdish Rangunath Purlkar.	Fireman/ Rescuer.
23.	Shri. Nabab Nadir Tadv.	Fireman/ Rescuer.
24.	Shri. Sanjay Shvaji Sarode.	Fireman/ Rescuer.

FIRE HAZARD RESPONSE AND MITIGATION PLAN

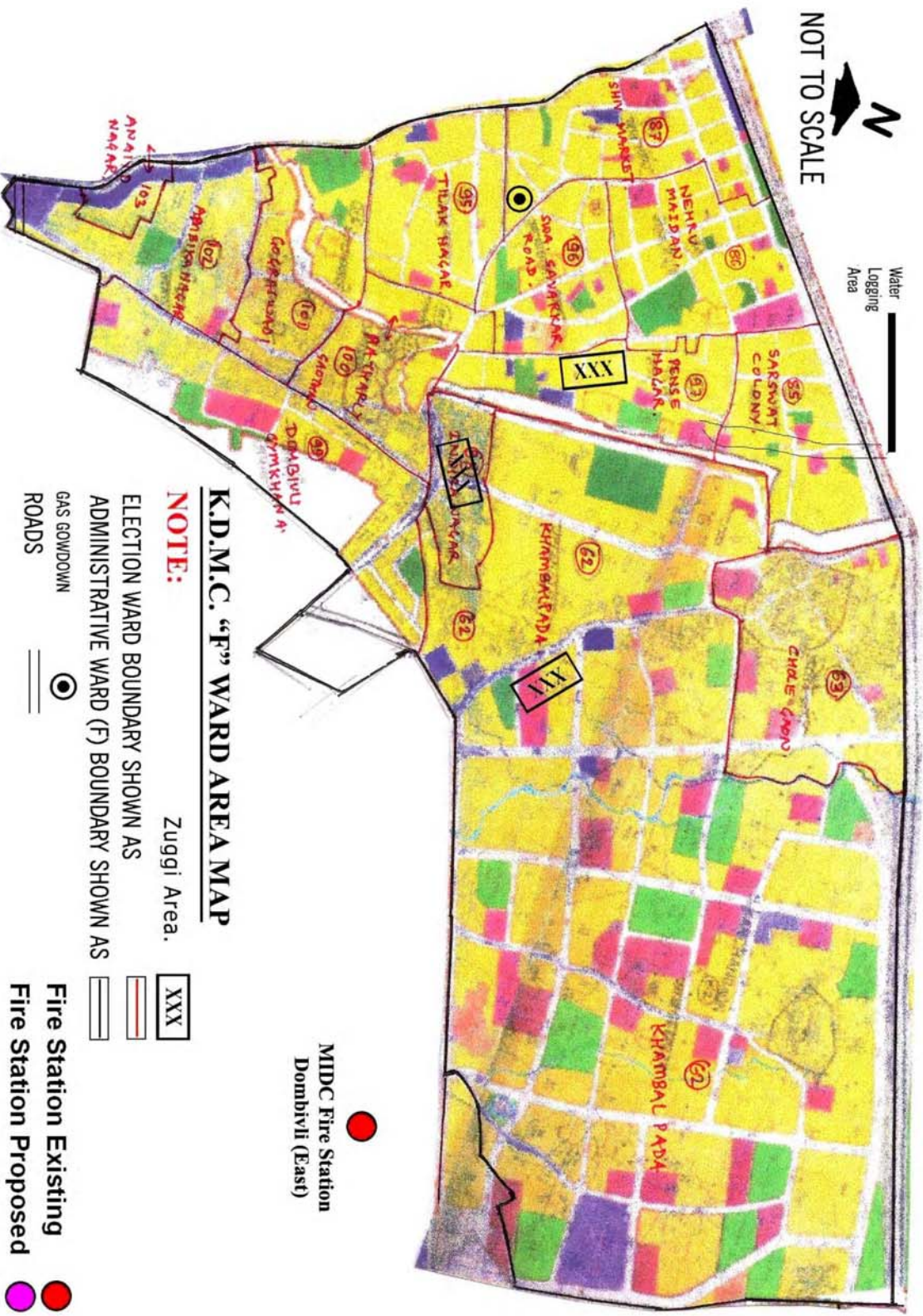
2.6 WARD NO. – F

Jurisdiction.	:	Patharli, Chole, Khambalpada, Pendse Nagar & part area of Old Dombivli council limits, Dombivli East, Thakurli East.
Area.	:	3.92 sq. km.
Population.	:	1,27,774 (as per 2001 censuses).
Fire Station.	:	Fire station: Dombivli MIDC fire station provides service to this area. The Fire station is located outside the KDMC limits.
Dilapidated Buildings.	:	29
Unsafe Buildings.	:	132
	:	Mixed occupancy, trade, thick population density area.
	:	Temporary structures such as Exhibition Halls, Circus tent, Pendants erected for religious activities, Stadium, Auditorium, Multiplex, Ganesh Mandir Sawsthan, High Rise Buildings Coming Up.
	:	The major arterials road is Manpada Road, Kalian Road.
Accident Prone Patches.	:	Gharda Circle, Tharkurli Crossing, Pendharkar College Road.
Pilgrims Area (Floating population)	:	Ganesh Mandir Sansthan
Major Hazardous Units.	:	Major Hazardous Units in MIDC Dombivli 7 Nos.

BUILDINGS

TYPE	ZONE	MIX	RESIDENTIAL	NON-RESIDENTIAL	TOTAL
	1	472	1194	225	1891
	2	191	787	111	1089
	3	67	566	56	689
	4	25	491	200	716
TOTAL		755	3038	592	4385

FIRE HAZARD RESPONSE AND MITIGATION PLAN

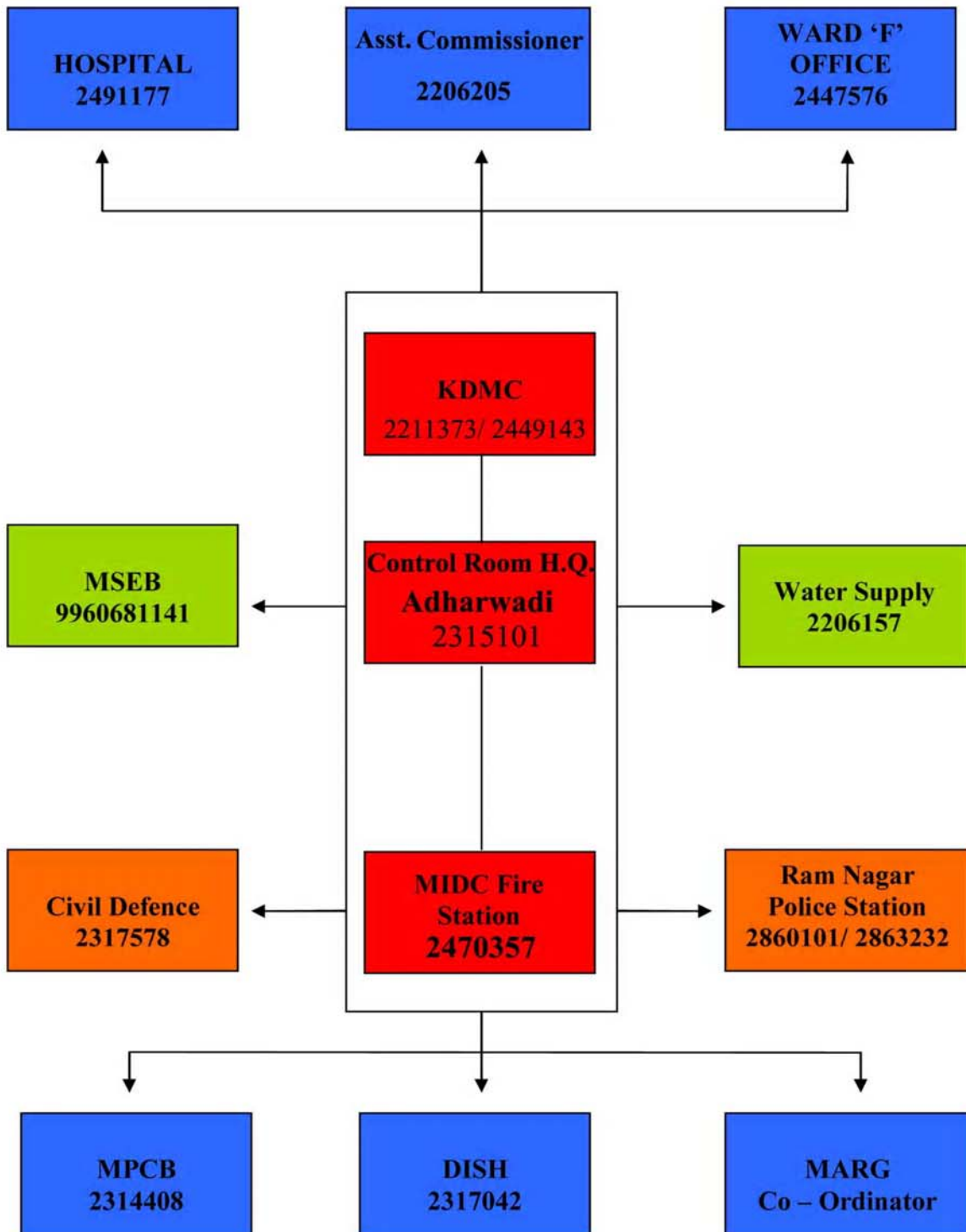


K.D.M.C. "F" WARD AREA MAP

- NOTE:**
- XXX Zuggi Area.
 - ELECTION WARD BOUNDARY SHOWN AS
 - ADMINISTRATIVE WARD (F) BOUNDARY SHOWN AS
 - GAS GOWDOWN
 - ROADS
 - Fire Station Existing
 - Fire Station Proposed

MIDC Fire Station
Dombivli (East)

COMMUNICATION CHART



FIRE HAZARD RESPONSE AND MITIGATION PLAN

RESOURCES AVAILABLE AT DOMBIVALI MIDC FIRE BRIGADE

SR. NO.	ITEM	DESCRIPTION	NUMBERS
1.	Vehicles.	Water Tender.	1
		Foam Tender.	1
		Rescue Van.	0
		Ambulance.	-
2.	Public Announcement.	Mega Phone.	
		Wireless Static.	Yes
3.	PPE's.	Life Jackets.	10
		Life Buoy.	5
		Asbestos Suit.	2
		Aluminum Suit.	-
		SCBA.	2
4.	Fire Fighting Equipment.	Foam Compound (20 Ltrs Jerry Cans).	500 Ltrs.
		Carbon Dioxide Extinguisher (2.5 - 25 Kgs).	5
		DCP Extinguisher (10 Kg).	2
		Delivery Hoses.	15
		Portable Pumps.	1
5.	Emergency Power.	Generators.	2
6.	Lighting System.	Attached To Generators.	-
7.	Special Purpose Equipment And Rescue Related Equipment.	Bolt Cutter.	1
		Chain Saw Cutter.	2
		Metal Cutter	1
		Extension Ladder (15 M).	2
		Rescue Extension Ladder.	-
8.	Ladders.	Hook Ladder.	-
9.	Data Information System At Disposal.	Maintained In Prescribed Registers.	Yes

FIRE HAZARD RESPONSE AND MITIGATION PLAN

MANPOWER

Office address: Fire Station, MIDC, Near State Bank, Dombivli (E).

SR. NO.	NAME	DESIGNATION
1.	Shri. Ramesh B. Khopade. CONTACT NO. : 2470357 9967528458	Sub-Officer/ Station Incharge.
2.	Shri. Purshuttam B. Mohape.	Leading Fireman/ Rescuer.
3.	Shri. Tukaram N. Patil.	Leading Fireman/ Rescuer.
4.	Shri. Sadashiv S Mane.	Leading Fireman/ Rescuer.
5.	Shri. Sanjay N. Chavan.	Leading Fireman/ Rescuer.
6.	Shri. Yashvant K. Ghanghale.	Driver.
7.	Shri. Gajanan R. Karbhari.	Driver.
8.	Shri. Baliram G. Patil.	Driver.
9.	Shri. Sambhaji R. Sawant.	Driver.
10.	Shri. Manik R. Aher.	Fireman/Rescuer.
11.	Shri. Ragunath A. Chaudhari.	Fireman/Rescuer.
12.	Shri. Balu Babu Govari.	Fireman/Rescuer.
13.	Shri. Balu Ananda Bhangе.	Fireman/Rescuer.
14.	Shri. Sadu Bhiva Pagi.	Fireman/Rescuer.
15.	Shri. Maruti Khilari.	Fireman/Rescuer.
16.	Shri. Annant D. Rane.	Fireman/Rescuer.
17.	Shri. Bhalchandra L. Waghare.	Fireman/Rescuer.
18.	Shri. Gopal Thakore.	Fireman/Rescuer.
19.	Shri. Vinayak Lokhande.	Fireman/Rescuer.
20.	Shri. Dattaprasad R. Rane.	Fireman/Rescuer.
21.	Shri. Santosh V. More.	Fireman/Rescuer.
22.	Shri. Ghansham B. Gosavi.	Fireman/Rescuer.
23.	Shri. Vasant Mudliar.	Fireman/Rescuer.
24.	Shri. Gyanba Patil.	Fireman/Rescuer.
25.	Shri. Mustak Makandar.	Fireman/Rescuer.
26.	Shri. Rajesh R. Bhagat.	Fireman/Rescuer.
27.	Shri. Sushil Deshpande.	Fireman/Rescuer.

FIRE HAZARD RESPONSE AND MITIGATION PLAN

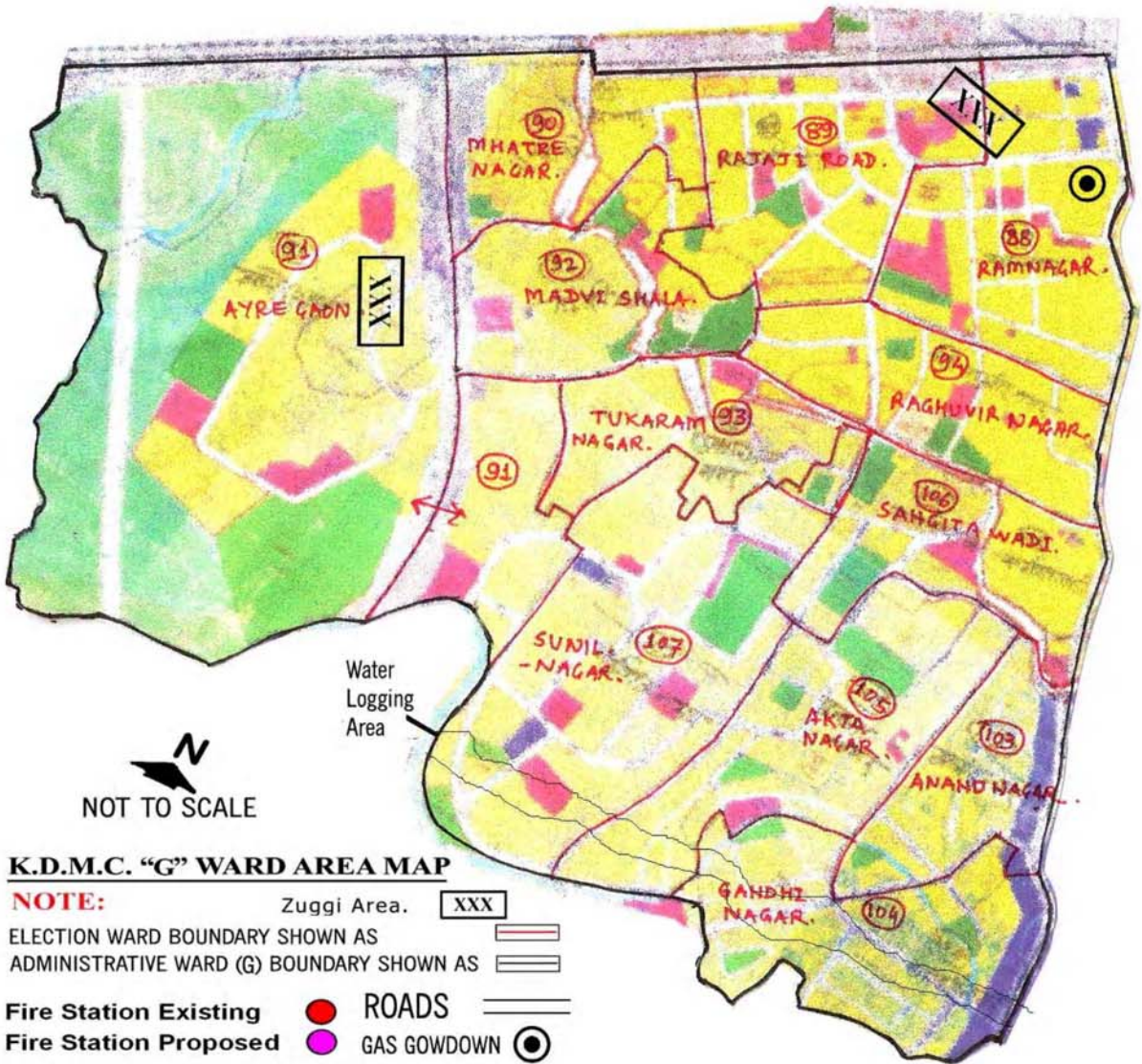
2.7 WARD NO. – G

Jurisdiction	: Ayare, Ramchandra Nager, Gandhi Nagar & part area of old municipal council Limits. Dombivli East.
Area	: 1.57 sq.km.
Population	: 1,17,114 (as per 2001 censuses)
Fire Station	: Fire station There is no fire station at “G – Ward” Dombivli MIDC fire station provides service this area.
Proposed Fire Station	: Plot reserved for fire station. 1. Fire Station. Property No. 64, Survey No. 8396 (part), Survey No. 8419 (part), Survey No. 8403 (part), Survey No. 8404 (part). Area 1000 sq. m.
Dilapidated Buildings	: 30
Unsafe Buildings	: 18
Accident Prone Patches	: Manpada Road, Creek, Sunil Nagar.
Major Hazardous Units	: Mixed occupancy, high rise buildings coming up.
Major Bridges	: Under Pass Kopar, Ayre.
Flood Prone Area	: Ghandhinagar Nala.

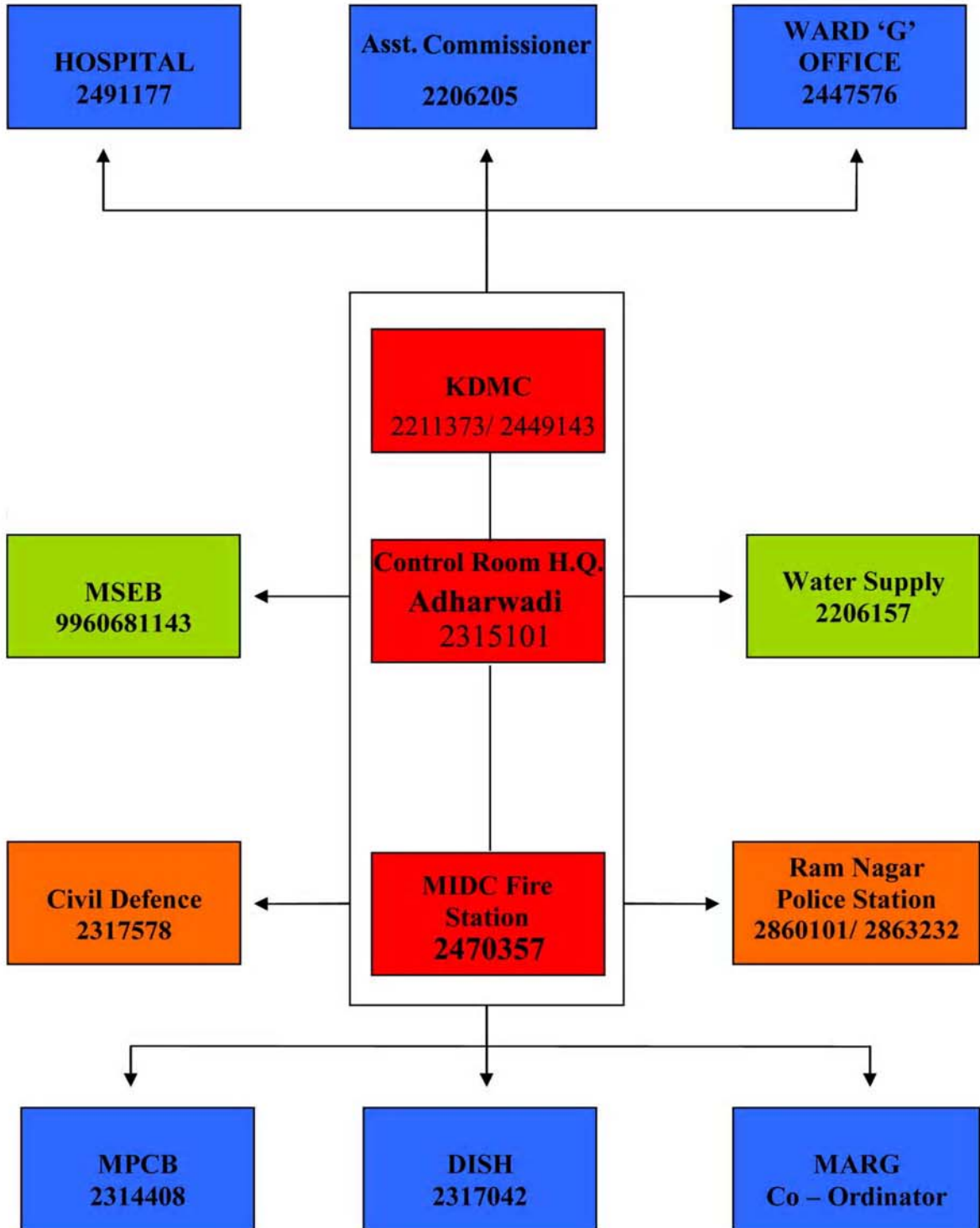
BUILDINGS

TYPE	ZONE	MIX	RESIDENTIAL	NON-RESIDENTIAL	TOTAL
	1	433	631	162	1226
	2	145	333	31	509
	3	191	1476	54	1721
TOTAL		769	2440	247	3456

FIRE HAZARD RESPONSE AND MITIGATION PLAN



COMMUNICATION CHART



FIRE HAZARD RESPONSE AND MITIGATION PLAN

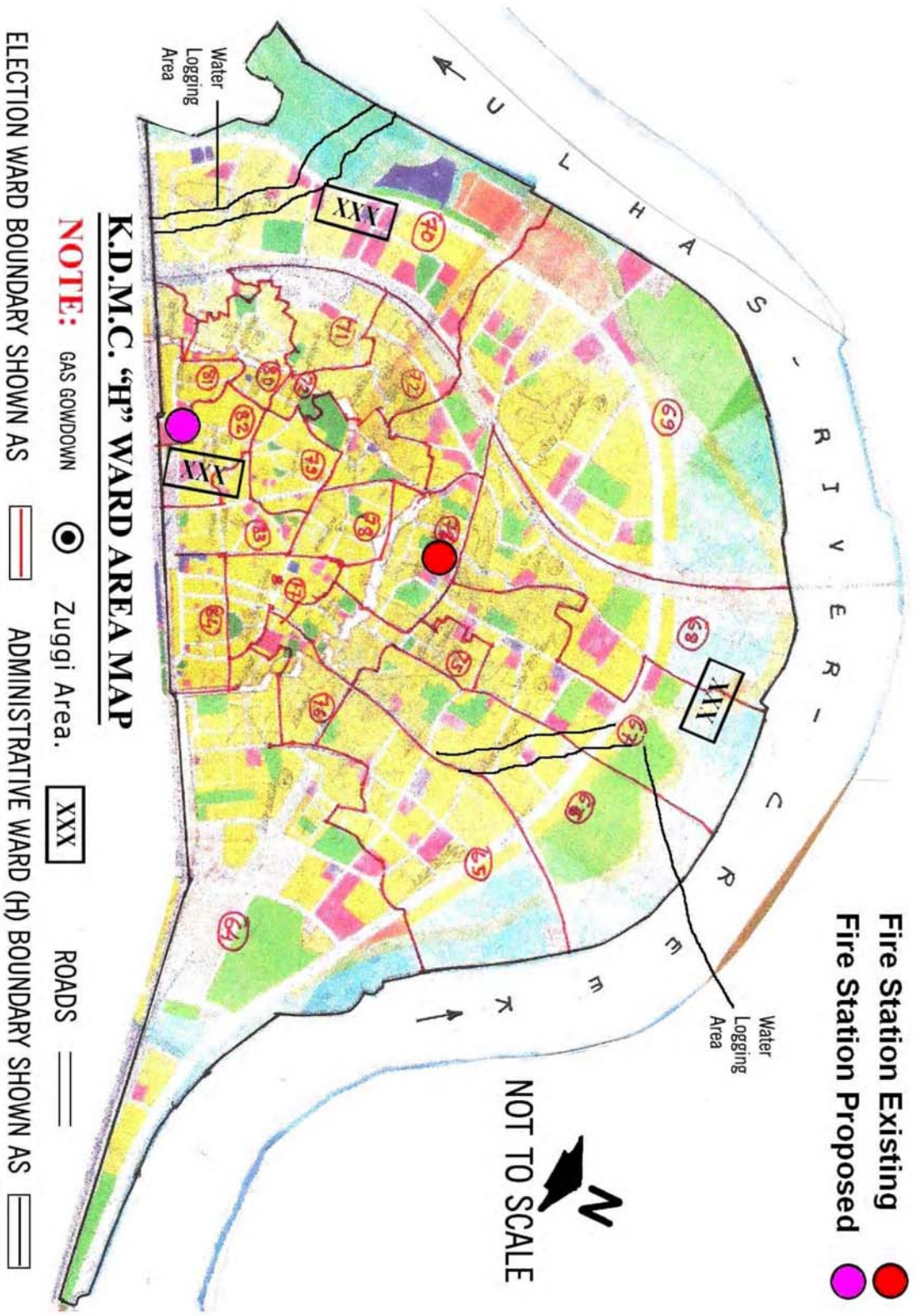
2.8 WARD NO. – H

Jurisdiction	:	Dombivili (West), Kopar, Mothagaon Thakurli, Shivaji Nagar, Maharashtra Kumbhar Khan Pada & West Side of Ex. Municipal Limits.
Area	:	6.43 sq. km.
Population	:	2,00,865 (as per 2001 censuses).
Fire Station	:	Plot reserved for fire station. 1. Fire station, Property No. 13 Survey No. 4048 (part), Survey No. 4035 (part), Survey No. 4037 (part), Survey No. 4040 (part), Survey No. 4039 (part) Survey No. 4018, Area 3800 sq. m.
Proposed Fire Station	:	Divas Vasai Railway and Central Thane – Kalyan Railway line, Creek.
Flood	:	32
Dilapated Buildings	:	33
Unsafe Buildings	:	The major arterials road is Gupte Road, Creek, flood prone area.
Accident Prone Patches	:	Dombivli Bridge.
Major Hazardous Units	:	Old Dombivli.
Major Bridges	:	ROB Dombivli.

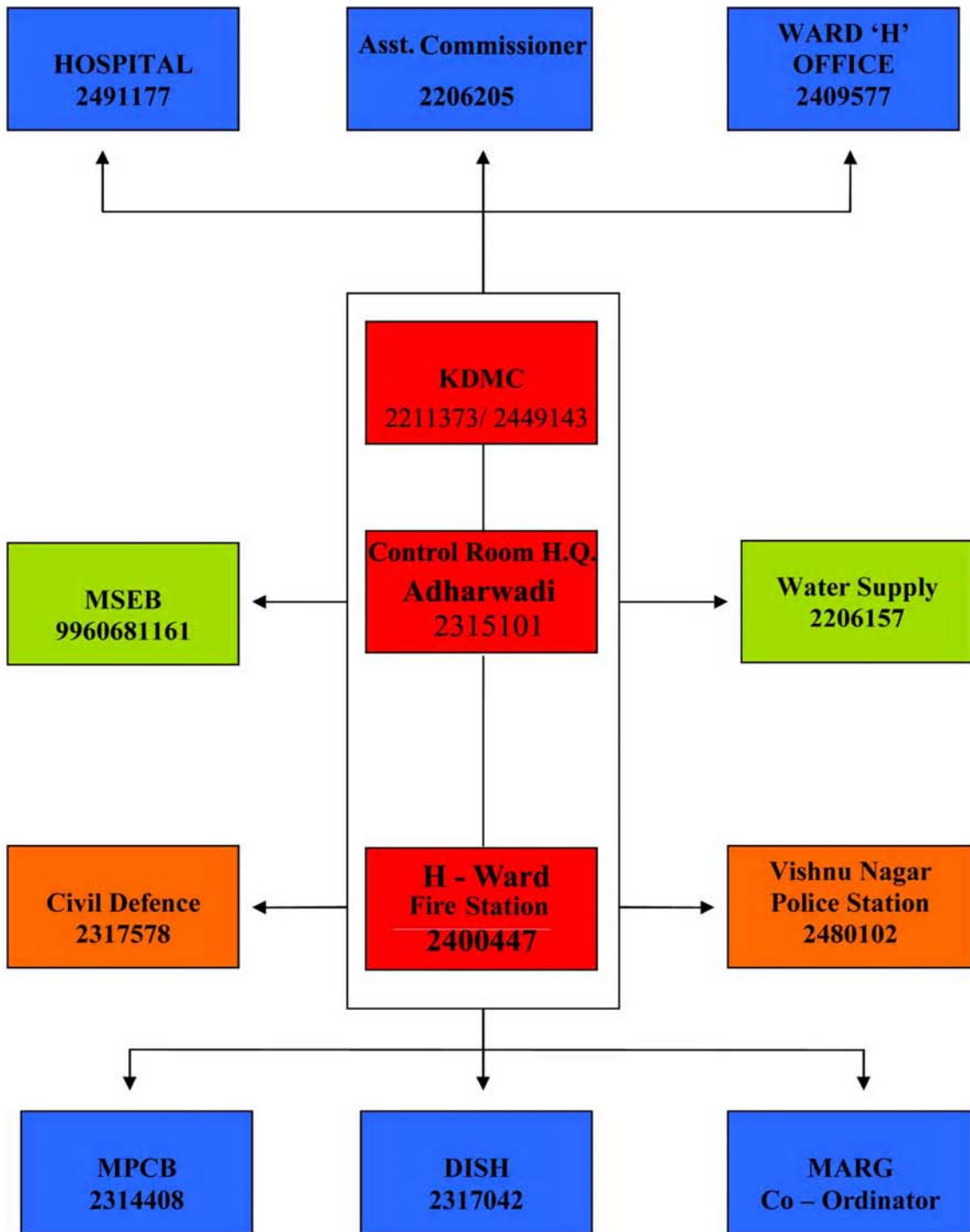
BUILDINGS

TYPE	ZONE	MIX	RESIDENTIAL	NON-RESIDENTIAL	TOTAL
	2	0	2	1	3
	3	14	1029	15	1058
	4	1	2	0	3
	5	21	218	4	243
	6	339	5200	188	5727
	7	22	497	18	537
	11	517	1271	233	2021
	12	78	836	29	943
TOTAL		992	9055	488	10535

FIRE HAZARD RESPONSE AND MITIGATION PLAN



COMMUNICATION CHART



FIRE HAZARD RESPONSE AND MITIGATION PLAN

RESOURCES AVAILABLE AT H – WARD FIRE BRIGADE

SR. NO.	ITEM	DESCRIPTION	NUMBERS
1.	Vehicles.	Water Tender.	1
		Foam Tender.	–
		Rescue Van.	–
		Ambulance.	–
2.	Public Announcement.	Mega Phone.	–
		Wireless Static.	Yes
3.	PPE's.	Life Jackets.	10
		Life Buoy.	5
		Asbestos Suit.	2
		Aluminum Suit.	–
		SCBA.	2
4.	Fire Fighting Equipment.	Foam Compound (20 Ltrs. Jerry Cans).	500 Ltrs.
		Carbon Dioxide Extinguisher (2.5-25 Kgs)	5
		DCP Extinguisher (10 Kg).	2
		Delivery Hoses.	15
		Portable Pumps.	–
5.	Emergency Power.	Generators.	1
6.	Lighting System.	Attached To Generators.	–
7.	Special Purpose Equipment And Rescue Related Equipment.	Bolt Cutter.	1
		Chain Saw Cutter.	2
		Metal Cutter.	1
		Extension Ladder (15 m).	2
		Rescue Extension Ladder.	–
8.	Ladders.	Hook Ladder.	–
9.	Data Information System At Disposal.	Data information is maintained in prescribed registers.	Yes

FIRE HAZARD RESPONSE AND MITIGATION PLAN

MANPOWER

Office Address: Fire station, H – Ward Office, Gupte Road, Dombivli (W).

SR. NO.	NAME	DESIGNATION
1.	Shri. Sunil Balkrishna Bhawe. CONTACT NO. : 2400447 9320061082	Sub-Officer/ Station Incharge.
2.	Shri. Ramchandra Dhondu Mahala.	Leading Fireman/ Rescuer.
3.	Shri. Jeevan Tappa Borade.	Leading Fireman/ Rescuer.
4.	Shri. Annant Raosaheb Jadhav.	Leading Fireman/ Rescuer.
5.	Shri. Tukaram B. Sinalkar.	Driver.
6.	Shri. Amar Kumar Bhagwanji Athawale.	Driver.
7.	Shri. Ravindra Tukaram Shinde.	Driver.
8.	Shri. Anil Keval Thakur.	Driver.
9.	Shri. Dattatrey Jagannth Khirnar.	Fireman/ Rescuer.
10.	Shri. Bharat Kushaba Ghode.	Fireman/ Rescuer.
11.	Shri. Dattatrey Bhivaji Shelke.	Fireman/ Rescuer.
12.	Shri. Parshuram Medehkar.	Fireman/ Rescuer.
13.	Shri. Prakash Vinayak Gaikwad.	Fireman/ Rescuer.
14.	Shri. Ashok Dhivar.	Fireman/ Rescuer.
15.	Shri. Nitin Ramesh Sawant.	Fireman/ Rescuer.
16.	Shri. Shantilal Ragho Aher.	Fireman/ Rescuer.
17.	Shri. Jaiwant Shotole.	Fireman/ Rescuer.
18.	Shri. Nanasaheb Murlidhar Chavan.	Fireman/ Rescuer.
19.	Shri. Ashok Baliram Bagade.	Fireman/ Rescuer.
20.	Shri. Shivaji Damodhar Mhatre.	Fireman/ Rescuer.
21.	Shri. Daji Sambhaji Kadam.	Fireman/ Rescuer.
22.	Shri. Praksh Popat Shinde.	Fireman/ Rescuer.
23.	Shri. Bablu Vyapari.	Fireman/ Rescuer.

FIRE HAZARD RESPONSE AND MITIGATION PLAN

SECTION 3: PLANNING, RESOURCE & MANAGEMENT

1. FIRE STATIONS

S.N.	NAME OF FIRE STATION	Type Of Construction Of Fire Station I.E. RCC/ Metal Shade/ Temporary Shade	ADDRESS	PHONE NO. Code - 0251
1.	Adharwadi.	RCC.	Adharwadi Fire Station H.Q., Opp. Durgadi Fort, Kalyan (W),	2315101 FAX 2310155
2.	D – Ward.	Metal Shed.	D – Ward Office, Kolsewadi, Kalyan (W).	2365101
3.	MIDC.	RCC.	Near State Bank MIDC, Dombivli (E).	2470357
4.	H – Ward.	RCC.	H – Ward Office, Gupte Road, Dombivli (W).	2400447
5.	Murbad Road.	Under Renovation.	Murbad Road, Opp. Chaya Cinema Kalyan (W).	101

2. FIRE AND RESCUE APPLIANCES AVAILABLE IN FIRE STATIONS

S.N.	NAME OF FIRE STATION	NUMBER OF WATER TENDERS	NUMBER OF RESCUE TENDERS	NUMBER OF LADDERS I.E. TTL/ ALP'S	OTHER FIRE OR RESCUE APPLIANCES
1.	Adharwadi.	2+water tanker	1	Nil.	1 Ambulance
2.	D – Ward.	1			
3.	MIDC.	2			
4.	H – Ward.	1			
5.	Murbad road.	–			

3. ADEQUACY OF RESOURCES FOR FIRE AND EMERGENCY SERVICE

S.N.	TYPE OF VEHICLES	EXISTING	FUTURE
1.	Number of Fire Stations.	4	8
2.	Water Tenders.	6	20
3.	Rescue Tenders.	0	2
4.	Advance Emergency Rescue Tenders.	0	2
5.	Flood & Rescue Tenders.	0	2
6.	Hazmat Vans.	0	1
7.	Turn Table Ladders.	0	1
8.	Hydraulic Platforms.	0	2
9.	DCP Tenders.	0	0
10.	Foam Tenders.	0	2
11.	Smoke Blowers.	0	2
12.	Control Post Vans.	0	1

FIRE HAZARD RESPONSE AND MITIGATION PLAN

S.N.	TYPE OF VEHICLES	EXISTING	FUTURE
13.	Water Tankers.	1	8
14.	Ambulances.	1	4
15.	Cars.	0	2
16.	Jeeps.	0	5
17.	High Pressure Portable Pumps.	0	4
18.	Portable Pumps.	3	10
19.	Breathing Apparatus Sets.	10	50
20.	Flood Rescue Boats.	8	5
21.	Life Jackets.	30	200
22.	Details Of Others Appliances & Equipment.	–	–
1.	Breathing Apparatus Compressor.		1
2.	Rapid Response Vehicle.		4
3.	Mini Fire Tender.		4
4.	Rapid Response Bike with Water Mist Portable System.		12

4. COMMUNICATION SYSTEMS

FIRE STATION	ADHARWADI	D – WARD	MIDC	H-WARD	MURBAD ROAD
Centralized control room.	✓	X	X	X	X
Emergency operation room for handling disaster.	✓	X	X	X	X
Telephone.	✓	✓	✓	✓	✓
Mobile.	✓	✓	✓	✓	✓
Wire less.	✓	✓	✓	✓	✓
UHF.	X	X	X	X	X
VHF.	X	X	X	X	X
Internet.	X	X	X	X	X
Internet connectivity to fire stations.	X	X	X	X	X
Tie up with radio.	X	X	X	X	X
TV.	X	X	X	X	X
Cable channels.	X	X	X	X	X
Mobile channels providers.	X	X	X	X	X
Global Positioning System (GPS) devices on fire appliances.	X	X	X	X	X
Vehicle tracking system on fire appliances.	X	X	X	X	X
Geographical Information System (GIS).	X	X	X	X	X
Standard Operating Procedures (SOP's).	X	X	X	X	X

5. **DISASTER MANAGEMENT PLAN**

We are the part of the District Disaster Management Plan.

6. **DISASTER MANAGEMENT PLAN (DISH KALYAN DIVISION)**

Disaster Management Plan is developed for Kalyan Division by Department of Industrial Safety and Health (DISH KALYAN DIVISION).

The plan provides ready information of regarding the industries in and around KDMC area for Fire fighting and additional resources available form the factories in case of emergency.

7. **MUTUAL AID AND RESOURCES GROUPS (MARG)**

Directorate of Industrial Safety and Health (DISH) in Maharashtra, has promoted the Mutual Aid and Resources Groups (MARG). Since 1990, various MARG groups of factories are encouraged and established in different industrial clusters dominated by chemical factories, in districts of Thane, Raigad and Mumbai to augment the capabilities for tackling emergencies and to upgrade the skills and knowledge of all those involved, particularly of those from the off-site agencies. A unique aspect of the MARG concept is that these groups are working totally under voluntary bindings amongst the constituents.

MARG offers certain solutions to our peculiar situations. This forum - MARG - in Kalyan division has been engaged in exchange and sharing of knowledge, information and expertise since last three years. The group which mainly comprises of safety professionals meets once in a month. The officers of Directorate invariably attends these meetings. During discussions a case study of recent accident is presented and is discussed. The meeting takes place in factories by rotation. The discussion is then followed by demonstration of fire-fighting or some other topic, and some times by Mock Drill.

FIRE HAZARD RESPONSE AND MITIGATION PLAN

The philosophy of MARG is based on **ELEVEN A's**

1.	Aware – about the problems.	7.	Achieve – preparedness.
2.	Acquaint – with area, all the role players.	8.	Assist – in training and up gradation of skills.
3.	Appraise – situation.	9.	Alert – for likely eventualities.
4.	Appropriate – choose methods.	10.	Aid – each other.
5.	Augment – capability.	11.	Action – whenever required.
6.	Acquire – resources.		

A close interaction between the responder agencies and factories, and also amongst factories of a particular area should be in a position to generate necessary machinery, which would include resources, expertise, experience, communication and conveyance facilities, medical help in a requisite time, order and much of efforts. The Kalyan Ambarnath Manufacturers Association has been active in supporting this activity since beginning, which needs to be encouraged.

Collect all “On Site” and “Off – Site Disaster Management Plans” for all vital installations, buildings and industrial plants in the jurisdiction and the role of Fire Services in them.

8. TRAINING

SR. NO.	DESCRIPTION	STATUS
1.	Parade ground.	Available only at following fire stations; 1. MIDC Dombivli. 2. Adharwadi [H.Q.].
2.	Drill tower.	Available at Adharwadi [H.Q.].
3.	Water tanks for wet drills.	Available in fire station compound at Adharwadi, (capacity 2 Lakh liters) and MIDC Dombivli (capacity 30 Kl.). To facilitate the wet drill one water tank of at least 25 Kl. capacity with fully charged hydrant connection at compound of the fire station is required.
4.	Training class room facilities at fire station premises.	Training Hall of 40 person capacity at Adharwadi [HQ] Training classroom facilities such as LCD projector Audio, Video system are required.

**ANNEXURE 1: GAP ANALYSIS FOR FUND REQUIREMENT
AS PER STANDING FIRE ADVISORY COUNCIL**

SR. NO.	TYPE OF VEHICLES	EXISTING	FUTURE	APPROX EXPENDITURE ₹ IN CRORES
1.	Fire Stations.	04	08 FS – II 01 FS – III 02 FS – IV 05	6.00
2.	Water Tenders.	06	20	6.00
3.	Rescue Tenders.	-	02	1.50
4.	Advance Emergency Rescue Tenders.	-	01	0.80
5.	Flood & Rescue Tenders.	-	02	1.50
6.	Hazmat Vans.	-	01	1.25
7.	Turn Table Ladders.	-	01	8.00
8.	Hydraulic Platforms.	-	02	15.00
9.	Foam Tenders.	-	01	0.50
10.	Smoke Blowers.	-	02	0.50
11.	Water Tankers.	1	08	4.00
12.	Ambulances.	1	04	0.24
13.	Cars.	-	02	0.10
14.	Jeeps.	-	05	0.30
15.	High Pressure Portable Pumps.	03	10	1.50
16.	Rapid Response Vehicle.	-	04	2.00
17.	Mini Fire Tender.	-	04	1.50
18.	Rapid Response Bike with Water Mist Portable System.	-	12	0.09
			TOTAL	50.78

Future station development and procurement of the above required vehicles and equipments requires budget provision of ₹ 50,78,000,00/- (ie. ₹ 50.78 Crores) approximately.

Annexure 2: Fact Sheet as per format for fire and hazard response and mitigation plan by Directorate of Maharashtra Fire Service, Mumbai.

DIRECTORATE OF MAHARASHTRA FIRE SERVICE,
C/o MIDC Head Office, Udyog Sarathi Building
Mahakali Caves Road, Andheri East, Mumbai – 400 093.

- A Law and Authorities:
(Public Relation & Crisis Coordination, Coordination with other Govt. Agencies)
1. Name of City : Kalyan Dombivli Municipal Corporation, Kalyan.
 2. Population of City as per 2001 Census : 10,47,297
 3. Area of City (In Sq. Kms.) : 67.65 sq.k.m.
 4. Population Density of City : 15,401
 5. Name of the Authority maintaining Fire & Emergency Services : Commissioner,
Kalyan Dombivli Municipal Corporation, Kalyan
 6. Are you maintaining fire & Emergency Service as per Govt. of India Guidelines
 - a) One fire engine for 50,000 population upto 3,00,000 population. From 3,00,000 upwards additional Fire Engine per lack of population or Fraction thereof : No
due to 1. financial constraint
2 .Fast development of the area
 - b) One fire station for 10 sq. Km Urban area : 3. Shortage of manpower
 - c) One fire station for 50 sq.km. Rural area : NA
 - d) Response time maximum 5 minutes in Urban Area and 20 minutes in Rural area : No due to 1. mixed area , rural and urban
2. narrow roads , traffic , congested area
 7. Administrative Head of Fire & Emergency Service :

Name	: Mr. Prabhakar.Jagadale.
Designation	: Assistant Commissioner
Address with Pin Code	: Municipal Corporation Head quarters Shankerrao Chowk,Kalyan Dist Thane 421301
Telephone No. (With STD Code)	: 0251- 2206205
Fax No.	: 0251- 2205858
Mobile No.	: 9869923226
E-Mail	:
Website	: www.kdmc.gov.in
 8. Head of Fire & Emergency Service

Name	: Dilip N. Gund
Designation	: Deputy Chief Fire Officer
Address with Pin Code	: Adharwadi Fire Station H.Q. Near Durgadi Fort, Kalyan. Dist Thane 421301
Telephone No. (With STD Code)	: 0251- 2315101
Fax No.	: 0251- 2310155

- Mobile No. : 9820452466
 E-Mail : dilipgund101@gmail.com
9. Name of Central Fire & Emergency Station : Adharwadi Fire Station H.Q.,
 Fire & Emergency Service Head Quarters : Opp. Durgadi Fort,
 Address with Pin Code : Kalyan. Dist Thane 421301
 Telephone No. (with STD Code) : 0251- 2315101
 Fax No. : 0251- 2310155
 E-Mail :
10. Do you conduct any fire safety training : Yes – Fire Week
 program or awareness program for the : 1. Fire department information and educational
 public. : exhibition
 : 2. fire and emergency demonstration
 : 3. distribution of handbills
 : 4. safety stickers
 : 5. use of local TV channel
11. Do you carry out evacuation drills/ mock : Yes & also participate in various Programs arrange by
 drills in vital installation/ industrial plants/ : other Govt. organization.
 Govt. Buildings : 1. January & July – high rise & commercial buildings.
 : 2. 14 to 20 April Fire week – All citizens.
 : 3. September & December – Schools.
 : 4. Occasionally – Malls, Assembly areas.
- B Risk Assessment, Incident Prevention & Mitigation of City:**
 (Risk Evaluation and control)
12. Is the Fire Approval is Mandatory : as per NBC & D. C. Rule KDMC
 For construction of all types of buildings : (15 Mtr. & above) , as per M.F.S.&L.S.Act provision ,
 information given to town planning .
13. Is the Fire Approvals are as per the : Yes
 Provisions contained in National Building :
 Coed 2005.
14. Is the central data of all fire approval is : Yes – Since September, 2005
 maintained in Head Quarters.
15. Please provide the copy of Development : Attached Herewith
 Control Rules of the City
16. Please Provide the details of Potential Fire Risk in the City

SR. NO.	PARTICULARS	NUMBERS
		Residential/ non residential
1.	Buildings	
	Upto 15 Meters	7084
	15 to upto 24 Meters	2384
	Above 24 to upto 36 Meters	140
	Above 36 to upto 45 Meters	43
	Above 45 to upto 60 Meters	17
	Above 60 to upto 75 Meters	-
	Above 75 to upto 100 Meters	-
	Above 100 to upto 150 Meters	-
	Above 150 Meters above	-
2.	Industrial Area/Chemical Zone	356.43 Hec.
3.	Cinema Halls/Malls / Drama Theatres	7

SR. NO.	PARTICULARS	NUMBERS
4.	Public Gathering Places	02
5.	Hazards Storage	-
6.	Pilgrims Area (Floating Population)	-
7.	Exhibition / Public Function Grounds where permission for erecting pedals for circus or any other religious /social functions are granted.	6
8.	Other (Please give details)	-

17. Road Network:

- a) Any major National Highway passing through City : Three – Agra Road, Murbad Road, Puna Link Road,
b) Any State Highway passing through City : NH-222
c) Any Tunnels in the City : NIL
d) Major Bridges in the City : Kon Bridge, Gandhari Bridge, Mohana Bridge
e) Accident prone patches : Shahad Bridge. 'A' Ward.
f) Roads in Hilly Areas or Hilly/Mountain Area in the City or near City : NIL

18. Railway Network

- a) Mail/Express Train main Stations : Kalyan
b) Local Train Stations : Kopar, Dombivli, Thakurli, Kalyan, Shahad, Ambivli, Titwala, Vithalwadi
c) Metro Train Stations : NIL
d) Underground Metro Stations : NIL
e) Sky Bus : NIL
f) Mono Rail : NIL

19. Airport

- a) Domestic : NIL
b) International : NIL
c) Cargo : NIL
d) Helipad : NIL
e) Air force Airbase : NIL

20. Sea / River Port

- a) Passenger Jetties : NIL
b) Container Jetties : NIL
c) Bulk Material Handling Jetties : NIL
d) Petroleum Products Handling Jetties : NIL
e) Chemicals & Hazardous Goods Handling Jetties : NIL
f) Fishing Jetties : NIL
g) Ship Breaking Areas : NIL
h) Ship Building Docks : Yes – Kalyan. 'C' Ward.
i) Naval Base : NIL

21. Vital Installations in the City

- a) Secretariat : NIL
b) Legislation Assembly : NIL
c) Bank Headquarters : NIL

- d) HQ's of major Govt & Semi Govt. Organisations : NIL
- e) Atomic Power Stations : NIL
- f) Chemical Factories : One no. 'A' Ward.
- g) Fertiliser Plants : NIL
- h) Major Hazardous Units : NIL
- i) Cross Country Pipelines : NIL
- j) Petroleum Oil Companies like Refinery, Bulk Storage Depot, : NIL
- k) Petroleum & Flammable Gas, LPG filling Stations : NIL
- l) Domestic Gas Pipe Network : Under process Pune Link Road to Dombivli MIDC & up to Durgadi Fort
- m) Cylinder Gas Storage-outlets : LPG – Godawn – 8.
22. Temporary Structures such as Exhibition Halls, Circus Tent, Pedals erected for religious activities : Yes.
APMC market, Maxi ground, Shelar park, Nehru maidan, KDMC sports complex, Subhash maidan, Dombivli Gymkhana, Durgadi fort, Tisgaon maidan, Titwala Ganesh mandir. 10 nos.
23. Dilapidated & Unsafe Buildings in the City : 93 & 374 As per November 2010.
24. Unorganised Houses like Juggi Zopadi & Slum Area : Total 74 out of which 12 are major.
25. Geological Hazards Associated with City :
- a) Earthquake : No.
- b) Tsunami : No
- c) Landslide, Mudslide, Subsidence : Yes – Land slide Netivali , one or two times in a year – minor 'D' Ward.
- d) Glacier, Iceberg : No
26. Meteorological Hazards Associated with City:
- a) Flood, Flash Flood, Tidal Surge : Yes – All Wards.
- b) Drought : Never
- c) Fire (Forest, range, urban, wild land) : Urban
- d) Snow, Ice, Hail, Avalanche : Never
- e) Windstorm, tropical, cyclone, hurricane, tornado, water spout, dust/sand storm. : Yes – water spout
- f) Extreme temperatures (Heat, cold) : Never
- g) Lightning Strikes : Yes
- h) Famine : Never
- i) Geomagnetic Storm : Never
27. Biological Hazards Associated with City:
- a) Emerging, diseases that impact human or animal (Swine-flu, Malaria, Birds flu, Plague, Smallpox, Anthrax, Foot & Mouth Disease. : Swine Flu ,Home Curreactive chemoprophylaxis Malaria , Bird Flue ,Plague , Smallpox , Anthrax Foot & Mouth Disease
- b) Animal or Insect infestation or damage. : Never

28. Human Caused events such as following :
- a) Accidental
 - i) Hazardous material (explosive flammable : Never
liquid, flammable gas, flammable solid,
oxidizers, poison, radiological,
corrosive) spill or release.
 - ii) Explosion / Fire : Never
 - iii) Transportation accident : Yes , Occocationaly 7to 8 times yearly .
 - iv) Building/ Structure Collapse : Yes
 - v) Energy/Power/Utility failure : Yes
 - vi) Fuel/Resource Shortage : Never
 - vii) Air / Water Pollution, contamination : Never
 - viii) Water control structure /dam/level : Never
failure
 - ix) Financial issues (economical depression, : Never
inflation, financial system collapse)
 - x) Communication system interruptions : Never
 - xi) Misinformation : Never
 - Intentional – Related to law and order machinery**
 - i. Terrorism (explosive, chemical, : Never
biological, radiological, nuclear, cyber)
 - ii. Sabotage : Never
 - iii. Civil disturbance, public unrest, mass : Never
hysteria, riot
 - iv. Enemy attack, war : Never
 - v. Insurrection : Never
 - vi. Strike or labour dispute : Never
 - vii. Disinformation : Never
 - viii. Criminal activity (vandalism, arson, theft, : Never
frud, embezzlement, data theft)
 - ix. Electromagnetic pulse : Never
 - x. Physical or information security breach : Never
 - xi. Workplace violence : Never
 - xii. Product defect or contamination : Never
 - xiii. Harassment : Never
 - xiv. Discrimination : Never
29. Technological Caused events that can be unrelated to natural or human caused events, such as the following:
- a) Central computer, mainframe, software, : Yes
or application (internal/external)
 - b) Ancillary support equipment : Never
 - c) Telecommunications : Never
 - d) Energy/Power / Utility : Yes

30. Analysis of Fire & Research Calls to Draw a Probability of Hazards:

Sr. No.	Particulars	2005	2006	2007	2008	2009
1.	Total No. of Fire & Rescue Calls					
	a) No. of Fire Calls	146	200	199	329	241
	b) No. Rescue Calls	397	238	286	372	408
	c) No. of Gas Leaks	11	23	25	32	42
	d) Building Collapse	18	18	08	18	08
	e) Hazards Material Calls	-	-	-	-	-
	f) Animal Rescue Calls	39	32	58	54	53
	g) Other Calls					
2.	No. of Lives Saved	454	-	-	10	-
	No. of Lives Lost	23	16	24	48	41
	No. of Injured	25	23	21	33	51
3.	Property Saved (Rs. In Lakhs)	485	1119	1370	2155	3229
	Property Lost (Rs. In Lakhs)	343	206	9233	1274	5384

31. Analysis of Incidents :

Sr. No.	Particulars	2005	2006	2007	2008	2009
A	Nos. of Fire/Rescue Calls received From 7000 hrs to 1900	344	265	235	451	354
B	Nos. of Fire/Rescue Calls received From 1900 hrs to 7000	199	173	250	250	295

C Planning Resource Management & Incident Management :

(Mutual Aid/Assistance, Emergency Response and Operations, Developing and implementing emergency response plan & procedures.)

32. Please provide the copy of Disaster Management Plan of the City : Attached

33. Do you have any Mutual Aid with any Central or other State Govt. Authority for conducting fire & rescue operations Please provide details : No

34. Is on site and off site disaster managements Plan is in place for all vital installations, buildings and industrial plants. And is in sync with the district disaster management plan. : Nil

35. Addresses of Fire Stations :

Sr. No.	Name of Fire Station	Type of Construction of Fire Station i.e. RCC/Metal Shade/Temporary Shade	Address	Telephone No.	Fax No.
1	Adharwadi	RCC	Adharwadi Fire Station H.Q., Opp. Durgadi Fort, Kalyan (W)	0251-2315101	0251-2310155
2	D - Ward	Metal Shade	D-Ward Office, Kolsewadi, Kalyan (E)	0251-2365101	-
3	MIDC	RCC	Nr. State Bank, MIDC, Dombivli (E)	0251-2470357	-
4	H-Ward	RCC	H-Ward Office Gupte Road, Dombivli (W)	0251-2400447	-
5	Murbad Rd.	Under Renovation	Murbad Rd., Opp. Chaya Cinema, Kalyan (W)	101	-

36. Details of Fire and Rescue Appliance made available in Fire Stations:

Sr. No.	Name of Fire Station	Number of Water Tenders	Number of Rescue Tenders	Number of Ladders i.e. TTL/ALP's	Other fire or rescue Appliances
1	4	6	1	NIL	1 Water Tanker 1 Ambulance

37. Summary of Fire and Emergency Service :

SR. NO.	TYPE OF VEHICLES	EXISTING	FUTURE
1.	Number of Fire Stations.	4	8
2.	Water Tenders.	6	20
3.	Rescue Tenders.	0	2
4.	Advance Emergency Rescue Tenders.	0	2
5.	Flood & Rescue Tenders.	0	2
6.	Hazmat Vans.	0	1
7.	Turn Table Ladders.	0	1
8.	Hydraulic Platforms.	0	2
9.	DCP Tenders.	0	0
10.	Foam Tenders.	0	2
11.	Smoke Blowers.	0	2
12.	Control Post Vans.	0	1

SR. NO.	TYPE OF VEHICLES	EXISTING	FUTURE
13.	Water Tankers.	1	8
14.	Ambulances.	1	4
15.	Cars.	0	2
16.	Jeeps.	0	5
17.	High Pressure Portable Pumps.	0	4
18.	Portable Pumps.	3	10
19.	Breathing Apparatus Sets.	10	50
20.	Flood Rescue Boats.	8	5
21.	Life Jackets.	30	200
22.	Details Of Others Appliances & Equipment. 1. Breathing Apparatus Compressor 2. Rapid Response Vehicle 3. Mini Fire Tender 4. Rapid Response Bike with Water Mist Portable System	-	1 4 4 12

43. Details of Officers & Staff attached to Fire & Emergency Service:

Sr. No.	Designation	Pay in Pay Band	Grade Pay	No. of Posts		
				Sanctioned	Filled	Vacant
1	Chief Fire Officer	8,000 – 13,500	--	01	--	01
2	Dy. Chief Fire Officer	6,500 - 10,500	--	01	--	01
3	Divisional Fire Officer	--	--	--	--	--
4	Asst. Divisional Fire Officer	--	--	--	--	--
5	Station Officer	4,880 – 10420	--	04	01	03
6	Assistant Station Officer	--	--	--	--	--
7	Sub-Officer	4050 – 8915	--	12	09	03
8	Leading Fireman/Rescuer	3610 – 7750	--	30	05	25
9	Driver Operator	3900 – 8410	--	30	03	27
10	Driver	2970 – 5420	--	--	21	--
11	Fireman/Rescuer	3460 – 7245	--	150	70	80
12	Others (Specify Designation)					

- D Responses Mechanism:
(Communication, Warning and Operational Procedures)
1. Centralised Control Room/ Emergency Operation Rooms for Handling Disaster is provided or in operation . : Yes
 2. Internet Connectivity is provided for all fire stations. : No
 3. Computerizations of centralized control room is done? i.e. all the fire stations are connected with internet to Centralised control room. : No
 4. Communication System (Like VHF/UHF with details of Frequency should be given) : VHF, 146.312MHZ
 5. Any warning system is design to alert the occupants in case of disaster (Tie ups with Radio, TV Channels, Cable Channels Mobile Service Providers etc.) : Yes
 6. Is Systematic Operational Procedures (SOP's) are in place for responding to any emergency? Please provide copies of the SOP's. : Yes, attached as Annexure no. 3.
 7. Please provide cities digitized maps (Which shows road, rail, airports, seaports, and other vital installations) : Attached / CD
 8. Is all fire appliances are provided with Global Positioning System devices i.e. GPS system. Provide details : No
 9. Is all fire appliances are provided with Vehicle tracking system. Provide details : No
- E Training, Exercises, Evaluations and Corrective Actions:
1. Do you have any Fire & Emergency Training School/Center for imparting Training to your staff or public Please provide details. : No
 2. Type of training program conducted in the training school /center : No
 3. Is the residential facility available in the training centre : No
 4. Number of class rooms available in the training center : N. A.
 5. Number of staff made available to the training center. : N. A.
 6. Please provide the details of the Labs, laboratory, library available in the training center. : N. A.
 7. Any Auditorium, Convention Hall available in the training center. Please provide seating capacity : N. A.
 8. Does you impart training to outsiders or industries or public. : No
- F Financial Management of Fire & Emergency Service:
(Fire Tax, Fire Cess, Capitation Fees, Service Charges etc.)
1. What are the statutory instruments (Special Act, Corporation Council Acts Rules) to levy taxes / cess as service charge. Please give details thereof. : BPMC 1949
M.F.S.&L.S.Act
2006
 2. Do you recover Fire Tax or Cess from the properties in the city. Please provide circular or office order : Yes
 3. Do you levy any other fees or tax for special or High Rise Buildings. Please provide circular or office order : No
 4. Any fees levied for grant of Fire Approvals for buildings. Please provide a copy a circular. : General Body
Resolution — No
37 dated 13 June
2005
 5. Do you charge any special charges for standby duties or service rendered. Please provide circular or office order. : As above

6. Do you have separate fund for up gradation of fire and emergency services. : Yes

Details of Expenditure of Fire Service

Sr. No.	Year	Establishment Expenditure	Maintenance Expenditure	Civil Expenditure	Other Expenditure
1	2004-05	134.51	5.22	--	0.49
2	2005-06	140.15	10.24	--	0.49
3	2006-07	161.89	9.34	--	0.41
4	2007-08	190.66	11.24	--	0.08
5	2008-09	239.59	15.00	--	0.45
6	2009-10	297.00	10.40	--	0.60

7. Details of Future Plan

Sr. No.	Year	Establishment Expenditure	Maintenance Expenditure
1	2010-11	410.00	15.00
2	2011-12	450.00	25.00
3	2012-13	500.00	30.00
4	2013-14	555.00	35.00
5	2014-15	610.00	40.00

8. Give details about the income received by your Fire Service

Sr. No.	Year	Income Received				Any other
		Fire Tax	Fire Fee	Fire Service Charges	Capitation Fee	
1	2004-05	17.41	--	--	--	
2	2005-06	17.95	1.51	4.71	69.06	
3	2006-07	21.12	4.93	4.81	146.59	
4	2007-08	21.35	5.77	4.12	71.79	
5	2008-09	27.12	7.09	3.62	67.72	
6	2009-10	32.41	6.48	14.83	101.00	

- G Human Resource Management :
- a) Manpower Planning : -
- b) Number of Post sanctioned and vacant : 228 - Sanctioned
133 - Vacant
- c) Recruitment procedure i.e.
- a. Recruitment Rules : ✓
- b. Group Discussions : -
- c. Personal Interview : ✓
- d. Training and Development :
1. Induction Training : Nil
2. Refresher Training : Nil
3. Motivation Training : Nil

- 4. Special Skill Training : Nil
- 5. Any other : Nil
- e. Carrier and Successor plan : No
- f. Migration Plan : No
- g. Retirement : Age of 58 as per Corporation Rule
- h. Plan for utilization of retired persons services : No

PERSONAL INFORMATION OF OFFICERS AND WORKERS IN FIRE FIGHTING SERVICES

Sr. No.	Name	Local Address	Date Of Birth	Education	Name of The Completed Course Name of The Institution	Blood Group	Extra Curricular Activity	Physical Fitness (Serious Illness)	No. of Family Members	Member of Welfare Association	Year of Blood Donation
1.	Mr. Dilip N. Gund.	K-4/104, Gokul Nagari Annex, Khadakpada, Kalyan (W), Dist Thane – 421 301.	06/06/63	B.A.	Sub officer Station officer N.F.S.C. Nagapur	A+	MS-CIT	Fit	4	Yes	8 To 10 Yrs. back
2.	Mr. Subhas G. Chavan.	203, Om ShiwadarsanCHS, Patharli Road, Opposite Shivmandir, Dombvli (E), Dist. Thane.	15/06/62	S.S.C.	Sub Officer. N.F.S.C. Nagpur.	A+		Fit	4	Yes	1985.
3.	Mr. Suresh B. Shinde.	7, Kaveri Krishna CHS, Kalyan (E), Dist. Thane.	01/06/62	B.Com.	Sub officer Station officer N.F.S.C. Nagapur	B+	MS-CIT	Fit	5	Yes	1982, 1985
4.	Mr. Damodhar C. Wangad.	B-11/3, Jay Raghunandan CHS, Sahyadri Nagar, Kalyan (W), Dist. Thane.	08/06/71	B.A.	Sub officer Station officer Divisional officer N.F.S.C. Nagapur	B+	MS-CIT	Fit	5	Yes	1989, 1992
5.	Mr. Sudhakar R. Kulkarni.	Milkanth Vally, G/201, Lalchouky, Agra Road, Kalyan (W), Dist. Thane 421301.	22/05/62	B.A.	SFIC Mumbai Sub officer Station officer Divisional officer N.F.S.C. Nagapur	AB+	MS-CIT NCC "C" certificate	Fit	4	Yes	2009 regular
6.	Mr. Dilip M. Palav.	4/2 Pramod Niwas, Behind Holi Cross School, Chikanghar, Kalyan (W), Dist. Thane.	19/06/67	B.Com.	Basic fire fighting Sub officer Station officer Divisional officer N.F.S.C. Nagapur	O+	Na. S.D. Primary first aid KshetraraFire fighting	Fit	6	Yes	
7.	Mr. Namdeo L. Choudhari.	201, Chitapark, Opposite Pavandham, Ghandhari, Kalyan, Dist. Thane.	11/07/69	B.Com.	Basic fire fighting Sub officer Station officer Divisional officer N.F.S.C. Nagapur	B+	MS-CIT	Fit	4	Yes	

Sr. No.	Name	Local Address	Date Of Birth	Education	Name of The Completed Course Name of The Institution	Blood Group	Extra Curricular Activity	Physical Fitness (Serious illness)	No. of Family Members	Member of Welfare Association	Year of Blood Donation
8.	Mr. Kailash Babji Madekar.	Akshya Apartment, Chaitanya Sankul (A) High Way Road, Shirgaon, Badlapur (E).	21/01/62	S.S.C.pass Mumbai F.Y.B.A.	Sub officer N.F.S.C. Nagpur Institution	0	Cricket Hollball Caram	Fit	4	Yes	
9.	Mr. Ramesh B. Knopade.	Siddhivinayak Residency, F-201, Deshmukh Homes, Kalyan Shil Road, Opposite Tata Power House Kalyan (E), Dist. Thane.	02/03/62	SSC Pass	SFTC Mumbai Sub officer Station NFSC Nagpur	AB+	Hollball Caram	Fit	4	Yes	2009
10.	Mr. Sunil Balkrishna Bhawe.	204, Gaurinandan Niwas, Gupte Road, Old Dudh Naka, Kalyan (W), Dist. Thane.	26/11/55	Service graduate	Sub-officer Station – officer NFSC Nagpur	B+	Sportman Kabbadi Hollball Cricket Ex. Serviceman	Fit	3	Yes	
11.	Mr. Raghunath S. Shinde.	Shriji Darshan Building, Ghandhari, Kalyan Nashik Highway, Kalyan (W), Dist. Thane.	01/06/53	7 th std		B		Fit	4	Yes	
12.	Mr. Yashwant G. Pawar.	D-12/20, Annapura Nagar, Adhanwadichauk, Kalyan (W), Dist. Thane.	02/06/58	9 th std Pass		A+		Fit	4	Yes	
13.	Mr. Nakul M. Karbhari.	Anjaney CHS, Kolivali, 'A' Wing Room No. 104, Ghandhari Road, New Nashik High Way, Kalyan , Dist. Thane.	12/05/57	10 th std Fail	Civil Defense Fire fighting	O+		Fit	4	Yes	
14	Mr. Sunil G. More.	K-203 , Devraj Park, Kongaon, Tal. Bhiwandi, Dist. Thane – 421311.	05/10/63	S.S.C	Basic fire fighting, Mumbai Sub Station officer N.F.S.C. Nagpur	A+	Civil defence	Fit	4	Yes	
15.	Mr. Ravi Halva Govari	C-303, Siddhivinayak Residency, Near Tata Power House, Dombwli (E).	01/02/71	12 th std Pass	SFTC Mumbai Sub officer NFSC Nagpur	O+		Fit	4	Yes	
16.	Mr. Dilip Baburao Kothnir	Shriji Darshan Block No. 302, Opposite Chandresh Galaxy, Ghandhari.	07/10/56	9 th std Pass		-	Civil defence	Fit	4	Yes	

Sr. No.	Name	Local Address	Date Of Birth	Education	Name of The Completed Course Name of The Institution	Blood Group	Extra Curricular Activity	Physical Fitness (Serious Illness)	No. of Family Members	Member of Welfare Association	Year of Blood Donation
17.	Mr. Ramesh Rambhau Patil.	Mulkam Post. Dwari Tal. Ambar Nath, Dist: Thane.	01/06/61	S.S.C.		O+		Fit	4	Yes	
18.	Mr. Purshotam B. Mohape.	Jai Uma Ashish CHS, Kalyan Shil Road, Room No. 503, Dombwli (E), Dist. Thane.	01/06/61	SSC fail		AB+		Fit	5	Yes	
19.	Mr. Tukaram N. Patil.	P. O. Sonarpada, Mampada, Ganubai Nivas, Narayan Wadi, Behind Gavdevi Mandir, Kalyan Shil Road, Dombwli (E), Dist. Thane.	01/06/61	B.A.pass	SFTC Mumbai Sub officer NFSC Nagpur	O+	Chess Hollball Caram Reading Homeguard	Fit	6	Yes	1988
20.	Mr. Sadashiv S Mare.	Pundlik Smurti Room No. 19, Cheda Road, Near Joshi High School, Dombwli (E), Dist. Thane.	19/06/57	S.S.C. Fail		A+	Participation in cultural program	Fit	4	Yes	1995 1996 1997 1998 1999 2000
21.	Mr. Sanjay N. Ghavan.	Harjan Colony, Andhra Bank, Opposite Mahesh CHS, Near Baba Ramdeo Mandir, Dombwli (E), Dist. Thane.	12/02/63	S.S.C. Fail	S.F.T.C. Mumbai	O+		Fit	4	Yes	1998 2006
22.	Mr. Ranchoandra Dhondu Mahala.	P. O. Hanaman Nagar, Shigaon (Boiser), Tal. Palghar, Dist. Thane.	10/05/69	S.S.C.	S.F.T.C. Mumbai	0	Kabbadi	Fit	5	Yes	
23.	Mr. Jeewan Tappa Gorade.	8/305, Sidhivinayak Apartment, Tata Power House, Kalyan Shil Road, Dombwli (E), Dist. Thane.	22/11/63	S.S.C.	S.F.T.C. Mumbai sub-Officer NFSC Nagpur	B+	Caram Cricket Hollball	Fit	4	Yes	
24.	Mr. Amant Raosahab Jadhav.	Shankar Apartment CHS, 'B' Wing, First Floor, Room No. 103, Ganeshnagar, Dombwli (W), Dist. Thane.	01/06/58	9 th std Pass		B+		Fit	3	Yes	

Sr. No.	Name	Local Address	Date Of Birth	Education	Name of The Completed Course Name of The Institution	Blood Group	Extra Curricular Activity	Physical Fitness (Serious Illness)	No. of Family Members	Member of Welfare Association	Year of Blood Donation
25.	Mr. Laxman V. Patil.	Sayaji Apartment, Fourth Floor, Room No. 403, Opposite Hiradevi Mandir, Kharegaon, Kalva, Dist. Thane.	27/06/54	4 th std Pass		O+		Fit	4	Yes	
26.	Mr. Ashok J. Suryavanshi.	203/1, Karuna Sagar CHS, Kulgao Badalapur Nagarpalika Road, Badalapur (E).	18/10/57	S.S.C.		AB+		Fit	4	Yes	2003 2004
27.	Mr. Balkrishna S. Sirsat.	Mu. Post. Nandgaon, Burdruk, Taluka Igatpuri, Near Darana Dam, Dist. Nashik.	20/10/66	12 th std commerce Pass		A+		Fit	7	Yes	1998
28.	Mr. Mastan G. Baraf	Everest Nagar Chawl No. 10, Room No. 4, Beturkar Pada, Kalyan (W), Dist. Thane.	11/09/67	7 th std Pass		O+		Fit	6	Yes	
29.	Mr. Suraj Kumar R. Yadav.	B/101, Tijadeep Plaza Building, Pachpakhadi, Opposite Niin Junction, Thane (W).	09/08/70	S.S.C.	Sub officer NFSC	O+	Disaster risk management program	Fit	4	Yes	2000
30.	Mr. Ram Y. Kharade.	Shri Complex, Phase I, Room No. 2 Ground Floor, Kalyan (W), Dist. Thane.	01/06/55	9 th std Pass		A+		Fit	3	Yes	
31.	Mr. Bhausaheb V. Pagar.	Ekvira Colony Room No. 2, Om Sai, Near Vithal Tower, Beturkarpada, Kalyan (W), Dist. Thane.	20/07/70	S.S.C.		B+		Fit	5	Yes	2002
32.	Mr. Ravindra B. Isame.	Ganeshkrupa Chawl, Room No. 7, Opposite Ram Mandir, Chikanghar, Kalyan (W), Dist. Thane.	09/07/62	8 th std Pass		B+		Fit	4	Yes	
33.	Mr. John S. Moor.	Harshana Apartment, Third Floor, Chikanghar, Near Holy Cross School, Kalyan (W), Dist. Thane.	12/12/66	S.S.C.		A+		Fit	4	Yes	
34.	Mr. Sudhakar Bavskar.	Nav Ambika Nagar, 'F' Wing, 305, Shahad, Kalyan (W), Dist. Thane.	01/06/73	S.S.C.		B+		Fit	4	Yes	

Sr. No.	Name	Local Address	Date Of Birth	Education	Name of The Completed Course Name of The Institution	Blood Group	Extra Curricular Activity	Physical Fitness (Serious Illness)	No. of Family Members	Member of Welfare Association	Year of Blood Donation
35.	Mr. Harishchandra N. Bhondiwale.	Everset Nagar, A-6, Beturkar Pada, Room No. 7, Kalyan (W), Dist. Thane.	01/06/71	9 th std Pass		O+		Fit	8	Yes	
36.	Mr. Kuttubuddin Gafur Tadvi.	Subhash Tekadi, Guru Nanak High School Road, Ulhasnagar - 4.	01/06/67	9 th std Pass		O+		Fit	4	Yes	
37.	Mr. Manohar Muridhar Nikam.	S. G. Gaikwad, Chawl No. 2, Building No. 212, Shivaji Colony, Kalyan (E), Dist. Thane.	31/12/66	S.S.C.		O+		Fit	4	Yes	
38.	Mr. Adinath A Shinde.	Hayma Chaudhari Chawl, Shantinagar, Ulhasnagar - 3.	13/07/69	S.S.C.		B+		Fit	5	Yes	
39.	Mr. Yashwant K. Ghanghale.	A/7, Porrima Sadan, Sita Nagar, A/ide Gao, Dombivli (E), Dist. Thane.	02/07/65	S.S.C.		B+		Fit	4	Yes	1994 1995
40.	Mr. Gajanan R. Karbhari.	G. R. Patil College, Behind Chougakle School, Vispati Chawl, Room No. 2, Sonarpada, Kalyan Shil Road, Dombivli (E), Dist. Thane	22/12/63	7 th std Pass		-		Fit	3	Yes	
41.	Mr. Baliram G. Patil.	P. O. Umbarde, Taluka: Kalyan, Behind Khandoba Kulshan, Umbarde Gao, Kalyan.	17/06/60	5 th std		A+		Fit	6	Yes	
42.	Mr. Sambhaji R. Sawant.	Sidhvi Vinayak Residency, G-105, Phase II, Kalyan Shil Road, Deshmukh Bems, Tatapower Dombivli (E), Dist. Thane.	15/06/56	10 th std Pass		O+		Fit	4	Yes	1988 1993
43.	Mr. Tukaram B. Sinarkar.	D. K. Bhoir Chawl, Room No. 1, Kalyan Ramdas Vadi, Sindhigate, Kalyan (W), Dist. Thane.	01/06/60	9 th std Pass		B+	Kabbadi Hoolball	Fit	4	Yes	2005
44.	Mr. Amar Kumar Bhagwanji Athawale.	A - 268, Sector No. 2, Airoli (CIDCO) Navi Mumbai.	01/07/67	S.S.C.		O+	Kabbadi Hoolball	Fit	2	Yes	2007

Sr. No.	Name	Local Address	Date Of Birth	Education	Name of The Completed Course Name of The Institution	Blood Group	Extra Curricular Activity	Physical Fitness (Serious Illness)	No. of Family Members	Member of Welfare Association	Year of Blood Donation
45.	Mr. Ravindra Tukaram Shinde.	A – 204, Rihdyi Sadan CHS, Ganesh Nagar, Dombvil (E), Dist. Thane.	27/04/66	8 th std		B+	Caram Holball	Fit	3	Yes	1983 1993
46.	Mr. Anil Keval Thakur.	Om Manohar CHS, Tukaram Nagar, Apele Road, Second Floor, Room No. 9, Dombvil (E), Dist. Thane.	01/06/77	8 th std		-	Holball	Fit	5	Yes	
47.	Mr. Vasant Krishna Pagi.	P. O. Vadeghar, Mogare Chawl, Room No 1, Behind Marathi School	01/06/65	9 th std Pass		A+		Fit	5	Yes	
48.	Mr. Bhiva V. Karbhari.	Omn House, Ghandhari Gaon, Kalyan Nashik Road, Kalyan, Dist. Thane.	01/06/54	2 nd std Pass		-		Fit	4	Yes	
49.	Mr. Shantaram K. Patil.	Adharwadi Jail Road, P. O. Umberde, Near Shankar Mandir Umberde, Kalyan (W), Dist. Thane.	01/07/53	4 th std Pass		B+		Fit	14	Yes	
50.	Mr. Kaka S. Patil.	Omn House, Umberde Gao, Jail Road, Tal. Kalyan, Dist. Thane 421 301.	01/09/56	6 th std Pass		B+	Civil defense Mumbai	Fit	6	Yes	
51.	Mr. Dasharath K. Gaikwad.	Bhagyoday Park, Room No. 3 Ground Floor, 'C' Wing Chikanghar, Birta College Higway, Kalyan (W), Dist. Thane.	01/06/54	9 th std Pass		O+		Fit	4	Yes	
52.	Mr. Ratilal A. Koli	Dream Complex , B-1/104, Kalyan Bhiwandi Road Kongaon, Kalyan, Dist. Thane.	01/06/66	10 th std Pass	NFTC Mumbai	A+	III electrician course pass	Fit	6	Yes	
53.	Mr. Jagan G Amle	02, Shriji Darshan Building, Ground Floor, Ghandhari Gao, Kalyan Nashik Higway, Kalyan (W), Dist. Thane.	20/09/61	10 th std Pass		A+		Fit	5	Yes	2005
54.	Mr. Sanjay G. Ambekar	301, Om Anantkrupa CHS, Ghodetkot Ali, Agra Road, Kalyan (W), Dist. Thane.	17/05/65	H.S.C.	SFTC Mumbai Sub officer NFSC Nagpur	A+	National security force	Fit	4	Yes	1994

Sr. No.	Name	Local Address	Date Of Birth	Education	Name of The Completed Course Name of The Institution	Blood Group	Extra Curricular Activity	Physical Fitness (Serious Illness)	No. of Family Members	Member of Welfare Association	Year of Blood Donation
55.	Mr. Suhass P. Kulkarni	Nav Annapurna Aarati CHS, B-5 No. 11, Annapurna Nagar, Kalyan (W), Dist. Thane.	15/08/57	11 th std Service graduate		O+	Maji sairik	Fit	3	Yes	
56.	Mr. Narayan L. Jadhav	Sahyadri Nagar 1, Chawl B -10, Room No 12, Near Birla School, Kalyan (W), Dist. Thane.	01/07/57	S.S.C. Service graduate	Ex army tractor mechanic ITI	O+	Maji sairik	Fit	4	Yes	1986
57.	Mr. Anant V. Shekar.	Govindvadi Road, Near Ganapati Mandir, Koli Wada, Kalyan (W), Dist. Thane.	15/04/70	B.A.		A+		Fit	5	Yes	1990
58.	Mr. Pramod K. Kolte.	Shri Krupa Tower, Room No. 204, Rambaug Lane 4, Kalyan (W), Dist. Thane.	01/06/64	11 th std Pass	NCTVT , ITI Maintenance M/C Ambar Nath	-		Fit	4	Yes	
59.	Mr. Satish V. Mankame.	Shri Sidheyashwar CHS, B/803. Sidheyashwar Ali Parmaka, Kalyan (W), Dist. Thane.	10/09/71	12 th std commerce Pass		B+	Motor winding course, typing 30 marathi 30 hindi 40 english	Fit	5	Yes	1995 2000
60.	Mr. Sanjay G. Mhaske.	6/2, Anjali Apartment Opposite Sai Hall, Birla College Road, Khadkpada Kalyan (W), Dist. Thane.	20/06/70	12 th std Pass art		A+		Fit	4	Yes	2006 2009
61.	Mr. Rajaram N. Gaikar.	P. O. Kolimb, Tal Kalyan, Post. Manmoli, Kalyan, Dist. Thane.	26/07/67	9 th std Pass		O+		Fit	6	Yes	
62.	Mr. Vinit V. Katkar.	33/3, Orbit CHS, Pawarnichapada, Highway Road, Kalyan (W), Dist. Thane.	26/06/84	B.A.		B+	Third at All India weight lifting competition	Fit	2	Yes	
63.	Mr. Kashav K. Pagi.	P. O. Wadeghar, Behind Ganeshpuram Building, Anant Patil Chawl, Room No. 3, Kalyan Wadeghar, Kalyan (W), Dist. Thane.	06/05/71	9 th std Pass		A+		Fit	5	Yes	

Sr. No.	Name	Local Address	Date Of Birth	Education	Name of The Completed Course Name of The Institution	Blood Group	Extra Curricular Activity	Physical Fitness (Serious illness)	No. of Family Members	Member of Welfare Association	Year of Blood Donation
64.	Mr. Rouf H. Shamle.	Taj Sau Bardan Galli, Third Floor, Kalyan (W), Dist. Thane.	13/07/69	10 th std Pass		A+	Cricket Sportman	Fit	6	Yes	
65.	Mr. Nandukumar R. Shenkar.	Om Swami Samarth CHS 2/10, Khadakapada, Kalyan (W), Dist. Thane.	21/04/76	B.A.		B+	NCC Kabbadi & refoy	Fit	5	Yes	25 times
66.	Mr. Dadasaheb C. Yadav.	3, Harshad Niwas, Opposite Balaji Mandir, Sagari Road Dombivi (E), Dist. Thane.	01/06/58	H.S.C.	Security and fire fighting course	O+	Maji saNIK	Fit	6	Yes	1998
67.	Mr. Balaram Bhiva Mhatre.	P. O. Dwarli, Taluka Ambar Nath, Dist. Thane.	01/05/56	7 th std Pass		O-		Fit	4	Yes	
68.	Mr. Subhash Baburao Bhor.	Shri Santram Maroti Chawk, Pathi Chawl, Dudh Naka, Kalyan, Dist. Thane.	21/11/71	S.S.C.		AB-		Fit	3	Yes	
69.	Mr. Anand Sayaji Oihal.	Near F Cabin, Milind Nagar, Katemanivi, Kalyan (E), Dist. Thane	06/06/66	S.S.C.		O+		Fit	5	Yes	
70.	Mr. Sammy Vishnu Bhagare.	Said Ham Apartment, 3/10, Wing 3, Birla Bhiwandi Highway, Khadkpada Kalyan (W), Dist. Thane.	01/01/84	T.Y.B.Com.		O+	Cricket	Fit	5	Yes	
71.	Mr. Vijay Dhondba Patil	Vaishvani Apartment, A Wing, First Floor, Block No. 1, Katemanevalli Kalyan, Dist. Thane.	05/04/72	11 th std Pass		O+		Fit	5	Yes	
72.	Mr. Jagdish Ragnurath Purkar	Sita Apartment, B Wing, Room No. 3, Ayodhya Nagar, Mirgaon, Kalyan (E), Dist. Thane.	09/01/65	10 th std Pass		-		Fit	3	Yes	
73.	Mr. Nabab Nadar Tadvi	Kokan Vasahat, MIG 1,48/889, Kalyan (W), Dist. Thane.	01/06/68	H.S.C.		B+		Fit	4	Yes	
74.	Mr. Sanjay Shivaji Sarode	Anita Colony, Nana Pawashe Chauk, Kalyan (E), Dist. Thane.	14/02/76	S.S.C.		B+		Fit	3	Yes	
75.	Mr. Savhiram Deoram Bhusare	Maui Krupa CHS, Shrimangal Road, Nandivi, Kalyan (E), Dist. Thane.	03/01/77	S.S.C.		A+		Fit	6	Yes	

Sr. No.	Name	Local Address	Date Of Birth	Education	Name of The Completed Course Name of The Institution	Blood Group	Extra Curricular Activity	Physical Fitness (Serious Illness)	No. of Family Members	Member of Welfare Association	Year of Blood Donation
76.	Mr. Ashwani Avun Patral.	A/5, 203 Gagangiri Endave, Khadkapada, Kalyan (W), Dist. Thane.	17/11/72	B.Com.		O+		Fit	4	Yes	
77.	Mr. Bandu Yeshwant Sahare.	Baban Patil Chawl, Kansai Gao, Ambarnath (E).	01/06/73	12 th std Pass		B-		Fit	5	Yes	
78.	Mr. Bhagwan Attaram Patil.	Near Birla College Road, Behind Mangal Murthi CHS, Chikanghar, Kalyan, Dist. Thane.	15/08/68	10 th std Pass		O+		Fit	5	Yes	
79.	Mr. Suresh Laddu Gaikar.	Mhatre Chawl No. 2, Room No. 4, Mangal Sadhu Nagar, Kalyan, Dist. Thane.	01/06/69	10 th std Pass		B+		Fit	4	Yes	
80.	Mr. Sachin Eknath Pawar.	Laxmi Narayan Colony, Thankar Pada, Agra Road, Kalyan (W), Dist. Thane.	17/06/81	9 th std Pass		-		Fit	4	Yes	
81.	Mr. Alan De oza.	Charu Bala Nivas, Bangali Camp, Kosewadi, Kalyan (E), Dist. Thane.	27/10/81	S.Y.B.A.		O+	Kabballi National player	Fit	1	Yes	
82.	Mr. Pandit Govind Mhatre.	Mauli Krupa Bungalow , Chinchpada Kalyan (E), Dist. Thane	17/07/55	5 th std Pass		-		Fit	7	Yes	
83.	Mr. Manik R. Aher.	A – 309, Siddhivinayak Residency, Opposite Tata Power House, Kalyan Shil Road.	01/04/54	6 th std	Home guard S.F.T.C. Mumbai	B+	Swimming Caram Reading	Fit	4	Yes	1990 1991
84.	Mr. Ragunath A. Chaudhari.	Shankar Nagar, Sonarpada, Kalyan Shil Road, Dombivli (E), Dist. Thane	01/06/66	-		A+	Swimming	Fit	4	Yes	
85.	Mr. Balu Babu Govari.	Shri Jalinder Patil Chawl, Dawadi Gao, Kalyan Shil Road, Dombivli (E), Dist. Thane.		B.A. Marathi Literature	S.F.T.C. Mumbai N.F.S.C. Nagpur	AB+	Holball Cricket Khokho Kabballi Running Reading	Fit	6	Yes	

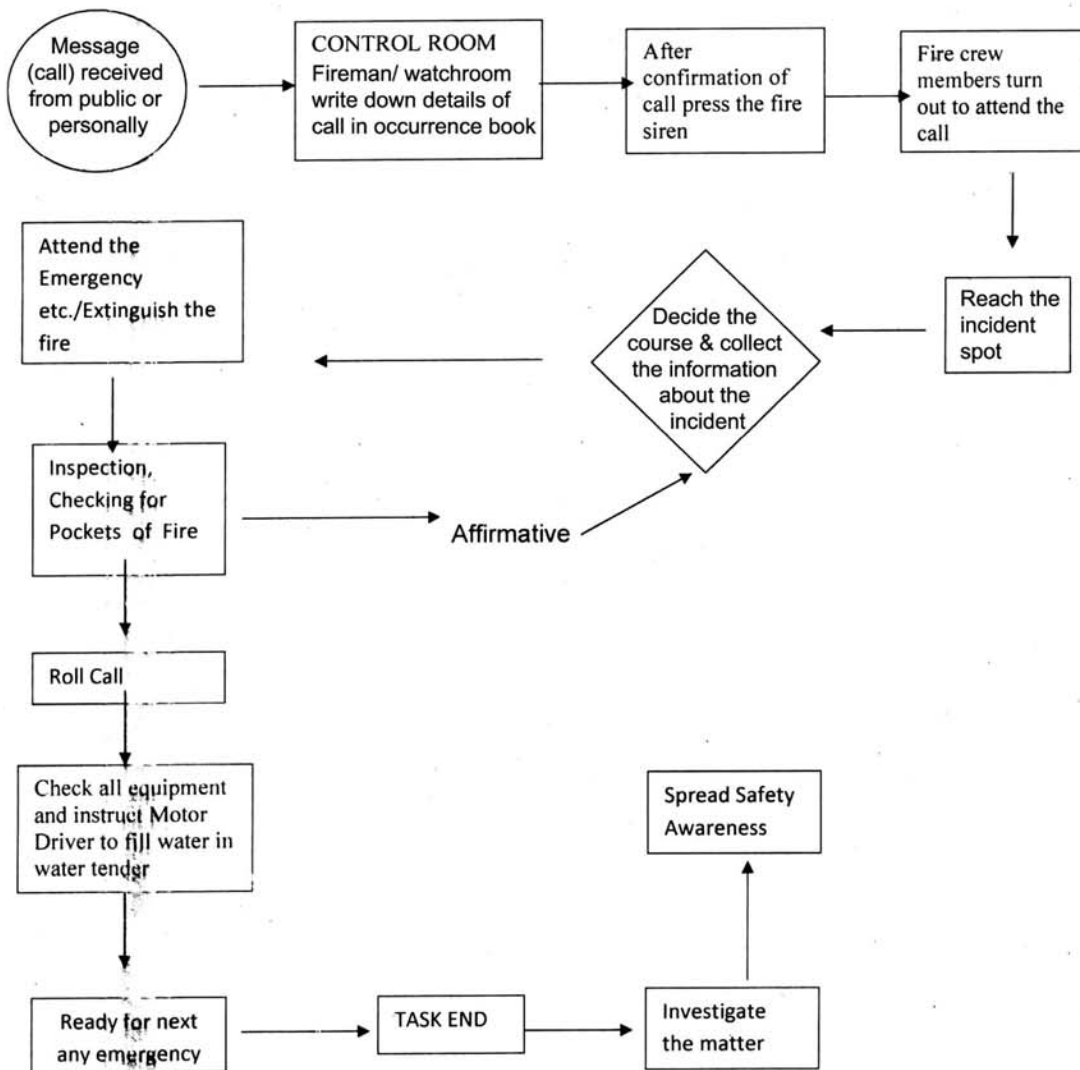
Sr. No.	Name	Local Address	Date Of Birth	Education	Name of The Completed Course Name of The Institution	Blood Group	Extra Curricular Activity	Physical Fitness (Serious Illness)	No. of Family Members	Member of Welfare Association	Year of Blood Donation
86.	Mr. Balu Ananda Bhangre.	Harichandra Krupa Building, Kalyan Shil Road, Opposite Techno Petrol Pump, Dombivli (E), Dist. Thane.	02/06/63	H.S.C.		AB+	Caram Traveling	Fit	7	Yes	
87.	Mr. Sadu Bhiva Padi.	Kalyan Pavitra Dham Building, First Floor, Room No. 13, Opposite RTO Kalyan (W), Dist. Thane.	01/06/69	10 th std Pass	SFTC Mumbai	A+	Holball Caram Swimming	Fit	5	Yes	
88.	Mr. Anant D. Rane.	Jai Mataji, Shri CHS, Ground Floor, Room No. 8, Gaytrinagar, Katrap Road, Badlapur (E), Taluka Ambarnath, Dist. Thane.	08/10/74	12th std		O+		Fit	3	Yes	2007
89.	Mr. Maruti Khilari.	304, Vithai Krupa CHS, New Ayre Road, Opposite Sai Baba Palace, Dombivli (E), Dist. Thane.	15/06/68	B.Com.		B+	Human behavioral study All India Local Social Government Mumbai Health Inspector diploma		5	Yes	1998 2005 2008 2009
90.	Mr. Bhajchandra L. Waghare.	Adharwadi Jal Road, Behind Lulla Compe, Pashuram Wadi, Kalyan (W), Dist. Thane.	24/01/70	9 th std		B+		Fit	5	Yes	
91.	Mr. Gopal Thakore.	1/6, Mangeshi Park, Mhasoba Nagar, Umberde Gao, Opposite MuthCollege,Kalyan(W),Dist. Thane.	30/04/73	11 th std		-		Fit	4	Yes	
92.	Mr. Vinayak Lokhande.	4/2, Shrikrushna CHS, Behind HP Gas Godown, Birla College Road, Chikanghar.	03/11/85	H.S.C.		AB+	MS-CIT	Fit	3	Yes	2007
93.	Mr. Dattaprasad R. Rane.	Ganesh Krupa CHS, Davadi Road, Golavli, Dombivli (E), Dist. Thane.	05/10/83	H.S.C.		A+	MS-CIT	Fit	2	Yes	2008 2009

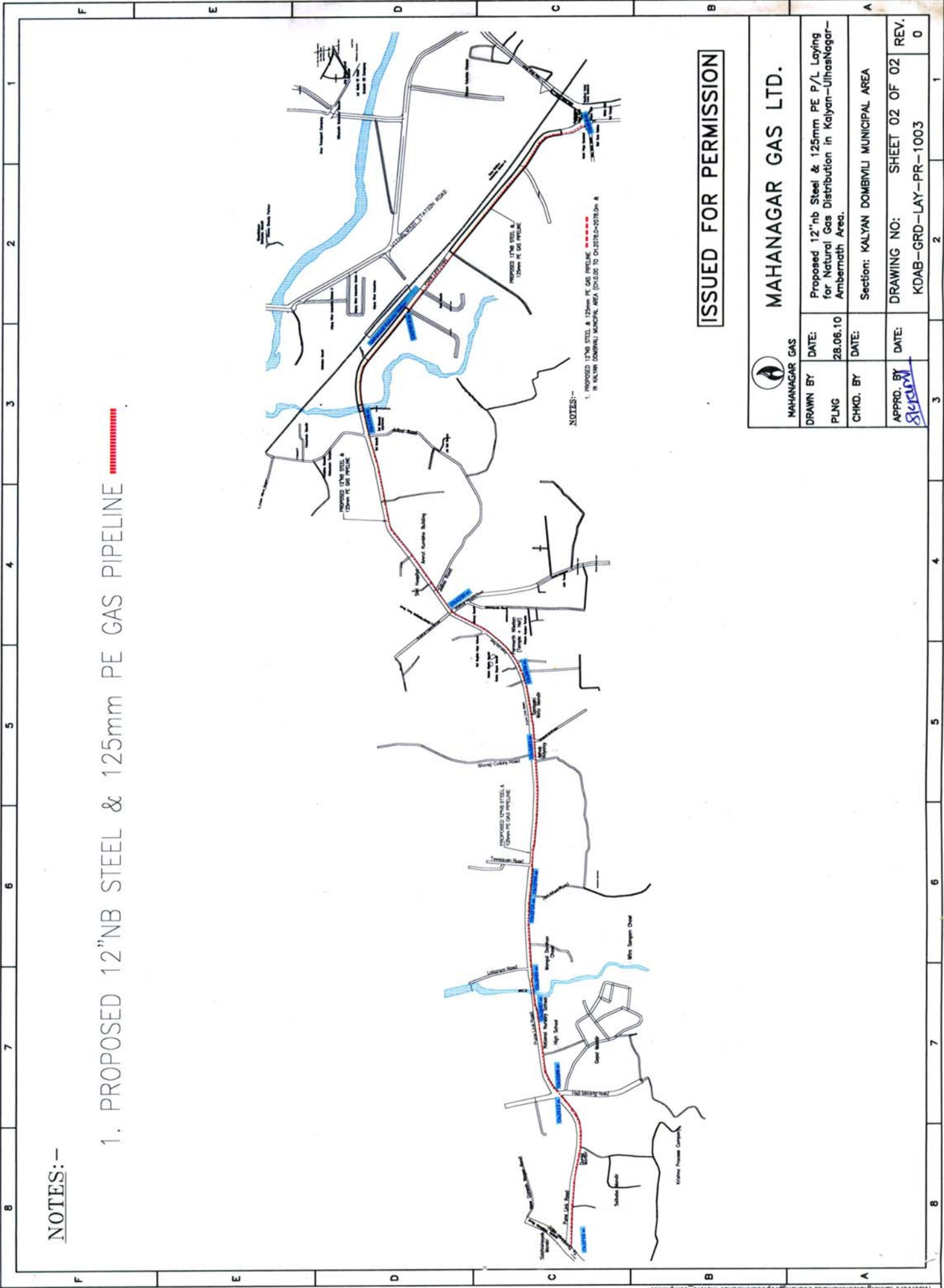
Sr. No.	Name	Local Address	Date Of Birth	Education	Name of The Completed Course Name of The Institution	Blood Group	Extra Curricular Activity	Physical Fitness (Serious Illness)	No. of Family Members	Member of Welfare Association	Year of Blood Donation
94.	Mr. Santosh V. More.	Abhang, Survey No. 132 /3 A, Gurudwara Chowk, Bhalekar Wadi Road, Chinchwad, Pune 33191172.	09/11/72	10 th std Pass		AB+	Wireman license III Ambarnath plastic board maker PWD	Fit	4	Yes	2006 2007 2008
95.	Mr. Ghansham B. Gosavi.	Govasi Wada, Beturkar Pada, Opposite Panchmukhi (Maruti) Hanuman Mandir, Kalyan (W), Dist. Thane.	11/05/64	B.A.		A	MS-CIT Traveling	Fit	4	Yes	
96.	Mr. Vasant Mudliar.	A/4, Sadichha CHS, Padmakar CHS , Bara Bungla Road, Thakurli (E).	09/01/87	12 th std Pass		AB+	MS-CIT Caram	Fit	3	Yes	
97.	Mr. Gyanba Patil.	Aish CHS, Room No. 10, Third Floor, Near Nikki Nagar, Kalyan, Dist. Thane.	02/03/54	12 th std Pass		O+	Caram	Fit	4	Yes	
98.	Mr. Mustak Makandar.	44/15, Sureya Manzil, Khatti Mitthi Lane, Near Lucky Cycle, Vartak Road, Kalyan (W), Dist. Thane.	26/04/67	12 th std Pass		B+	CISF fireman course 76 FSTI Devil Rajasthan	Fit	4	Yes	1995
99.	Mr. Rajesh R. Bhagat.	Bhagat Nivas, Near Baban Kirana Store, P. O. Sapad, Tal. Kalyan, Dist. Thane.	01/03/79	B.A.		O+	Restling Caram	Fit	5	Yes	
100.	Mr. Sushil Deshpande.	Raghuvir Nagar, Shinde Building, Room No. 1, Dombwli (E), Dist. Thane.	09/12/74	10 th std Pass		AB-		Fit	2	Yes	
101.	Mr. Dattatrey Jagannth Khinrar.	204, Prathmesh Apartment, Pokharkar Nagar, Manjarli, Badlapur (W).	04/07/61	B.Com.	S.F.T.C. Mumbai	AB+	Kabhadri Caram Cricket Holball	Fit	5	Yes	1978 1993
102.	Mr. Bharat Kushaba Ghode.	8/306, Sidhywinayak Residency, Tata Power House, Kalyan Shil Road, Dombwli (E), Dist. Thane.	01/06/66	H.S.C.	S.F.T.C. Mumbai	O+		Fit	4	Yes	

Sr. No.	Name	Local Address	Date Of Birth	Education	Name of The Completed Course Name of The Institution	Blood Group	Extra Curricular Activity	Physical Fitness (Serious Illness)	No. of Family Members	Member of Welfare Association	Year of Blood Donation
103.	Mr. Dattatrey Bihvaji Shelke.	C – 301, Siddhyvinayak Residency, Tata Power House, Kalyan Shil Road, Govli, Dombivli (E), Dist. Thane.	01/06/67	B.Sc.	Sub officer N.F.S.C. Nagpur	B+	Caram Holball	Fit	5	Yes	
104.	Mr. Parshuram Medhekar.	B-301, Gopal Baug, Sunil Nagar, Behind DNC School, Dombivli (E), Dist. Thane.	01/06/60	H.S.C.	S.F.T.C. Mumbai	A+	Caram Cricket Holball	Fit	3	No	2004
105.	Mr. Prakash Vinayak Gaikwad.	E/67, Navsai Prasad CHS, New Apte Road, Dombivli (E), Dist. Thane.	16/11/68	S.S.C.		O+	Caram Cricket Kabbadi	Fit	5	Yes	5 yrs back
106.	Mr. Ashok Dhivar.	Mahesh Apartment, Patharfi Road, Opposite Nana Garage, Dombivli (E), Dist. Thane.	01/06/73	12 th std Pass		A+	Caram Foot ball	Fit	3	Yes	2009
107.	Mr. Nitin Ramesh Sawant.	Shashikant Patil, B-2, Second Floor, Shop No. 11, Near Ram Mandir, Shastri Nagar, Dombivli (W), Dist. Thane.	07/03/74	12 th std Pass		B+	Caram Cricket Holball	Fit	2	Yes	Yes
108.	Mr. Shantilal Ragho Aher.	Drim Complex, D Wing, Room No. 204, Kalyan Bhiwandi Road, Near New Bridge, Kon, Taluka Bhiwandi, Dist. Thane.	30/09/68	S.S.C.		B+	Caram Cricket Holball Caram	Fit	5	Yes	
109.	Mr. Jaiwant Shitole.	Opposite Shiva Krishan Stores, Hanuman Mandir, Buvapada, Ambarnath (W), Dist. Thane.	09/04/64	H.S.C.		O+	Caram	Fit	5	Yes	
110.	Mr. Nanasahab Murlihar Chavan.	Dattakrupa Tower, Ganeshnagar, B-301, Near Shantaram Tower, Dombivli (W), Dist. Thane.	01/06/61	S.S.C.		B+	Holball Caram	Fit	2	Yes	
111.	Mr. Ashok Baliram Bagade.	Rahul Nagar, Block No. 288, Near Dharmvir Sambhaji Chawk, Behind Shwasa Dagadi Shakhia, Ullasnagar – 4 (E), Dist. Thane.	10/10/57	9 th std Pass		B+		Fit	3	Yes	

Sr. No.	Name	Local Address	Date Of Birth	Education	Name of The Completed Course Name of The Institution	Blood Group	Extra Curricular Activity	Physical Fitness (Serious Illness)	No. of Family Members	Member of Welfare Association	Year of Blood Donation
112.	Mr. Shivaji Mhatre	P. O. Dwarfi Gaon, Shri Malang Road, Durvas, Bhoir Chawl, Kalyan (W), Dist. Thane.	02/06/67	10 th std fail		B+	Kabbadi Cricket Holtball	Fit	2	Yes	2004
113.	Mr. Daji Sambhaji Kadam.	Vihabai Nivas, 4/25, Shastri Nagar, Kopar Road, Dombivli (W), Dist. Thane.	16/03/64	10 th std fail		OB+	Kabbadi Cricket Holtball	Fit	5	Yes	2007
114.	Mr. Prakash Popat Shinde.	Ghar No. 3427, Khutavali, Vardhapada, Ganesh Nagar, Amarnath (W), Dist. Thane.	17/04/84	12 th std Pass		0	Kabbadi Cricket	Fit	5	Yes	
115.	Mr. Bablu Vyapari.	Dhakali Nivas, DNC Road, Dattanagar, Dombivli (E), Dist. Thane.	18/08/84	12 th std Pass		A+		Fit	4	Yes	
116.	Mr. Pandit U. Karbhari.	Own House, Kolivi Gaon, Near Adhanwadi Jali, Kalyan (W), Dist. Thane.	01/06/54	2 nd std Pass		O+			-	No	

ANNEXURE 3: SOP FOR ATTENDING EMERGENCY.





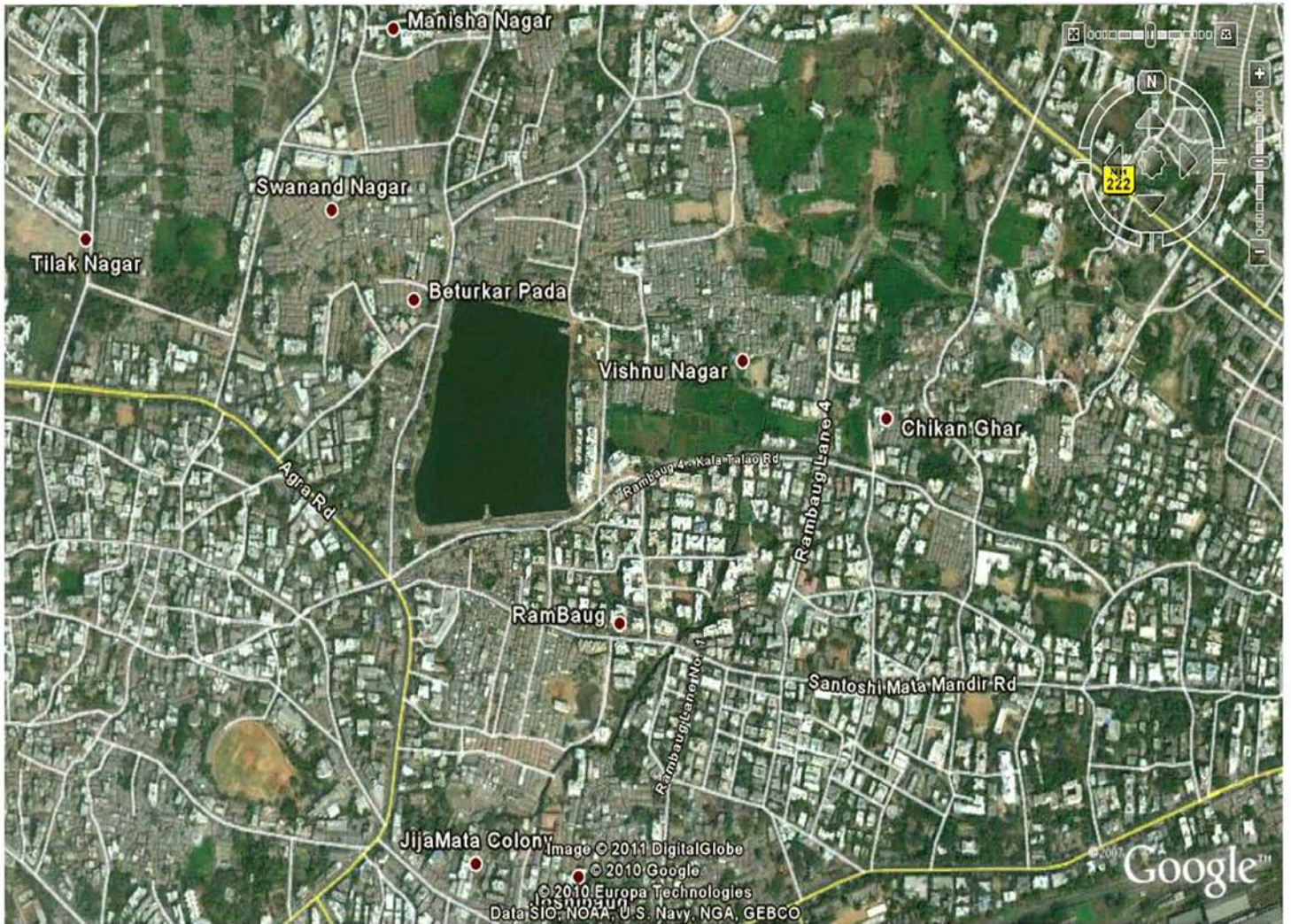
NOTES:-

1. PROPOSED 12"NB STEEL & 125mm PE GAS PIPELINE

NOTES:-
 1. PROPOSED 12"NB STEEL & 125mm PE GAS PIPELINE IN KALYAN DOMBIVI MUNICIPAL AREA (SUBJECT TO DISTRIBUTION & ...)

ISSUED FOR PERMISSION

MAHANAGAR GAS	
DRAWN BY PLNG	DATE 28.06.10
CHKD. BY	DATE
APPRD. BY <i>S. K. Kulkarni</i>	DATE
MAHANAGAR GAS LTD.	
Proposed 12"nb Steel & 125mm PE P/L Laying for Natural Gas Distribution in Kalyan-UlhasNagar-Ambernath Area.	
Section: KALYAN DOMBIVI MUNICIPAL AREA	
DRAWING NO:	SHEET 02 OF 02
REV.	0



[Kalyan hotels - sortable list of all Kalyan hotels](#)

<p>Search for hotels in Kalyan, India</p>	<p>Check-in date 16 11 2010</p> <p>Check-out date 17 11 2010</p>	<input type="button" value="Search"/>
--	--	---------------------------------------

Kalyan hotels: low rates, no booking fees, no cancellation fees.

Maplandia.com in partnership with Booking.com offers *highly competitive rates* for all types of hotels in Kalyan, from affordable family hotels to the most luxurious ones. Booking.com, being established in 1996, is longtime Europe's leader in online hotel reservations.

At Maplandia.com you won't be charged any booking fees, cancellation fees, or administration fees – the reservation service is *free of charge*. The reservation system is *secure* and your personal information and credit card is encrypted.

We have put together also a carefully selected list of recommended hotels in Kalyan, only hotels with the highest level of guest satisfaction are included.

Kalyan hotels map

The location of each Kalyan hotel listed is shown on the detailed zoomable map. Moreover, Kalyan hotel map is available where all hotels in Kalyan are marked. You can easily choose your hotel by location.

Kalyan hotel reviews

Many photos and *unbiased Kalyan hotel reviews* written by real guests are provided to help you make your booking decision.

Kalyan hotel deals

Luxury hotels (including 5 star hotels and 4 star hotels) and cheap Kalyan hotels (with best discount rates and *up-to-date hotel deals*) are both available in separate lists. Always bear in mind that with Maplandia.com and Booking.com the best price is guaranteed!

Hotels nearest to the centre of Kalyan

[The Executive Inn](#) *** (in [Mumbai](#), distanced approximately 21 km)