



CONTENTS

LIST OF TABLES	5
1 EXECUTIVE SUMMARY	6
2 BRIEF OVERVIEW	7
3 PROFILE OF PIMPRI CHINCHWAD	8
3.1 History of PCMC	8
3.2 Location and linkages	8
3.3 Physical features	9
3.3.1 Geography	9
3.3.2 Climate and Rainfall	10
3.4 Demography	10
3.4.1 City and Population Growth Trends	10
3.4.2 Population Density	11
3.4.3 Other demographic indicators	11
4 INSTITUTIONAL SETUP OF FIRE FIGHTING	12
4.1 Organisation Structure	12
4.2 Fire Approvals for Building Permission	12
4.3 Financial Support for Fire Services	13
4.4 Response of Fire Department in Emergency	14
4.4.1 Method of Messages	14
4.4.2 Action - Duty Officer	14
4.4.3 Action - Fire Officer	15
4.4.4 Action - Fire Control Room (After vehicles are deployed)	15
4.4.5 Action - Senior Officers	16
4.4.6 Action - At Fire Head Quarter	16
4.4.7 Action - On the way to call	16
4.4.8 Action - At place of incident	16
4.4.9 Action - Situation under control	17
4.4.10 Action - Service officers	17
4.4.11 Action - On return to station	17
5 FIRE RISK MAPPING	18
5.1 Building Material Type	18



5.1.1	Factor Output	18
5.2	Fire Sources	21
5.2.1	Factor Output	21
5.3	Fire Fighting Scenario	23
5.3.1	Factor Output	23
5.4	Electrical Wiring System	24
5.4.1	Factor Output	24
5.5	Fire history of the area	25
5.5.1	Factor Output	25
5.6	Building Density	26
5.6.1	Factor Output	26
5.7	Accessibility of the area	27
5.7.1	Factor Output	27
5.8	Fire Hazard Zones	28
5.8.1	Risk Factors output	28
5.9	Summarization	29
6	PCMC'S FIRE OCCURANCES DETAIL.....	30
7	FIRE HAZARDS RESPONSE MITIGATION PLAN.....	32
8	FUNDS REQUIREMENT.....	71
8.1	Equipments Requirement.....	71
8.1.1	Equipment for Headquarter and Divisional Stations.....	71
8.1.2	Equipment for Fire Stations.....	73
8.2	Structure Requirement.....	74
8.3	Manpower Requirement.....	75
8.4	Existing Situation of Fire Services at PCMC.....	77
8.4.1	Existing Fire Fighting Equipments.....	78
8.4.2	Other Equipment.....	78
8.4.3	Existing Structure and Facilities	80
8.4.4	Existing Manpower	81
8.5	GAP Analysis & Funding Requirement.....	81
8.5.1	Physical Infrastructure.....	82
8.5.2	Disaster Management Cell.....	85
8.5.3	Fire Prevention Cell.....	85



8.5.4	Technical and Administrative Staff	85
8.5.5	Summary of Financial Expenditure.....	87



LIST OF TABLES

Table 1: Growth in Population of Pimpri Chinchwad	10
Table 2: Population Density of the City.....	11
Table 3: Year wise revenue generated by Fire Department.....	13
Table 4 : Fire Risk Factor - Building Material Scorecard	18
Table 5: Populated Slum pocket details.....	19
Table 6: Fire Risk Factor – Fire Sources Scorecard.....	21
Table 7: Fire Risk Factor - Fire Fighting Scenario Scorecard.....	23
Table 8: Fire Risk Factor - Electrical wiring System Scorecard.....	24
Table 9: Fire Risk Factor - Fire History Scorecard.....	25
Table 10: Fire Risk Factor - Building Density Scorecard	26
Table 11: Fire Risk Factor - Accessibility of the area Scorecard	27
Table 12: Year wise Fire Call Statistics of Fire Department	30
Table 13: Month wise Fire Call Statistics of Fire Department.....	30
Table 14: City's Central Fire Station Equipment Requirement	71
Table 15: City's Fire Station Equipment Requirement.....	73
Table 16: Fire Station Manpower requirement.....	75
Table 17 : Existing Fire Appliances with Fire Department	78
Table 18: Other equipments of the Fire Department	78
Table 19: Fire Stations at Pimpri Chinchwad.....	80
Table 20: Fire Service Facility with Companies at Pimpri Chinchwad.....	80
Table 21: Manpower of Fire Department	81
Table 22: Funding details of Fire equipments.....	83
Table 23: Additional Manpower requirement	85
Table 24: Fund Requirement summary	87



1 EXECUTIVE SUMMARY

Pimpri Chinchwad being the centre for many manufacturing industrial units is highly prone to fire hazard. The impact of such fire can be massive both related economic and human life due to the presence of highly flammable materials in industries. Based on the fire calls history, it is known that the majority of the fire calls are from the industrial unit areas of the city and preferable in the region on unauthorised construction area of Chikli. The vulnerability in the industrial region is higher due to the presence of chemical industries. The city has 72 slum habitations mostly around the industries, which increases the vulnerability of the fire hazard, since the building material is mostly woods and sheets in the slum area.

The city has three rivers flowing through its area and during monsoon season, number of flood related calls has to be catered by the Fire department, since it is the only emergency response department for the city.

In order to combat fire/emergency, the fire department can also takes assistance from other authorities like INS Shivaji (Navy), Collage of Military Engineering, Bombay Engineers Group (Bombay Sappers), Civil Defence, Home Guard. However, such assistance during emergency causes a delay and therefore it is important to strength the existing fire system. Also, there is no coordinated approach because each helping authorities operates independently.

The existing fire fighting equipments are inadequate to respond to the risk posted in the city. It is highly understaffed and the infrastructure facility is very old for quick response. It is the sheer experience of the existing staff and there efforts that despite of the low manpower and fire infrastructure, the city is still able to control and manage any major disaster.

This proposal, therefore proposes to increase the fire stations from existing 4 to 15 and up gradation of equipments and infrastructure at the fire station. State intervention is required for increasing the manpower to match the infrastructure created. The up gradation plan has been worked out based on SFAC guidelines and some changes in equipment and manpower has been done based on the experience of managing the services in the city and geographical demand of the area. The overall cost of up gradation as on date is Rs 158.93 crores and is proposed to be implemented over a period of 6 years. We however, have not taken into factor the cost escalation that will occur during the implementation period. The up gradation is designed based on the current risk profile of the city and its population. From our experience of managing fire services, we are confident that with the new fire system, fire and other hazards is manageable for a population of 2030.



2 BRIEF OVERVIEW

During 1971, the Pimpri Chinchwad Fire Brigade was established, at the time when PCMC was Navnagarपालिका. It had One Petrol DODGE fire appliance with fire staff strength of less than 10. The first Fire station was situated at the KSB Pumps Ltd. premises on Mumbai Pune road, Pimpri. In 1980, two more fire appliances were added with a total strength raised to twenty employees. By 1986, the fleet of fire appliances reached eight, inclusive of a rescue van. The strength included a Fire officer, a station office and almost 40 fire fighters. In 1990, four more fire vehicles were added, also the total strength of the employees reached up to 70. Two more fire stations, one at Bhosari and another at Pradhikaran, were started with a recruitment of 2 officers and 40 employees. The year 2001 had remarkable change in the development of the Fire Brigade by the addition of one more Fire Station at Rahatni with five more advance fire vehicles equipped with modern equipments having a well-trained strength.

Despite of the fact that the department is lacking in basic infrastructure, manpower & equipments the department is striving hard to combat with the challenging needs of the fast growing city on administrative-techno aspects. The Fire Service of PCMC is a Centre of Local Crisis Group No. 2 of the Chemical Accidents Emergency Preparedness and Mitigation Plan of Factory Inspectorate. There are 10 major accident hazard companies in PCMC limits.

The department also conducts various indoor and outdoor Training programmes and Demonstrations for educational institutions, commercial centres, industries, petrol pumps, private bodies and other organizations.



3 PROFILE OF PIMPRI CHINCHWAD

3.1 History of PCMC

Pimpri-Chinchwad is situated towards the northeast of Pune and 160 km. from Mumbai. The city of Pimpri-Chinchwad is predominantly an industrial area, which has developed largely during the last four decades. Pimpri Chinchwad is a relatively newly developed urban area of Pune city. Pimpri was basically established as a centre for refugees from Pakistan. Industrialisation in Pimpri area commenced with the establishment of Hindustan Antibiotics Limited in 1956. The establishment of the Maharashtra Industrial Development Corporation (MIDC) in 1961-62 considerably facilitated industrial development in the area. The establishment of large-scale core industries has led to the growth of ancillary and small-scale industries in and around this industrial belt. With each passing year, the landscape saw significant changes, long stretches of farmland giving way to clusters of enclosed factory campuses.

3.2 Location and linkages

Pimpri-Chinchwad being an extension of Pune enjoys the excellent connectivity that Pune has. The city is well connected by road, rail and air to almost all-important cities in India including the most important cities in India like Mumbai, Hyderabad, Bangalore, Delhi, Kolkatta and Chennai. Pune suburban trains also run from Pune Junction to Pimpri-Chinchwad. Pune now has an international-deemed airport, with flights to Singapore and Dubai. Domestic flights are available to most metropolitan cities in India. Pimpri-Chinchwad is situated along the National Highway, NH-4 leading to Mumbai.

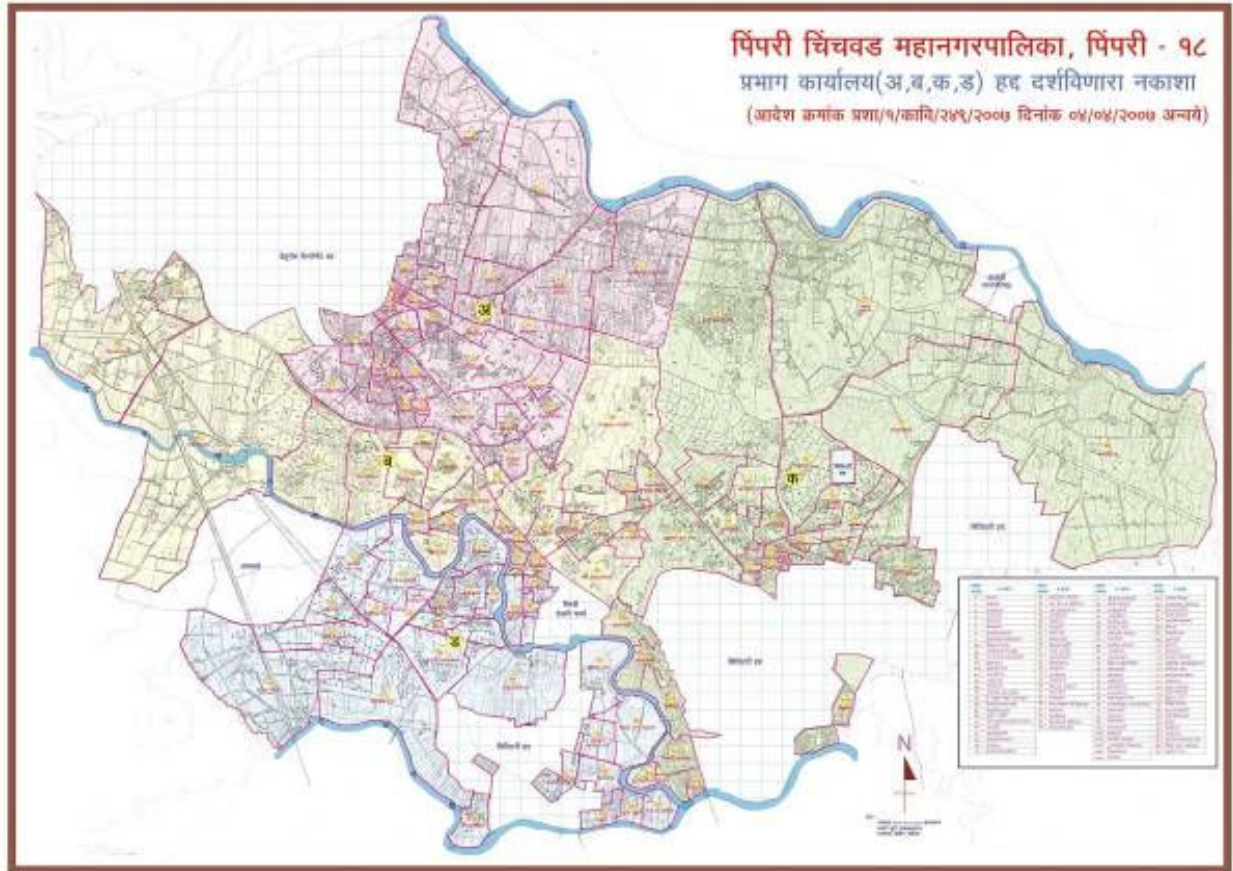


Figure 1 : Boundary Map of Pimpri - Chinchwad

3.3 Physical features

The city of Pimpri Chinchwad has three major rivers and its tributaries flowing through its jurisdiction. The city is bordered by Mula and Indrayani River, which form its Southern and Northern boundaries respectively. The Pavana River passes through the centre of the city and is the source of raw water to the city's water supply system.

3.3.1 Geography

The city of Pimpri-Chinchwad is situated near the western margin of the Deccan Plateau on the leeward side of the Sahyadri ranges and Western Ghats, 560 m above sea level, on the banks of the rivers Mula, Pawana and Indrayani.

The city lies in the seismically active zone of Koyna Region, which is about 100 km. south of Pune. The region has recently been upgraded to lie in zone III, which is the third most dangerous seismic zone in India. Consequently, the area has experienced some moderate-intensity and many low-intensity earthquakes. Although earthquakes were not known to have originated in the cities of Pune or Pimpri-Chinchwad, an earthquake of a very slight intensity took place in Pune with its epicentre in Dehu.



3.3.2 Climate and Rainfall

Pimpri-Chinchwad experiences three distinct seasons: summer, monsoon and winter. Typical summer months are from March to May, with maximum temperatures ranging from 35 to 39°C (95 to 102°F). Contrary to most of the Deccan Plateau where May is the warmest month, the warmest month in Pimpri-Chinchwad is April. The city often receives locally developed heavy thundershowers with sharp downpours in May. Though the temperatures plunge in this month, the summer heat accompanied by high humidity can be occasionally quite oppressive. Nevertheless, the nights are significantly cooler compared to most other parts in this region owing to its high altitude. The cities of Pune and Pimpri-Chinchwad receive moderate rainfall, an annual average of 722 mm., mainly between June and September as the result of southwest monsoon. July is the wettest month of the year. The weather is very pleasant in the city with average temperatures ranging from 20 to 28°C (68 to 82°F). The cities experiences winter from November to February -- pleasant windy days, clear skies and cool nights make it the most enjoyable time of the year. The day temperature hovers around 29°C (84°F) while night temperature is below 10°C (50°F) for most of December and January, often dropping to 5 or 6°C (42°F). On particularly cold days, the wind may appear to be very chilly due to the dryness of air. Rain is very rare in this season.

3.4 Demography

The setting up of industrial campuses by leading industrial conglomerates in mid 1960 has fuelled the development of the Pimpri-Chinchwad Municipal Corporation. The urban development of Pimpri-Chinchwad has happened almost entirely along the old Bombay-Pune highway. Civic amenities like shopping complexes and hospitals are also situated along the Bombay-Pune highway only. The establishment of the Pimpri-Chinchwad New Town Development Authority (PCNTDA) in the 80s helped the development of proper residential colonies in the 90s to an extent. Affordable housing was provided by PCNTDA and availed of by a large number of workers and lower and middle- income group citizens.

3.4.1 City and Population Growth Trends

Pimpri Chinchwad provides employment to industrial workers and of late has emerged as an affordable urban destination for residential purposes. The increasing demand for industrial and residential areas led to continuous addition of areas and up gradation of the erstwhile Municipal Council to Municipal Corporation.

For the last two decades, the decadal growth rate of population has been in the range of 100% while the previous two decades witnessed population growth in the range of 150%. The population of Pimpri-Chinchwad as per 2001 Census is 1,006,417 persons. The current population is estimated to be in the range of 15 lakhs.

Table 1: Growth in Population of Pimpri Chinchwad

Census Year	Population	Decadal Change	Growth Rate
1951	26,367	-	-
1961	39,654	13,287	50.39
1971	98,572	58,918	148.58
1981	2,51,769	1,53,197	155.42
1991	5,20,639	2,68,870	106.79
2001	10,06,417	4,85,778	93.30

3.4.2 Population Density

Pimpri-Chinchwad has a population density of 5,902 persons per square kilometer as per the 2001 census, which is comparatively less than that of its neighboring city, Pune. However, this is mainly due to the large extent of vacant spaces available in the peripheral, undeveloped areas of the city. The developed areas of Pimpri-Chinchwad have a population density of about 7000 persons per sq.km.

Table 2: Population Density of the City

Year	Area (Sq. Km.)	Density per Sq Km
1971	-	-
1981	86.01	2,927
1991	86.01	6,053
2001	171	5902

3.4.3 Other demographic indicators

Pimpri-Chinchwad has a literacy rate of 74% as per the 2001 Census, which is marginally lower than that of Pune city at 77%. In Pimpri-Chinchwad, more than 60% of the population growth has been on account of migration largely due to the employment opportunities prevailing in the region. Pimpri Chinchwad has a sex ratio of 916 females for every 1000 males as per Census 2001, which is much better than that of Pune's at 840 females for every 1000 males.

4 INSTITUTIONAL SETUP OF FIRE FIGHTING

4.1 Organisation Structure

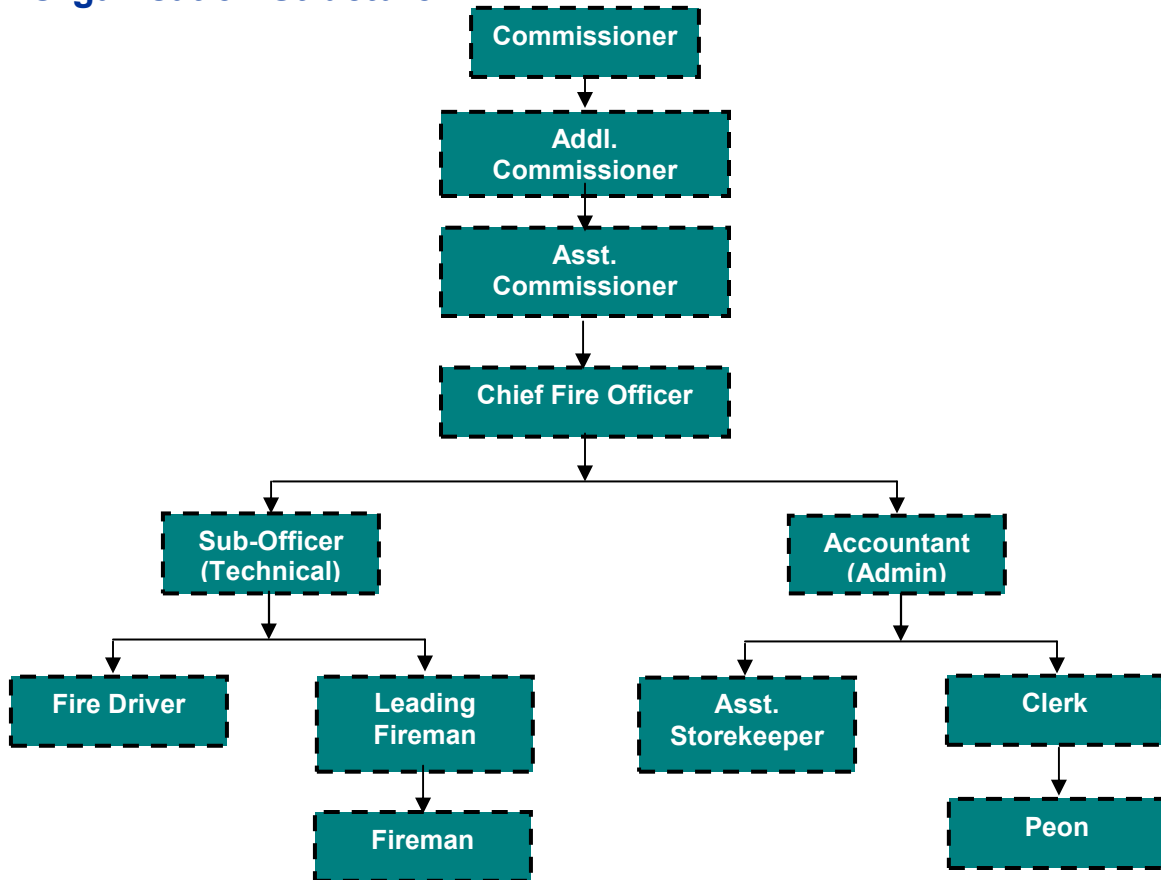


Figure 2: Organization Chart of Fire Service

4.2 Fire Approvals for Building Permission

Fire Department, PCMC keeps strict vigilance upon the new structure or usage of land/building related to fire risk. The NoC required for buildings plans and Industrial units is regularly monitored. The NoC is provided in two steps.

STEP I: Provisional NoC based on the design submitted. The design is verified for the fire proposal based on the DC rule of Pimpri Chinchwad.

STEP II: Final NoC: After completion of the structure and before imparting occupancy approval, the fire department inspects the structure for compliance to DC rules and then issues the final Fire NoC.



The list of documents required for fire NoC and the different NoC issued by the fire department is enclosed in Annexure 1.

4.3 Financial Support for Fire Services

The Fire Department since its origin in 1971 was fully dependent on PCMC organisation fund for its functioning. However, since 2003, the Fire Department had taken initiative on its own to generate funds within the department by the way of charging Fire NOC fees towards various occupancies and activities within its jurisdiction. The department started with an amount of Rs. 34.75 lakhs against targeted amount of Rs. 0.45 lakhs in the year 2003/04. During the previous financial year, it increased to Rs. 213.34 lakhs against the target of 150 lakhs. In coming years the department will be independently, earning its own funds towards the expenditure incurred on the department. Most the income is generated from NOC's permissions for various developments within PCMC limits. The establishments include Cinema halls, Schools, Multiplexes, Shopping centres and Malls. Apart from the commercial establishments, NOC's are also issued to high-rise residential buildings.

Pimpri Chinchwad realising the importance to upgrade the existing system has shifted from departmental budgeting for fire services to creation of separate **Fire Protection Fund**. This financial independence of recognising, accounting and administering of funds is the much-needed move to upgrade the fire services. A separate bank account has also been created with an initial balance of Rs. 2 Crs (Bank Acct. no. 31060200000050 BoB). The revenue earned by the department clearly indicates the ability of the department to upgrade its system in the coming years. The details of the revenue earned by the department are detailed below.

Table 3: Year wise revenue generated by Fire Department

S.No	Year	Amount (Rs. Lakhs)
1	2003-04	34.75
2	2004-05	51.59
3	2005-06	62.57
4	2006-07	250.63
5	2007-08	118.23
6	2008-09	113.62
7	2009-10	213.34



To cope up with the present modern world of Information Technology and communications, the fire services has progressed itself to Computerization. This has helped in the fields of Fire prevention, Fire protection and Fire extinction / fighting. GIS / GPS application for fire services is being under consideration. The computers are also being taken in regular use for regular office work, salary, logistics, inventory, etc.

Computer application is being developed for use in Fire Brigade Control rooms for survey of vulnerable areas, water resources locations, roads; Industrial Fire stations locations, back up rescue service facilities etc. in association with Science and Technology Part (STP) under GISDA scheme. The software is being developed which will be inclusive of information regarding police, NGO's, Hospitals, Blood banks, Traffic, Civil defence, water resources etc. with their concerned persons and telephone numbers for faster access in emergency.

4.4 Response of Fire Department in Emergency

This plan includes area under Pimpri Chinchwad Municipal Corporation in case of any fire disaster. If any disaster takes place in Pimpri Chinchwad jurisdiction, the concerned fire station of the area will be the first to send the vehicle for turn out of the scene and other services will join later. When a message is received at the Central Fire Station, action is taken by the concerned attendants and alerts other fire station giving necessary information and details.

4.4.1 Method of Messages

The responsible person attending the phone calls seeks message in the following format:

1. Name of the Person calling:
2. Telephone number:
3. Name and address of the fire occurrence place
4. Nearest Spot/landmarks
5. Nature of the call (Spillage, Leakage, Fire etc.)
6. Action – Control Room (Central Fire Station)

4.4.2 Action - Duty Officer

Duty officer of the Fire Control room will verify the call from the particular number of the place of incident and shall give priority to alert the other stations and obtain necessary information to tackle the disaster. The officer shall call for Chemical Data Sheet or Chemical Fact Sheet or any ready reckoner maintained in fire brigade headquarters or control rooms. Immediately after confirmation of the incident, the officer shall inform the Chief Fire Officer of the incident.



4.4.3 Action - Fire Officer

The Fire officer shall take charge of the situation, shall instruct all station officers from various fire stations regarding intensity of the incident, and shall warn them to take safety measures and deploy their vehicles with orders from Chief Fire Officer.

1. The officer shall deploy vehicles with necessary staff.
2. First fire engine shall be deployed from the nearest fire station or sub station of the affected area.
3. Additional fire engines from Central Fire Station shall be deployed to the site with proper safety equipments.
4. Rescue Van shall be deployed on site with adequate and proper equipments and crew.
5. Water Tankers from Central Fire Station or Water Supply Department must be made available.
6. Ambulance from fire brigades and Medical or Health Department shall be made available.
7. Vehicles and staff deployed from any sub station shall ensure that they are in proper protective clothing and sufficient breathing apparatus sets are available in the vehicle.

4.4.4 Action - Fire Control Room (After vehicles are deployed)

1. Water Works: To open water supply and increase more water supply to the effected area to get sufficient and continuous water supply to fight the fire.
2. Police: To inform Police Control Room about the incident and to call for mob control and property safeguarding.
3. Fire Services: To inform all sub fire stations for stand by in readiness state.
4. Also, inform Home Guards and Civil – Defence Authorities to provide additional Manpower to assist the fire services and others at site.
5. Also, inform YCM Hospital to provide medical aid at the site and keep the doctors and supporting staff in the state of readiness.
6. Also, inform the civic authorities, experts, heads of various government bodies and departments.
7. Send message for assistance, to the employees residing in the staff quarters and to off-duty personnel.
8. Any information received by fire control room from the place of incident to be passed on to the vehicles on the way to the place of incident.



4.4.5 Action - Senior Officers

When message of the incident is received, all the head of departments shall assemble at the Commissioners office for coordination of the fire fighting work.

4.4.6 Action - At Fire Head Quarter

The Chief Fire Office shall take full command of the activities regarding vehicles and men deployed at the site when the message of the incident is received. The officer shall remain in the control room until all necessary arrangements and formalities in the control room are over and then shall proceed and present at the site of the incident.

4.4.7 Action - On the way to call

All fire tenders proceeding on call, shall always keep close contact with control room for further information and advice. The senior officer or officer in charge of the vehicle shall plan and act according to the information received from the control room.

4.4.8 Action - At place of incident

1. As soon as the first vehicle from fire station with senior officers reaches the place of incident, the officer shall first contact with the person in charge of the property, place, etc. and shall collect necessary information regarding spillage/leakage of the substance and action taken thereof.
2. Park vehicles against wind direction to avoid physical effect of poisonous fumes/flames or gases produced by burning of solid or liquid chemical
3. Each crew member shall wear proper protective clothing and breathing apparatus set before entering the contaminated area
4. A set of two people shall work together and they shall help each other. No one shall work individually.
5. In case no attempts is made to avoid spillage of the source of fire or spillage of chemicals, first duty of the officer is to shut the valve or cock to avoid any more spillage.
6. Attempts shall be made to dilute the atmosphere by spraying spray. Wherever possible fog and mist formation shall be used to reduce the physical effects and dilute the atmosphere.
7. Attempt to remove affected people from site of incident shall be done and they should be immediately shifted with available transport to nearest hospital or camp for necessary treatment.
8. Other fire services attending the incident shall work in close coordination of Chief Fire Officer.
9. The Chief Fire Officer shall call officers from other fire services together to discuss the line of action to be taken



10. If situation get out of control and requires more help of trained personals, help shall be sought from Home Guards or Defence Establishment.
11. Head of Department for Water Supply shall be present in the department and ensure that maximum quantity of water is available at the site.
12. Senior officers of PCMC shall always keep in contact with the control room for developments regarding the mishap.

4.4.9 Action - Situation under control

When the fire is totally extinguished or leakage or spillage is stopped and situation at the site is under control, the Chief Fire Officer with other Technical Expert will jointly carry out the necessary survey and inspection to ensure no more possibilities are present to re-ignite the fire. The Officer shall pass a message “SAFE” to the control room, to be passed to all other authorities.

4.4.10 Action - Service officers

Deputy Chief Fire Officers shall assemble all personnel from different fire services and request individual fire officers to report for any missing or injured person from the crew. The officer shall also ensure that no crewmember got affected to the fumes or spillage; and if such cases are noted, immediate action shall be taken to remove the particular person from the scene for medical treatment

4.4.11 Action - On return to station

1. All the protective clothing used at the sites should be properly de-contaminated for further use at other calls.
2. Breathing apparatus sets should be thoroughly washed, replaced and cylinders changed for new ones, they should also be ensured for proper de-contamination.
3. Personnel should change their clothing used on call for fresh ones.
4. All the appliance, equipment etc. should be thoroughly cleaned decontaminated and kept ready for reuse.
5. A clear report on the occurrence of incident should be entered in the station diary/occurrence book.

5 FIRE RISK MAPPING

The fire risk of the city has been mapped based on the seven risk parameters from fire occurrence and response perspective. The parametric assessment is detailed below.

5.1 Building Material Type

The hazard depends on the quantity of inflammable material, which is a major contributor to the intensity of fire. The contributory factors are evaluated through examination of building typologies, construction material and closeness of location to each other in terms of its effect on initiation of a potential fire. It also relates to the probability of fires being started due to the activities taking place within the location. Those reasons can be recreational, negligence, mistakes etc.

Table 4 : Fire Risk Factor - Building Material Scorecard

Category	Description	Score (Maximum 25)
High	Closely located houses (made out of wooden, bamboo, other easily inflammable material) in a cluster of 25 houses or more, Within one grid area of 500 m x 500m	25
Moderate	Closely located houses (made out of wooden, bamboo, other easily inflammable material) in a cluster of 15-17 houses, Within one grid area of 500 m x 500m	15
Low	Closely located houses (made out of wooden, bamboo, other easily inflammable material) in a cluster of 5-7 houses, Within one grid area of 500 m x 500m	5
Very Low	Closely located houses (made out of RCC structure and other non inflammable material) in a cluster of 11-12 houses, Within one grid area of 500 m x 500m	1

5.1.1 Factor Output

Building Risk Factor is overall high in the slum pockets of the city that we can see from the map. Most such structures are located at the northern half of the city.

There are 72 slum pockets identified in the city of Pimpri Chinchwad. These pockets are sparsely scattered all over the city and mainly concentrate near the industrial area. The following map shows major slum pockets having an area of more than 2 sq km.

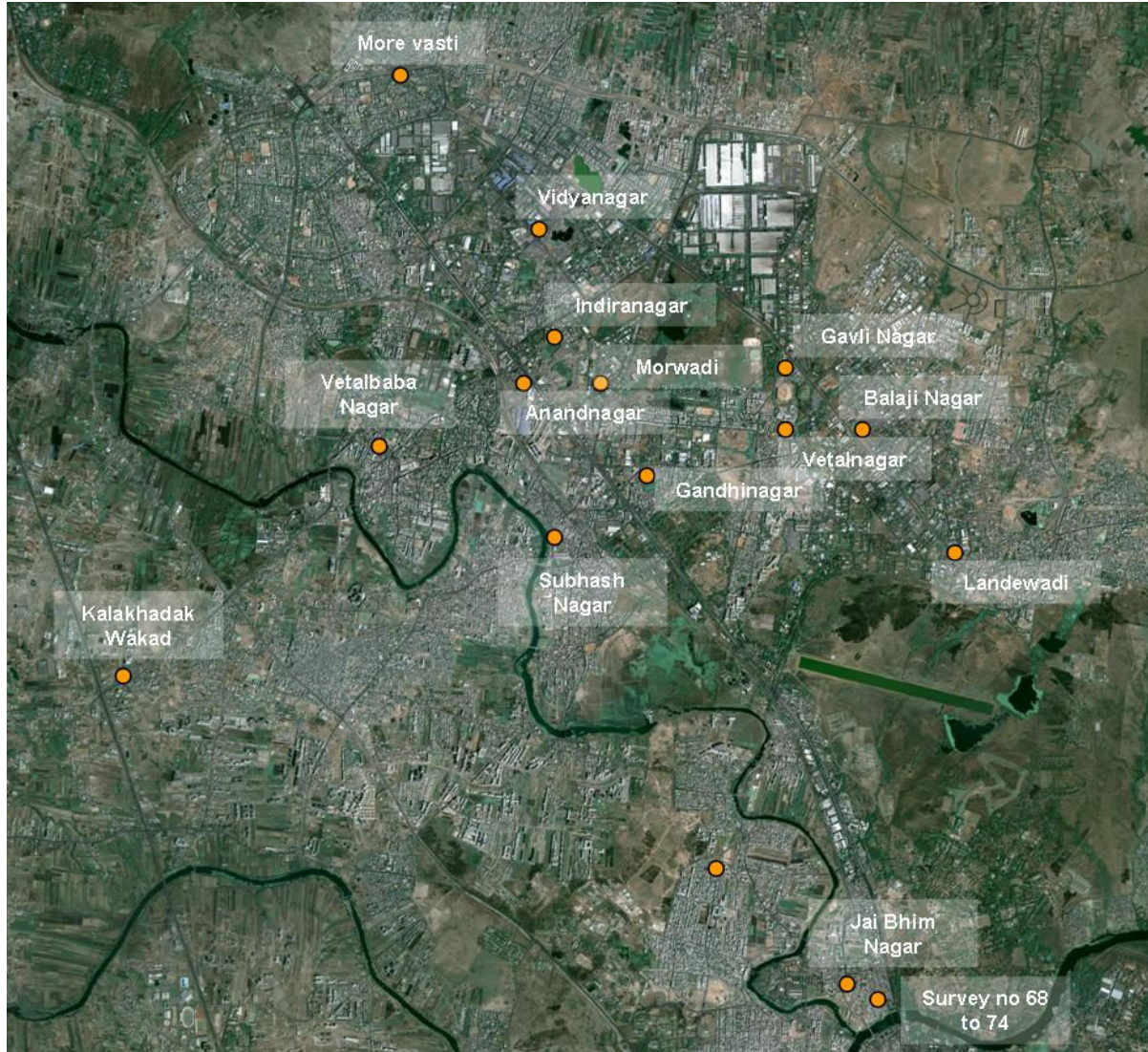


Figure 3: Major Slum Pockets of PCMC

The following are the details of the slum pockets identified above:

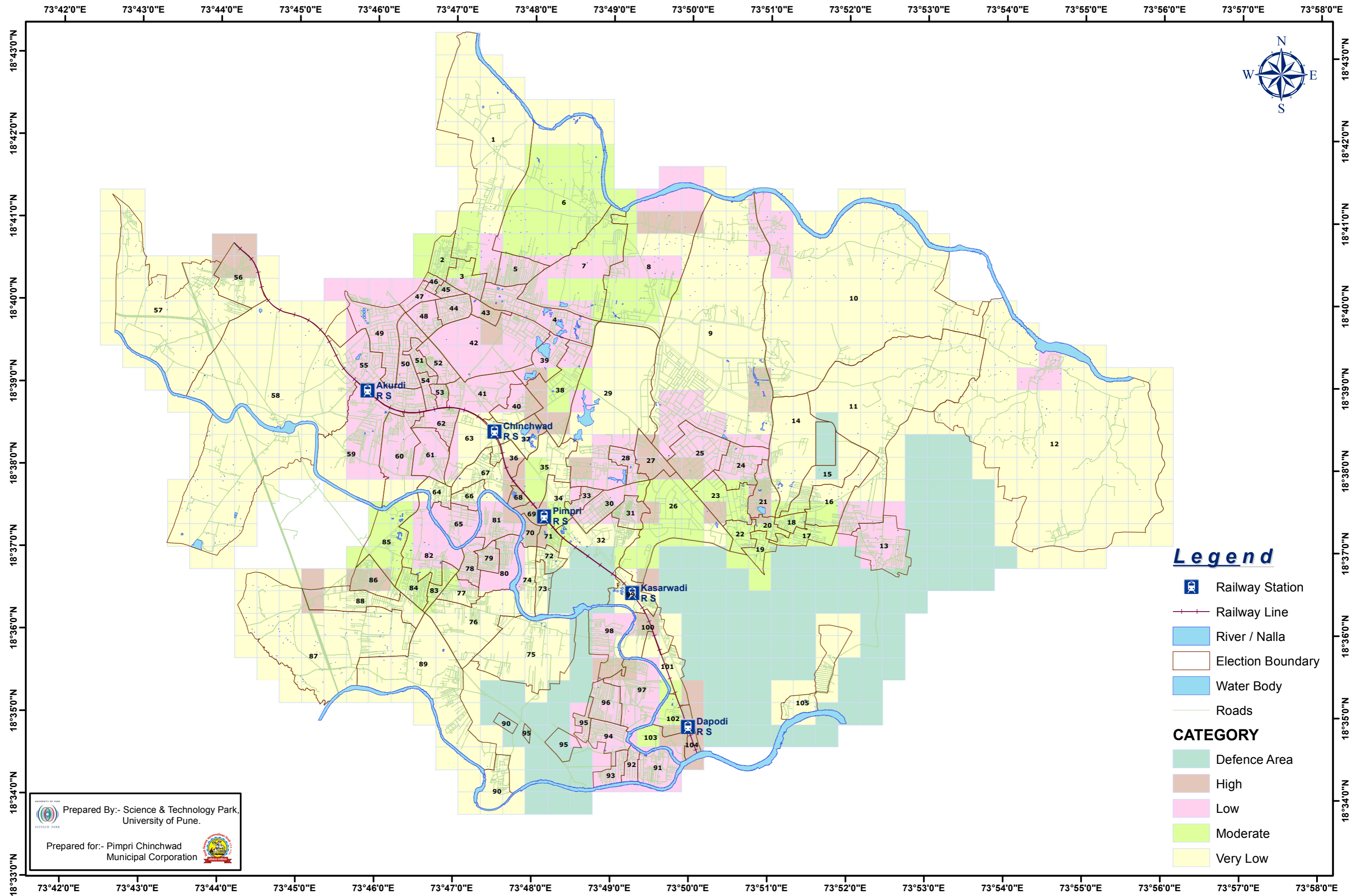
Table 5: Populated Slum pocket details

Sr. no	Name of Slum	Slum Area (Sq Mtrs.)	Population	Households
1	Vidyanagar	41004.42	4409	1164



2	More Vasti	32558.22	2162	552
3	Anandnagar	58993.92	10418	2282
4	Vetalnagar	30685.41	5458	1289
5	Indiranagar Chinchwad	23075.82	3608	823
6	Kalakhadak – Wakad	31696.67	2078	569
7	Subhash Nagar	19283.37	1854	493
8	Landewadi	24014.02	3867	923
9	Balaji Nagar	54872.34	7605	1856
10	Gavli Nagar	21448.23	2574	650
11	Vitthal Nagar	31425.18	6769	1367
12	Morwadi	23240.87	3607	915
13	Survey No 68 to 74	63654.95	6171	1579
14	Jai Bhim Nagar	22077.99	2689	695
	Total	478031.4	63269	15157

BUILDING MATERIAL TYPE IN PCMC AREA



Prepared By:- Science & Technology Park,
University of Pune.

Prepared for:- Pimpri Chinchwad
Municipal Corporation

5.2 Fire Sources

The hazard depends on the quantity of available fuel, which is a major contributory factor. As Gasoline station, liquid gas storage, restaurant and others shop that use the material are easy to catch fire, criteria had done in one grid area of 500 m x 500m.

Table 6: Fire Risk Factor – Fire Sources Scorecard

Category	Description	Score (Maximum 15)
High	Availability of at least 1 high category fire source (gasoline station, liquid gas storage for commercial purposes, etc.) within 50 m radius	15
Moderate	More than 3-5 commercial liquid gas users (restaurants, small scale merchants)	5
Low	2-3 commercial liquid gas users (restaurants, small scale merchants)	3
Very Low	Less than 2 commercial liquid gas users (restaurants, small scale merchants)	1

5.2.1 Factor Output

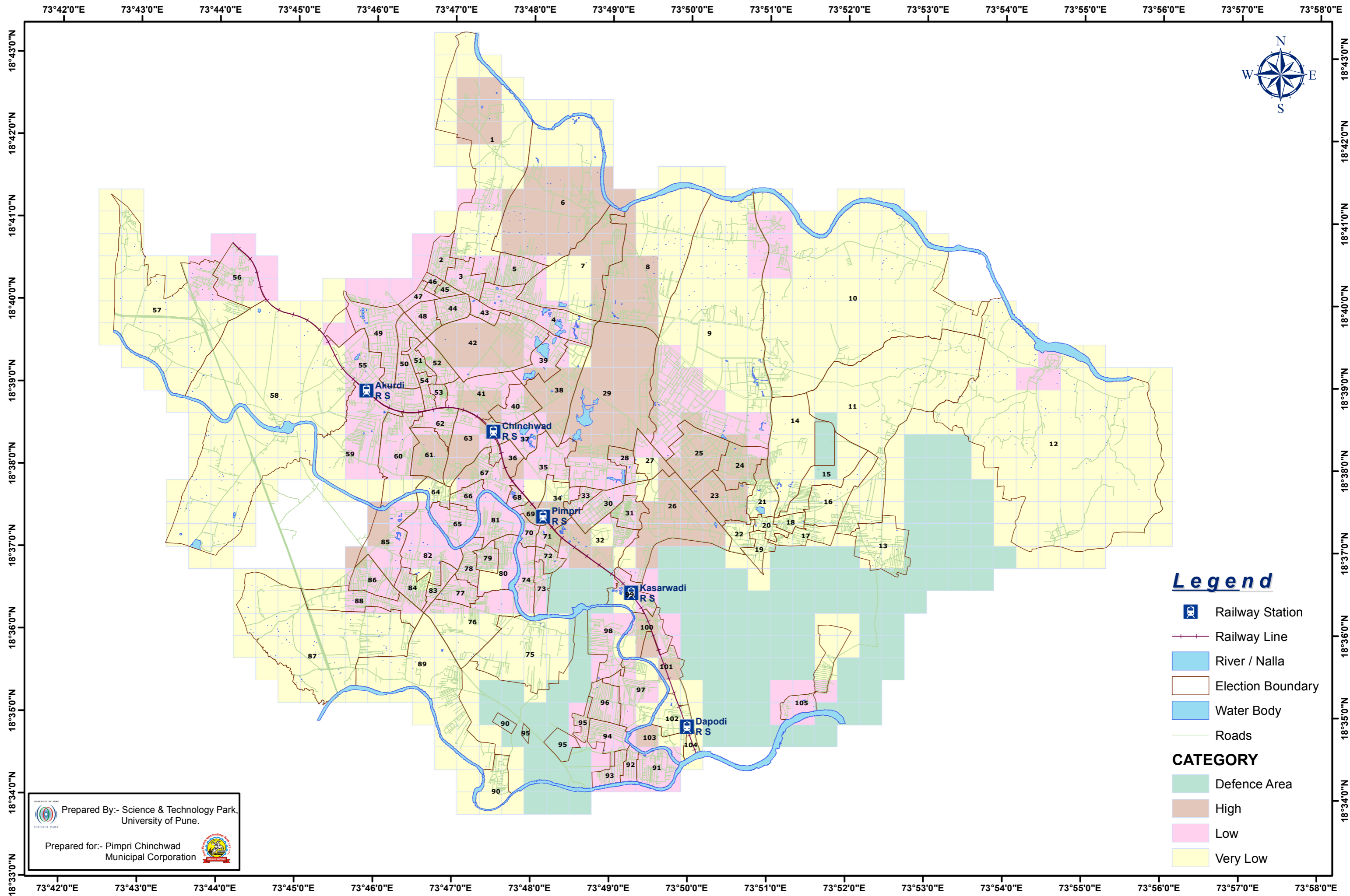
This fire source factor is much in the north part of the city because of the industrial activities in the city. With the rapid spread and development of industrial base in the city, the potential for chemical and industrial fire hazards is severe. The industrial clusters present in the city possess huge quantity of inflammable materials, has the potential to act as a major source of fire and can spread to adjoining areas. The Major Accident Hazardous (MAH) Industries in Pimpri Chinchwad are as follows:

1. Thermax Ltd. (Chemical Division) Bhosari, Pune – 26
2. TELCO Ltd. Pimpri, Pune – 18
3. Greaves Foseco Ltd., Mumbai – Pune Road, Chinchwad
4. Dr. Beck and Co. (India) Ltd., Pimpri, Pune – 18
5. Dai-Ichi Kankaria Ltd. Mumbai – Pune Road, Kasarwadi, Pune – 34
6. Century Enka Ltd., MIDC, Bhosari, Pune – 26
7. Bajaj Tempo Ltd. Mumbai – Pune Road, Akurdi, Pune – 35
8. Bajaj Auto Ltd., Mumbai – Pune Road, Akurdi, Pune – 35



9. Demech India Ltd., T8 MIDC Bhosari, Pune – 26
10. DGP Hinoduya Ind. Ltd., MIDC Bhosari, Pune – 26
11. MSP Ltd., Pimpri, Pune – 18
12. Tata Auto Comp. Ltd., Pune – 26

FIRE SOURCE MAP IN PCMC AREA



Legend

- Railway Station
 - Railway Line
 - River / Nalla
 - Election Boundary
 - Water Body
 - Roads
- CATEGORY**
- Defence Area
 - High
 - Low
 - Very Low

Prepared By:- Science & Technology Park,
University of Pune.

Prepared for:- Pimpri Chinchwad
Municipal Corporation

5.3 Fire Fighting Scenario

The capability or the effectiveness of fire fighting services within a given location is determined by the availability of water and available maneuverings space to mobilize the fire fighting team within a fastest time possible to act in an appropriate manner in case of fire. Criteria had done in one grid area of 500 m x 500m.

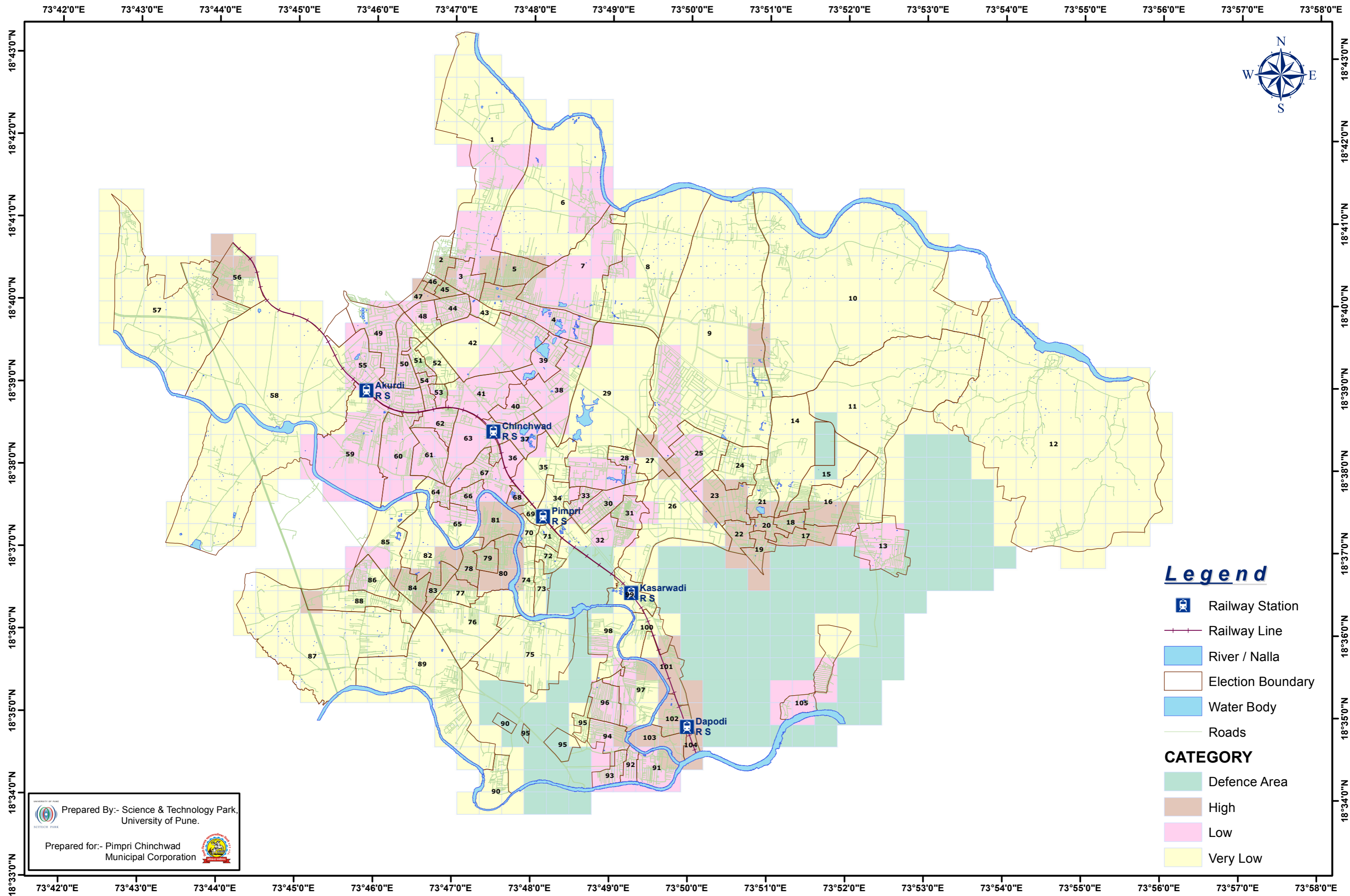
Table 7: Fire Risk Factor - Fire Fighting Scenario Scorecard

Category	Description	Score (Maximum 15)
High	Single width road is not enough for movement of fire fighting equipment and/or no source of water within a radius of 50m.	15
Moderate	Single width road is enough for movement of fire fighting equipment but dead end of the road and/or no source of water within a radius of 50m	10
Low	Single width road but it is enough for movement of fire fighting equipment and/or no source of water within a radius of 50m	3
Very Low	Double width road is enough for movement of fire fighting equipment but no source of water within a radius of 50m	2

5.3.1 Factor Output

The fire fighting scenario risks are mostly in old areas of the city, due to very rapid growth and immigration of industrial labour there is a congested development in old areas. Certain villages which were added later to the Municipal Corporation had unauthorized congested construction mostly in the areas of Bhosari and Chikli (Industrial Units).

FIRE FIGHTING SCENARIO MAP IN PCMC AREA



5.4 Electrical Wiring System

It is observed that due to the connections of temporary nature or due to maintenance of poor standards of wiring, fire hazards potentials are severe. This kind of irregularities can be observed mainly in market areas, open air shopping areas, in areas where unreserved communities are located. Some times these are isolated pockets or series of pockets located in close proximity. Criteria had done in one grid area of 500 m x 500m.

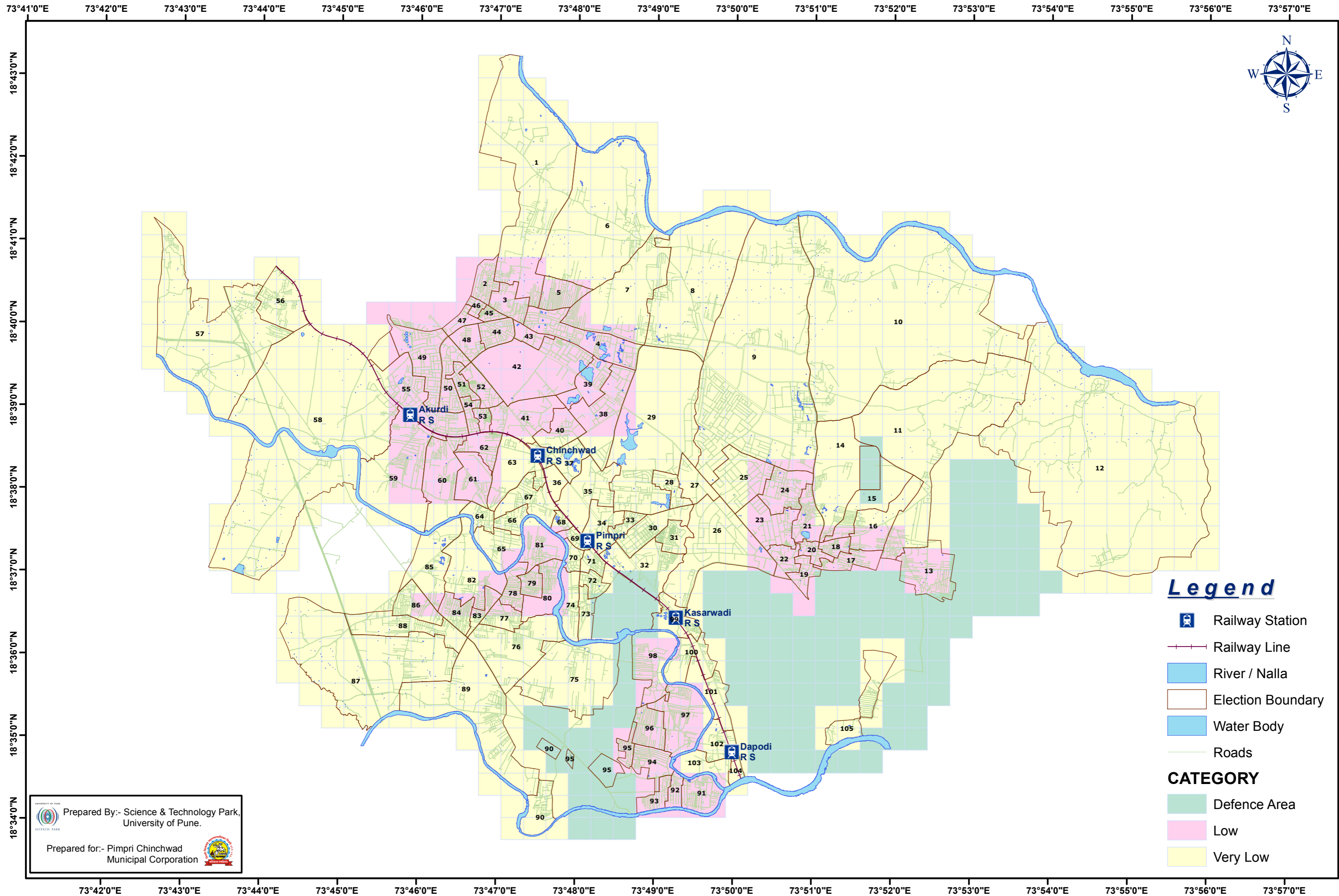
Table 8: Fire Risk Factor - Electrical wiring System Scorecard

Category	Description	Score (Maximum 5)
High	01 Cluster of temporary houses/shops with poor electrical wiring system spreads over an area of 100 m ²	5
Moderate	01 Cluster of temporary houses/shops with poor electrical wiring system spreads over an area of 50-100 m ²	3
Low	01 Cluster of temporary houses/shops with poor electrical wiring system spreads over an area of 25-50 m ²	2
Very Low	01 Cluster of temporary houses/shops with poor electrical wiring system spreads over an area of less than 25 m ²	1

5.4.1 Factor Output

This electrical wiring system risk is low for the city since all places are well administered due to the presence of industrial units.

ELECTRICAL WIRING SYSTEM IN PCMC AREA



Legend

-  Railway Station
 -  Railway Line
 -  River / Nalla
 -  Election Boundary
 -  Water Body
 -  Roads
- CATEGORY**
-  Defence Area
 -  Low
 -  Very Low

Prepared By:- Science & Technology Park,
University of Pune.

Prepared for:- Pimpri Chinchwad
Municipal Corporation

73°42'0"E 73°43'0"E 73°44'0"E 73°45'0"E 73°46'0"E 73°47'0"E 73°48'0"E 73°49'0"E 73°50'0"E 73°51'0"E 73°52'0"E 73°53'0"E 73°54'0"E 73°55'0"E 73°56'0"E 73°57'0"E

5.5 Fire history of the area

The history refers to the number of fires initiated within an area in the past. Areas, which are known to have been particularly prone to outbreaks of fire due to natural or manmade causes, have been considered in mapping as having high degree of Fire hazard. Criteria had done in one grid area of 500m x 500m.

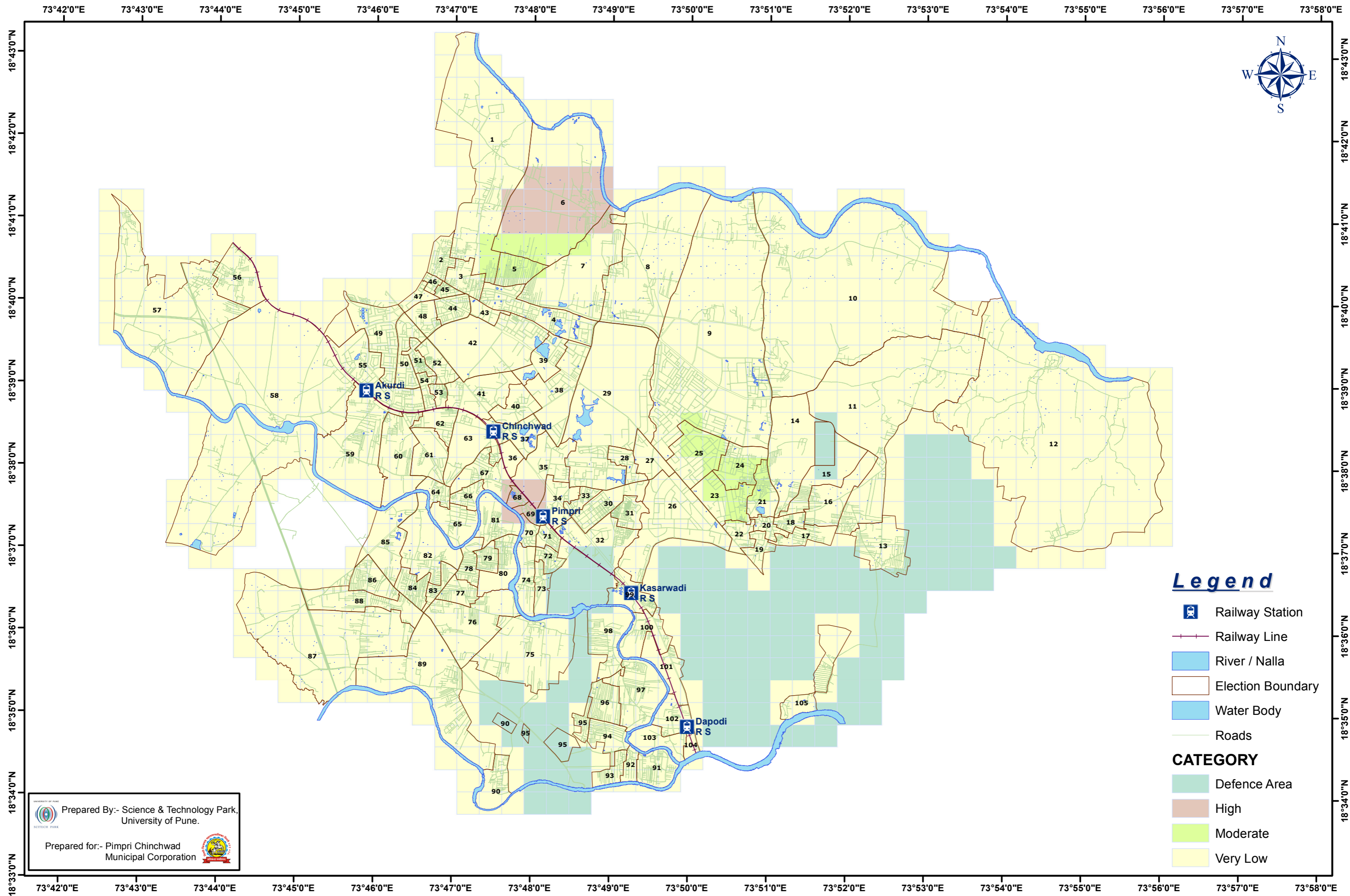
Table 9: Fire Risk Factor - Fire History Scorecard

Category	Description	Score (Maximum 10)
High	04 previous incidents of fire recorded during last 05 years Within one grid area of 500 m x 500m	10
Moderate	03 previous incidents of fire recorded during last 05 years Within one grid area of 500 m x 500m	5
Low	02 previous incidents of fire recorded during last 05 years Within one grid area of 500 m x 500m	3
Very Low	01 previous incidents of fire recorded during last 05 years Within one grid area of 500 m x 500m	1







5.5.1 Factor Output

The Fire history risk is mostly in the industrial belt of Pimpri and Bhosari. Also, since Chikli is an area of unorganized industries, frequent fire calls of smaller magnitude has been reported.



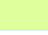

FIRE HISTORY OF AREA IN PCMC AREA




Legend

-  Railway Station
-  Railway Line
-  River / Nalla
-  Election Boundary
-  Water Body
-  Roads

CATEGORY

-  Defence Area
-  High
-  Moderate
-  Very Low

 Prepared By:- Science & Technology Park,
University of Pune.
 Prepared for:- Pimpri Chinchwad
Municipal Corporation

5.6 Building Density

The fire hazard also depends on the building density. The contributory can be evaluated from the city map scale: 1: 2000 to 1:10000 which is done by Computer Department (GIS Section). Criteria had done in one grid area of 500 m x 500m.

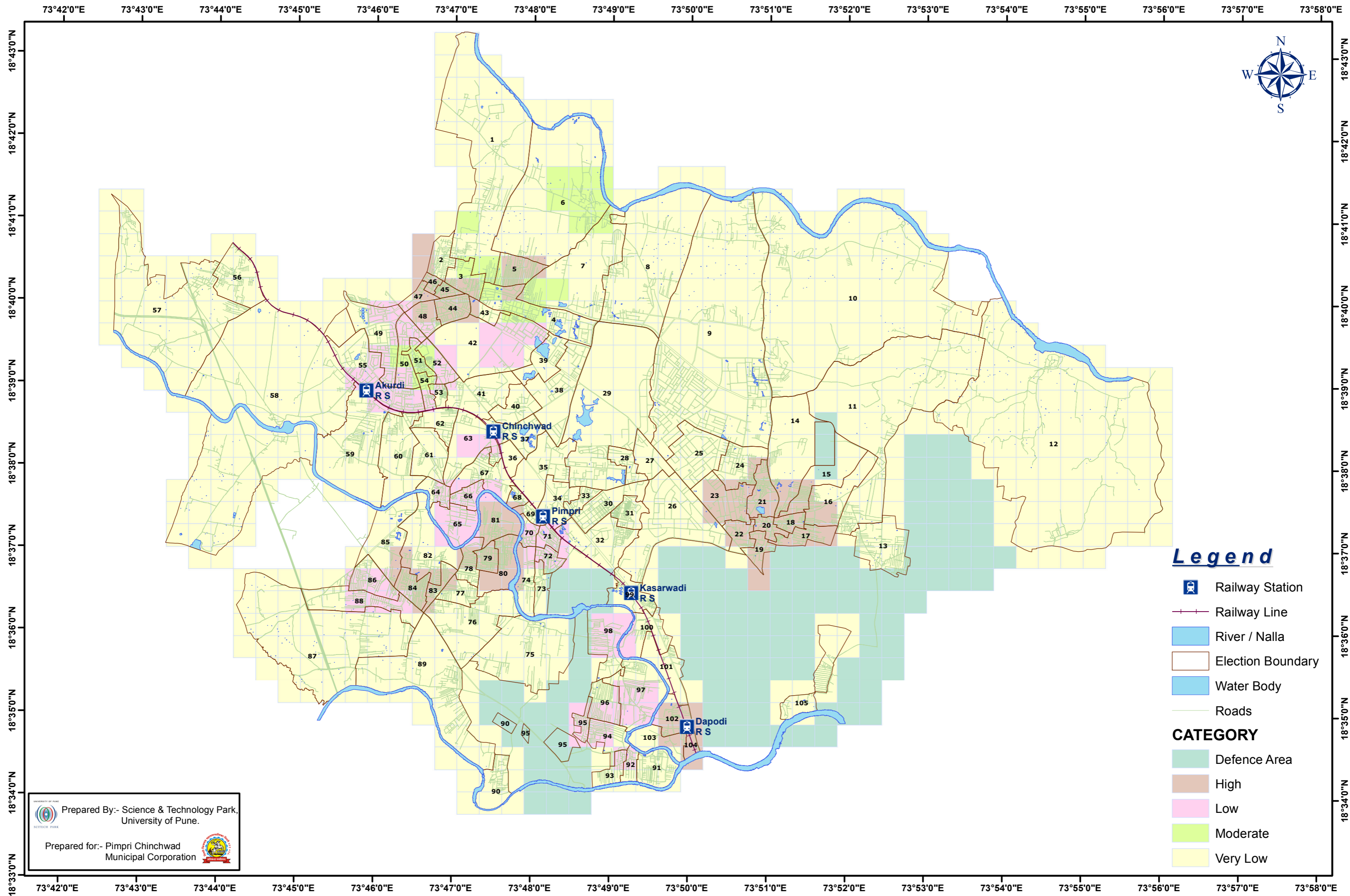
Table 10: Fire Risk Factor - Building Density Scorecard

Category	Description	Score (Maximum 15)
High	More than 95 percent of buildings within on grid area of 500mx500m	15
Moderate	85 - 70 percent of buildings within on grid area of 500mx500m	10
Low	65 - 50 percent of buildings within on grid area of 500mx500m	5
Very Low	Less than 50 percent of buildings within on grid area of 500mx500m	1

5.6.1 Factor Output

This factor risk is mostly concentrated in the old areas of the town. Major part is along the economic activities area of Nigdi, Bhosari and Pimpri.

BUILDING DENSITY MAP IN PCMC AREA



Prepared By:- Science & Technology Park,
University of Pune.

Prepared for:- Pimpri Chinchwad
Municipal Corporation

Legend

- Railway Station
 - Railway Line
 - River / Nalla
 - Election Boundary
 - Water Body
 - Roads
- CATEGORY**
- Defence Area
 - High
 - Low
 - Moderate
 - Very Low

5.7 Accessibility of the area

Accessibility of the area relates to the capability or the effectiveness of fire fighting services. Accessibility can be evaluated from the 1:2000 to 1:10 000 city map which is good detailed. Criteria had done in one grid area of 500 m x 500m.

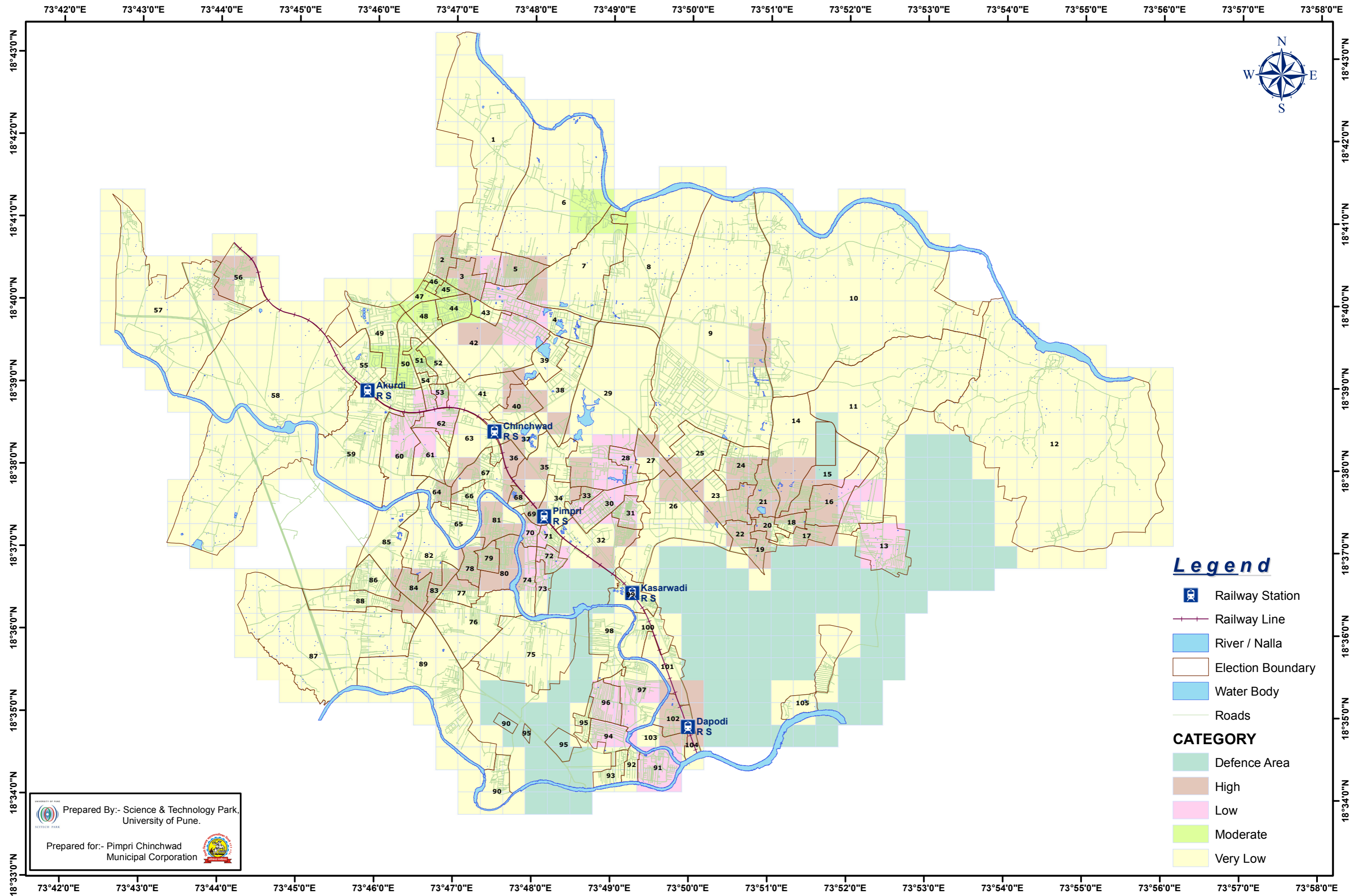
Table 11: Fire Risk Factor - Accessibility of the area Scorecard

Category	Description	Score (Maximum 15)
High	No any kind of road for vehicle within one grid area of 500mx500m	15
Moderate	Dead road for vehicle within one grid area of 500mx500m	10
Low	One way narrow road for vehicle within one grid area of 500mx500m, which is vacant area. Or no any kind of road for vehicle within one grid area of 500mx500m which is vacant area.	5
Very Low	Well access, two way road for vehicle to inside area of one grid area of 500mx500m	1

5.7.1 Factor Output

This factor risk is mostly along the old central areas of the cities. Since these areas has been the centre of the business activity and construction density being high due to old constructions, the accessibility in these areas are very low. These areas are Nigdi, Pimpri and Bhosari.

ACCESSIBILITY MAP IN PCMC AREA



Prepared By:- Science & Technology Park,
University of Pune.

Prepared for:- Pimpri Chinchwad
Municipal Corporation



5.8 Fire Hazard Zones

The fire hazard map is prepared through integration of individual attributes through overlay process. The integration is done through manual method. The zonation is done through identification of areas having relatively uniform characteristics from the fire hazard attribute viewpoints through clustering according to the total fire hazard rating.

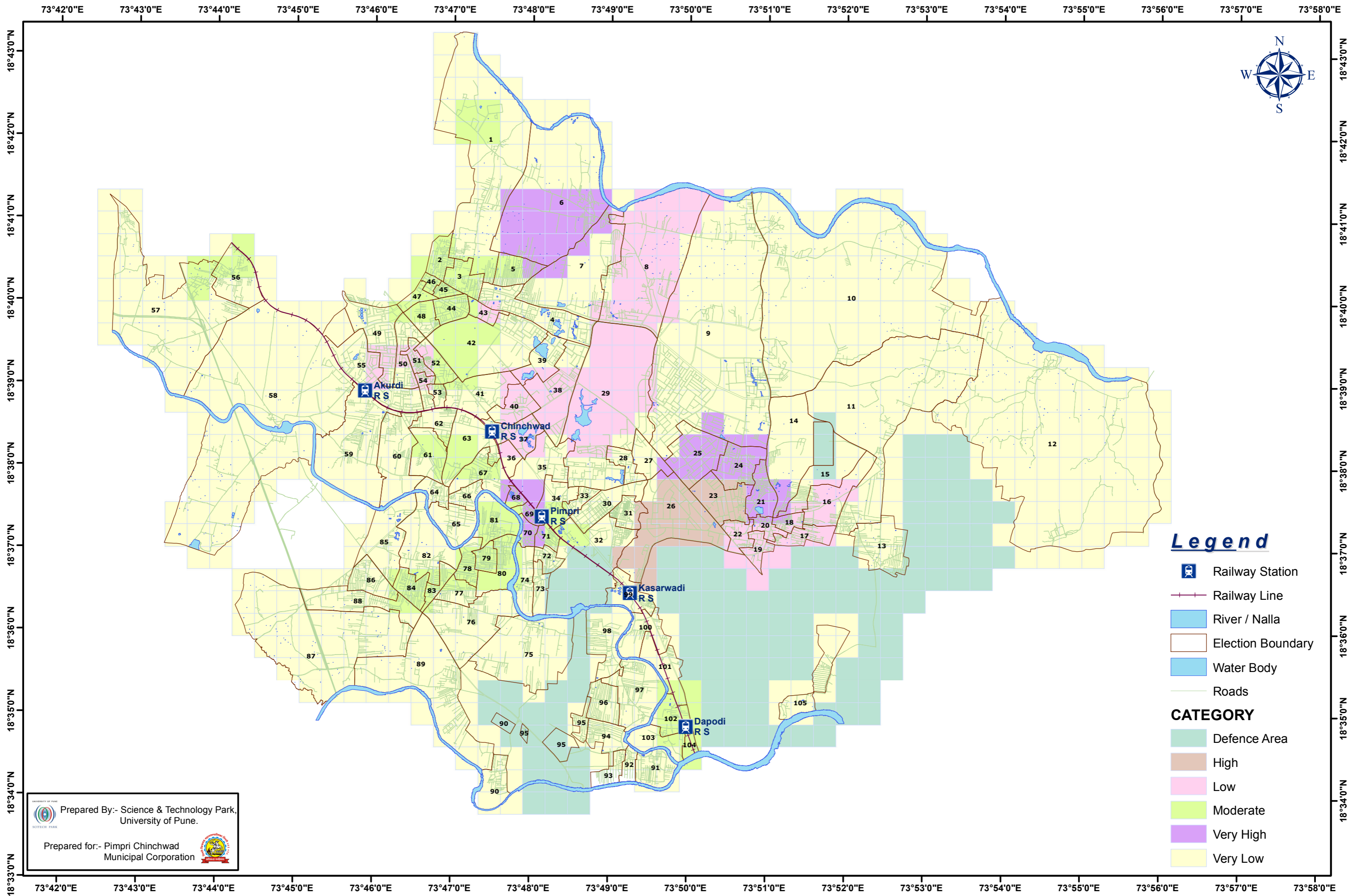
Total Fire Hazard Rating

Total Integrated Score	Fire hazard rating	Legend
More than 50	Very High	
30-50	High	
15-30	Moderate	
5-15	Low	
Less than 5	Very Low	




5.8.1 Risk Factors output

After summarizing all the criteria's of these seven factors of fire risk, it is displayed that risk mostly is concentrated in the industrial region of Bhosari MIDC due to the presence of mostly chemical industry and in the industrial area of Chikli owing to unauthorized construction and operations.

FIRE HAZARD ZONATION MAP IN PCMC AREA



Legend

-  Railway Station
 -  Railway Line
 -  River / Nalla
 -  Election Boundary
 -  Water Body
 -  Roads
- CATEGORY**
-  Defence Area
 -  High
 -  Low
 -  Moderate
 -  Very High
 -  Very Low

Prepared By:- Science & Technology Park,
University of Pune.

Prepared for:- Pimpri Chinchwad
Municipal Corporation



5.9 Summarization

From the field data collection and map analysis of Fire Risk Assessment Mapping of PCMC show that PCMC has fire risk mostly around industrial regions. Predominantly higher fire risk areas are old industrial region of Pimpri and Bhosari and unauthorized establishments of Chikli.

6 PCMC'S FIRE OCCURANCES DETAIL

The fire service of PCMC responds to life and property saving fire calls not only within the municipal limits but also outside the limits. Within the jurisdiction, the fire service responds to various other special service calls like drowning cases, Helipad / VIP/Exhibitions/ Religious programmes stand by duties, water spraying, dewatering calls, tree felling accidents, oil spillage calls on road and all other miscellaneous works.

Table 12: Year wise Fire Call Statistics of Fire Department

S.No	Year	Within PCMC Limits		Outside PCMC Limits		Total PCMC		Grand Total
		Fire Calls	Rescue Calls	Fire Calls	Rescue Calls	Fire Calls	Rescue Calls	
1	2003-04	271	128	17	13	288	141	429
2	2004-05	287	187	18	0	304	187	491
3	2005-06	328	219	32	6	360	225	585
4	2006-07	327	146	25	6	352	152	504
5	2007-08	361	195	22	3	383	198	581
6	2008-09	411	212	23	5	434	217	651
7	2009-10	279	208	15	3	294	211	505

Table 13: Month wise Fire Call Statistics of Fire Department

S.No	Year 2009-10	Within PCMC Limits		Outside PCMC Limits		Total PCMC		Grand Total
		Fire Calls	Rescue Calls	Fire Calls	Rescue Calls	Fire Calls	Rescue Calls	
1	April	43	19	5	0	48	19	67



2	May	43	24	2	1	45	25	70
3	June	15	20	0	1	15	21	36
4	July	20	25	1	1	21	26	47
5	August	15	25	1	0	16	25	41
6	September	23	20	1	0	24	20	44
7	October	48	19	1	0	49	19	68
8	November	52	31	2	0	54	31	85
9	December	20	25	2	0	22	25	47
	Total calls	279	208	15	3	294	211	505



7 FIRE HAZARDS RESPONSE MITIGATION PLAN

A.	Law and Authorities (Public Relation & Crisis Coordination, Coordination with other Govt. Agencies)	
1.	Name of City	Pimpri Chinchwad
2	Population of City as per 2001 Census	10,06,417
3	Area of City (in Sq. Km)	177 sq. km
4	Population Density of City	5902 persons/sq. km
5	Name of Authority Maintaining Fire & Emergency Services	Pimpri Chinchwad Municipal Corporation
6	Are you maintaining Fire & Emergency Service as per Govt. of India Guidelines	
a.	One fire engine for 50,000 populations unto 300000 populations. From 300000 upward additional Fire Engine per Lakh of population or fraction thereof	No
b.	One fire station for 10 sq. km Urban area	No
c.	One fire station for 50 sq. km rural area	No
d.	Response time max. 5 min in Urban area and 20 min in rural area	No
7	Administrative Head of Fire & Emergency Service	
a.	Name	Mr. Sahabrao Giakwad
b.	Designation	Assistant Commissioner
c.	Address with Pin Code	PCMC main building, Mumbai-Pune Road, Pimpri-411018



d.	Telephone No. (with STD code)	020 – 27425511/12/13/14 020- 67333333
e.	Fax No.	020-27425600 020-67330000
f.	Mobile No.	9922501463
g.	E-mail	pcmc@vsnl.com
h.	Website	www.pcmcindia.gov.in
8	Head of Fire & Emergency Service	
a.	Name	Kiran B. Gawade
b.	Designation	Fire Officer
c.	Address with Pin Code	Gen. Arunkumar Vaidya Central Fire Station, Sant Tukaram Nagar, Pimpri-411018
d.	Telephone No. (with STD code)	020-27423333/ 27422405/ 27420212 (D)
e.	Fax No.	020-27420212
f.	Mobile No.	9922501901
g.	E-mail	gkiran64@gmail.com
9	Name of the Central Fire & Emergency Station, Fire & Emergency Service Head Quarters Address with Pin Code	Gen. Arunkumar Vaidya Central Fire Station
a.	Address with Pin Code	Sant Tukaram Nagar, Pimpri- 411018
b.	Telephone No. (with STD Code)	020-27423333/ 27422405/ 27420212 (D)



c.	Fax No.	020-27420212
d.	E-mail	gkiran64@gmail.com
10.	Do you conduct any fire safety training program or awareness program for the public	Yes. In schools and various organisations
11.	Do you carry out evaluation drills/mock drills in vital installations/ industrial plants/ Government Buildings	Yes. In Industries, Malls, Multiplexes, Hospitals, Schools
B	Risk Assessment, Incident Prevention & Mitigation of City (Risk Evaluation and Control)	
12.	Is Fire Approval is Mandatory for construction of all types of buildings	Yes
13.	Is Fire Approvals are as per the Provisions contained in National Building Code 2005	Yes
14.	Is the central data of all fire approval is maintained in Head Quarters	Yes
15.	Please provide the copy of Development Control Rules of the city	Enclosed as Annexure 2

16. Please, provide the details of Potential Fire Risk in the City

Sr. No	Particulars	Nos.	
		Residential	Non-residential
1	Buildings		
	Upto 15 Meters	120000	30000
	15 to upto 24 Meters	2000	600
	Above 24 to upto 36 Meters	740	10
	Above 36 to upto 45 Meters	-	-



	Above 45 to upto 60 Meters	-	-
	Above 60 to upto 75 Meters	-	-
	Above 75 to upto 100 Meters	-	-
	Above 100 to upto 150 Meters	-	-
	Above 150 Meters	-	-
2	Industrial Area/ Chemical Zone	-	MIDC-Bhosari
3	Cinema Halls/ Malls/ Drama Theatres		Cinema Halls -6 Malls – 7 Drama Theatres - 3
4	Public Gathering Places	-	-
5	Hazards storage	-	-
6	Pilgrims Area (Floating Population)	-	01
7	Exhibition/ Public Function Grounds were permissions for erecting pedals for circus or any other religious/ social functions are granted	-	03
8	Other (Pls give details)	-	-

Note: All above buildings should be sub-classified based on following classification as per the Part 4 of NBC 2005:

A.	Residential Buildings	
a.	Lodging or Rooming Houses	20
b.	One or Two Family private dwelling	-
c.	Dormitories	7
d.	Apartment Houses (Flat)	1840



e.	Hotels	35
f.	Hotels (Starred)	4
B.	Educational Buildings	
a.	School upto Senior Secondary Level	25
b.	All other Training Institutes (Medical, Engineering and Colleges)	15
C	Institutional Buildings	
a.	Hospitals and Sanatoria	25
b.	Custodial Institutions	10
c.	Penal & Medical Institutions	07
D	Group D Assembly Buildings	15
E	Group E Business Buildings	10
F	Group F Mercantile Buildings	12
G	Group G Industrial Buildings	20
H	Group H Storage Buildings	04
I	Group J Hazardous Buildings	04
17	Road Network	
a.	Any major National Highway passing through city	NH-4 and NH 50
b.	Any major State Highway passing through city	-
c.	Any Tunnels in the City	No
d.	Major Bridges in the City	Two. Pimpri and Bhosari Bridge



e.	Accident prone patches	Pune Bangalore Expressway at Wakad
f.	Road in Hilly Areas or Hilly/Mountain Area in the City or near City	No
18	Railway Network	
a.	Mail/Express Train main stations	Pimpri Station and Chinchwad Station
b.	Local Trains Stations	Akurdi, Kasarwadi and Dapodi Stations
c.	Metro Trains Stations	No
d.	Underground Metro Stations	No
e.	Sky Bus	No
f.	Mono Rail	No
19	Airport	
a.	Domestic	No
b.	International	No
c.	Cargo	No
d.	Helipad	One. At Tata Motors
e.	Air Force Airbase	No
20	Sea/ River Port	
a.	Passengers Jetties	No
b.	Container Jetties	No
c.	Bulk Material Handling Jetties	No



d.	Petroleum Products Handling Jetties	No
e.	Chemicals & Hazardous Goods Handling Jetties	No
f.	Fishing Jetties	No
g.	Ship Breaking Areas	No
h.	Ship Building Docks	No
i.	Naval Base	No
21	Vital Installations in the City	
a.	Secretariat	No
b.	Legislation Assembly	No
c.	Bank Headquarters	No
d.	HQ's of major Govt. & Semi Govt. Organisations	No
e.	Atomic Power Stations	No
f.	Chemical Factories	Yes
g.	Fertilizer Plants	No
h.	Major Hazardous Units	10 Nos.
i.	Cross Country Pipelines	MNGL, Reliance Gas, HPCL
j.	Petroleum Oil Companies like Refinery, Bulk Storages Depot	No
k.	Petroleum & Flammable Gas, LPG filling Stations	MNGL
l.	Domestic Gas Pipe Network	MNGL
m.	Cylinder Gas Storage-outlets	5 Nos.



22	Temporary Structures such as Exhibition Halls, Circus tent, Pedals, erected for religious activities	Yes
23	Dilapidated & Unsafe Buildings in the City	No
24	Unorganised House like Juggi Zopadi & Slum Area	72
25.	Geological Hazards Associated with City	
a.	Earthquake	No. Seismic Zone 3
b.	Tsunami	No
c.	Landslide, Mudslide, Subsidence	No
d.	Glaciers, Iceberg	No
26.	Meteorological Hazards Associated with City	
a.	Flood, Flash Floods, Tidal Surge	Only Floods
b.	Drought	No
c.	Fire (Forest range, Urban, wild land)	Urban, Transit and Industrial
d.	Snow, Ice, Hail, Avalanche	No
e.	Windstorm, tropical, cyclone, hurricane, tornado, water spout, dust/sand storm	No
f.	Extreme temperatures (Heat, Cold)	No
g.	Lightning Strikes	No
h.	Famine	No
i.	Geomagnetic Storm	No
27	Biological Hazards Associated with City	



a.	Emerging diseases that impact human or animal (Swine flu, Malaria, Birds Flu, Plague, Smallpox, Anthrax, Foot&Mouth Diseases)	Swine Flu, Malaria and Bird Flu
b.	Animal or Insect infestation or damage	No
28.	Human caused events such as following	
A.	Accidental	
i.	Hazardous material (explosive flammable liquid, flammable gas, flammable solid, oxidizers, poison, radiological, corrosive) spill or release	Yes
ii.	Explosion/ fire	Yes
iii.	Transportation Accident	Yes
iv.	Building/structure collapse	Minor
v.	Energy/power/utility failure	No
vi.	Fuel/resource shortage	No
vii.	Air/water pollution, contamination	No
viii.	Water control structure/ dam/ lever failure	No
ix.	Financial issues (ecological depression, inflation, financial system collapse)	No
x.	Communication system interruptions	No
xi.	Misinformation	No
B.	Intentional	
i.	Terrorism (explosive, chemical, biological, radiological, nuclear, cyber)	No
ii.	Sabotage	No



iii.	Civil disturbance, public unrest, mass hysteria, riot	Riots only (Once in 2006)
iv.	Enemy Attack, War	No
v.	Insurrection	No
vi.	Strike, or Labour Dispute	Only twice in Industry
vii.	Disinformation	No
viii	Criminal activity (vandalism, arson, theft, fraud, embezzlement, data theft)	No
ix	Electromagnetic Pulse	No
x	Physical or information security breach	No
xi	Workplace Violence	No
xii	Product defect or contamination	No
xiii	Harassment	No
xiv	Discrimination	No
29	Technological Caused events that can be unrelated to natural or human caused events, such as the following:	
a.	Central computer, mainframe, software or application (internal/external)	No
b.	Ancillary support equipment	No
c.	Telecommunications	No
d.	Energy/power/utility	No

30. Analysis of Fire & Rescue Calls to Draw a Probability of Hazards



Sr. No.	Particulars	2005	2006	2007	2008	2009	2010
1	Total no. of Fire & Rescue Calls	491	585	504	581	651	725
a.	No. of Fire Calls	119	171	253	300	323	451
b.	No. of Rescue Calls	19	131	175	186	225	274
c.	No. of Gas Leaks	10	04	12	35	99	34
d.	Building Collapse	01	01	01	01	02	1
e.	Hazards Material calls	0	0	0	01	02	2
f.	Animal Rescue Calls	07	04	05	06	07	6
g.	Other Calls						
2	No. of Lives Saved	28	13	09	12	27	06
a.	No. of Lives Lost	42	04	51	46	40	03
b.	No. of Injured	28	13	09	12	27	03
3	Property Saved (Rs in Lakhs)						
A	Property Lost (Rs. In Lakhs)	273	503	243	212	509	239

31. Analysis of Incidents

Sr. No	Particulars	2005	2006	2007	2008	2009	2010
A.	Nos. of Fire/Rescue Calls received from 7:00 hrs to 19:00	355	367	334	392	540	605



B.	No. of Fire/Rescue Calls received from 19:00 to 7:00	119	188	163	152	168	120
----	--	-----	-----	-----	-----	-----	-----

C.	Planning, Resource Management & Incident Management: (Mutual Aid/ Assistance, Emergency Response and Operations, Developing and Implementing emergency response plan & procedures)	
32	Please provide the copy of Disaster Management Plan of the city	Enclosed as Annexure 3
33	Do you have any Mutual Aid with any Central or other State Govt. Authority for conducting fire & rescue operations? Please provide details.	Assistance taken from With Pune Municipal Corporation, National Disaster Reduction Force (CRPF) and Bombay Engineer Group and Centre
34	Is on site and offsite disaster managements Plan is in place for all vital installation, buildings and industrial plants. And is in sync with the district disaster management plan	Available with Major Accident Hazardous (onsite/offsite) companies & other Industries

35. Emergency Response Centres

Sr. No.	Name of Fire Station	Type of Construction of Fire Stations i.e RCC/Metal Shade/ Temporary Shade	Address	Telephone No	Fax No.
1	Pimpri Central Fire Station	RCC	S.T Nagar, Pimpri	020-27423333/ 27422405/ 9922501475	020-27420212
2	Bhosari Fire Station	RCC	Landewadi, Bhosari	020-27120090/ 9922501476	Nil
3	Pradhikaran Fire Station	RCC	Sector 23, Pradhikaran	020-27652066/ 9922501477	Nil
4	Rahatni Fire Station	Shed	Aundh Road,	020-27276749/	Nil



			Rahatni	9922501478	
--	--	--	---------	------------	--

36. Details of Fire and Rescue Applications made available in Fire Stations:

Sr. No.	Name of Fire Station	Number of Fire Tenders	Number of Rescue Tenders	No. of Ladders i.e. TTL/ALPs	Other fire or rescue Appliances
1	Pimpri Central Fire Station	08	02	Nil	-
2	Bhosari Fire Station	01	0	-	-
3	Pradhikaran Fire Station	01	0	-	-
4	Rahatni Fire Station	01	0	-	-

37. Summary of Fire and Emergency Services

Sr. No.	Type of Vehicles	Existing Nos.	Future Additional Requirement Plan
A	Number of Fire Station	4	15
B	Water Tenders	7	30
C	Rescue Tenders	1	14
D	Advance Emergency Rescue Tenders	0	05
E	Flood Rescue Tenders	1	05
F	Hazmat Vans	0	02
G	Turn Table Ladders (60 & 80 mtrs)	0	02
H	Hydraulic Platform	0	04
I	DCP Tenders	0	0



J	Foam Tenders	01	04
K	Mini fire Tender	02	6
L	Breakdown Van	0	02
M	Smoke Blowers	4	25
N	Control Post Vans (Communication & Command Vehicle)	0	01
O	Mobile Workshop for repair of Fire Appliances	0	01
P	Water Tankers (Bouser)	1	17
Q	Ambulances	0	15
R	Cars	01	02
S	Jeeps	1	02
T	High Pressure Portable Pumps	6	07
U	Portable Pumps	7	08
V	Breathing Apparatus Sets	20	40
W	Flood rescue boats	5	13
X	Life Jackets	40	310
Y	Communication Equipment (Fire Station- VHF, Smart Phones, Telephone, HAM Radio, GPS and Video Conferencing)	0	18 Set
Z	Communication Equipment (Vehicles- VTS	0	124 Sets



	and VHF)		
ZA	<p>Details of other Appliances & Equipment</p> <p>Including Lukas, Nike gears, Pneumatic Lifting Bags, Search Cameras, Gas Detectors, Thermal Imaging Cameras etc.</p>	0	5 each

38	Do you have Staff Quarters in Fire Station premises? Please provide numbers in each fire station	Only at Central Fire Station, Pimpri – 4Nos
39	Do you have a parade Ground in Fire Station compound?	No
40	Do you have a drill Tower in Fire Station Compound?	No
41	Is there Water Tank in Fire Station compound? If so pls give its capacity.	Yes. 2 Lakhs Litres
42	Do you have facilities to arrange training classes in Fire Station premises? Please give its capacity	No

43. Details of Officers & staff attached to Fire & Emergency Service

No.	Designation	Pay scale Rs.	Sanction Posts	Filled Posts	Vacant Posts
1	Chief Fire Officer	6500-10500	1	1	0
2	Dy. Chief Fire Officer	-	-	-	-
3	Divisional Fire Officer	-	-	-	-
4	Asst. Divisional Fire Officer	-	-	-	-
5	Station Officer	-	-	-	-



No.	Designation	Pay scale Rs.	Sanction Posts	Filled Posts	Vacant Posts
6	Assistant Station Officer	-	-	-	-
7	Sub Officer	5500-8500	8	2	6
8	Leading Fireman	4000-6000	17	12	5
9	Driver Operator	-	-	-	-
10	Driver	4500-7000	29	18	11
11	Fireman	3050-4590	101	71	30
12	Head Clerk	5500-8500	1	0	1
13	Dy. Accountant	5500-8000	0	1	0
14	Clerk	4000-6000	2	2	0
15	Asst. Storekeeper	4500-7000	1	1	0
16	Peon	2750-4400	1	1	0
	Total		161	109	53

D	Response Mechanism: (Communication, Warning and Operational Procedure)	
1	Centralized Control Room/Emergency Operation Rooms for Handling Disaster is provided or in operation	Yes
2	Internet connectivity is provided for all fire stations	No. Only Central Fire Station



3	Computerization of centralised control room is done. i.e. all the fire stations are connected with internet to Centralised control room	No. Only Central Fire Station
4	Communication System (Like VHF/UHF with details of Frequency should be given)	Yes. Base & Mobile and Walkie Talkie VHF sets
5	Any warning system is designed to alert the occupants in case of disaster (Tie ups with Radio, TV channels, Cable Channels-Yes (DMP) Mobile Service providers etc.	No
6	Is Systematic Operational Procedures (SoP's) are in place for responding to any emergency? Pls provide copies of SoP's	Yes. SOPs for attending Fire Emergencies.
7	Please provide cities digitized maps (which shows road, rail, airports, sea ports and other vital installations)	Enclosed in Compact Disc.
8	Is all fire appliances are provided with Global Positioning System devices i.e. GPS system. Provide details	No
9	Is all fire appliances are provided with vehicle tracking system? Provide details.	No
E. Training, Exercises, Evaluations and Corrective Actions		
1	Do you have any Fire & Emergency Training School/centre for imparting Training to your staff or public? Pls provide details	No
2	Type of training program conducted in the training school/centre	Not Applicable
3	Is the residential facility available in the training centre	Not Applicable
4	No. of class room available at the training centre	Not Applicable
5	No. of staff made available at the training centre	Not Applicable
6	Please provide the details of the Labs, Laboratory, Library, available at the training centre	Not Applicable
7	Any Auditorium, Convention Hall available in the training centre. Pls provide seating capacity.	Not Applicable
8	Does you impart training to outsiders or industries or public	Yes



F	Financial Management of Fire & Emergency Service: (Fire Tax, Fire Cess, Capitation Fees, Service Charges etc.)	
1	What are the statutory instruments (Special Act, Corporation Council Acts/Rules) to levy taxes/Cess as service charge? Please give details thereof	BPMC Act, 1949
2	Do you recover Fire Tax or Cess from the properties in the city? Please provide circular or office order	Yes. (2% of the rateable value of the property)
3	Do you levy any other fees or tax for special or High Rise buildings? Please provide a copy of circular	Yes. Copy enclosed as Annexure 4
4	Any fees levied for grant of Fire Approvals for buildings. Please provide a copy of circular	Yes. Copy enclosed as Annexure 4
5	Do you charge any special charges for standby duties or service rendered? Please provide circular	Yes. Copy enclosed as Annexure 4
6	Do you have a separate fund for up-gradation of fire and emergency services	Yes. Fire Protection Fund

7. Details of Expenditure of Fire Service

(Rs. In Lakhs)

Sr. No.	Year	Establishment Expenditure	Maintenance Expenditure	Civil Expenditure	Other Expenditure (Vehicle & POL-Petrol Oil & Lubricants)
1	2004-05	119.09	0.15	-	-
2	2005-06	135.89	0.95	-	-
3	2006-07	137.09	-	-	-
4	2007-08	159.93	-	-	15.15
5	2008-09	193.13	0.22	-	60.10
6	2009-10	225.15	0.26	25.10	-



8. Details of Future Plan

(Rs. In Lakhs)

Sr. No.	Year	Fire Service Expenditure	% of Expenditure of Fire Department with respect to funds allocated
1	2010-11	1185	-
2	2011-12	974	-
3	2012-13	1245	-
4	2013-14	940	-
5	2014-15	1209	-

Note: Department is self-funding its expenditure from Fire Departments Fire Protection Fund.

9. Give details about the income received by your Fire Service

(Rs. In Lakhs)

Sr. No.	Year	Income Received				
		Fire Tax	Fire Fee	Fire Service Charges	Capitation Fee	Any Other
1	2004-05		51.59	Included in Fire fee	Nil	-
2	2005-06		52.55	Included in Fire fee	Nil	-
3	2006-07		250.60	Included in Fire fee	Nil	-
4	2007-08		118.23	Included in Fire fee	Nil	-
5	2008-09		113.62	Included in Fire fee	Nil	-
6	2009-10		212.25	Included in Fire fee	Nil	-
7	2010-11*		1285	Included in Fire	Nil	-



				fee		
--	--	--	--	-----	--	--

* Figures until February 2011

G.	Human Resource Management	
a.	Manpower Planning	
b.	Number of post sanctioned and vacant	As given in C-43
c.	Recruitment Procedure i.e.	
1.	Recruitment Rules	Yes
2.	Group Discussions	No
3.	Personal Interview	Yes
d.	Training and Development	
1.	Induction Training	Yes
2.	Refresher Training	Yes
3.	Motivation Training	Yes
4.	Special Skill Training	National Fire Service Collage, State Fire Training Centre, National Disaster Reduction Force & YASHADA
5.	Any Other Demonstratation etc	Mock drills & Combined Exercises with Industries, Commercial establishments and Defence
e.	Carrier and Successor Plan	No
f.	Migration Plan	No
g.	Retirement	As per State Govt. Rules



h.	Plan for utilisation of retired persons services	No
----	--	----



Personal Details of each employee of Fire Department

Sr. No.	Name	Local Address	Birth Date	Education	Completed Courses & Name of Organisation	Blood Group	Extra Curricular Activity	Physical Fitness Details (Serious Sickness if any)	Nos. of Member in Family	Member of Welfare Association Yes/No	Years of Blood Donation
1	Gawde Kiran Balmukund	6, Renuka Residency CHS, Bijjinagar, Chinchwad Pune – 33	26/10/1964	B.A, M.B.A.	Sub-Officer, Station Officer, Divisional Officer, NFFC, Nagpur, Grade I Fire India, New Delhi	A +ve	-	Nil	5	Yes	2007
2	Pawar Balasaheb Murrhidhar	Rupinagar, Talwade	01/12/1953	B.A	Sub Officer, Station Officer, National Fire Service College, Nagpur	B +ve	-	Nil	5	No	1974
3	Wankhede Uday Madhavrao	Madanmohan Housing Society, Kamgaarnaga, Nr. Mahindra Company, Pimpri – 17	30/05/1966	B.A	Sub Officer, Divisional Office National Fire Service College, Nagpur	B +ve	-	Nil	4	Yes	2008
4	Guring Arvind	No. 403, Atmanagar, Kralwadi Pimpri Pune	01/06/1963	SSC	No	O +ve	-	Body Paralysis	5	No	



5	Jagtap Arvind	No. 260/1/4 Gyandeeep, Colony, Srinagar, Rahatni, Pune	03/04/1951	SSC	Sub Officer, Divisional Office National Fire Service College, Nagpur	Positive	-	Nil	4	Yes	2007
6	Gaund Sampat	Koyna Housing Society, Rupinagar, Talwade Pune	05/09/1967	SSC	No	Positive	-	Body Paralysis	5	No	
7	Kute Ramdas	Chetanya Housing Society, Morevasti, Chikhli	01/06/1955	4 th Pass	Fireman Ra.A.Pra.K		-	Head Surgery	5	No	
8	Fuge Ananta Ramchandra	Atmanagar Housing Society Plot no 402, C Building Kharalwadi, Pimpri	01/06/1953	8 th Pass	No	Positive	-	No	6	No	
9	Aangre Suresh	Sant Tukaram Nagar, Nr. Shri. Krishna Mandir. Bhosari, Pune	01/06/1954	7 th Pass	No	Positive	-	Heart Treatment	6	No	
10	Shingade Naamdev	Subhankar Nagari, Plot no 2, D Wing, Vikas Nagar, Kiwle, Pune	14/09/1964	SSC	Fireman Ra.A.Pra. K, Mumbai	Positive	-	No	5	Yes	1976



11	Thakur Sanjesh	Plot no 305, C1, Karmyog CHS, Kaamgarnagar, Pimpri Pune	01/06/1967	SSC	Fireman Ra.A.Pra. K, Mumbai	A +ve	-	No	5	Yes	
12	Chatur Gorakhnath	Plot no 6, Building no 2, PCMC Colony, Pimpri	01/06/1957	11 th Pass	No	A +ve	-	No	5	Yes	
13	Fatangde Mahadev	House No 27, Duttanagar, Nigdi, Pune	01/06/1952	9 th Pass	No	A +ve	-	Heart Treatment	5	Yes	
14	Kanade Ashok	Limbachi Talim, Bhosari Pune	01/06/1962	SSC	No	A - ve	-	No	5	Yes	
15	Malekar Gyanoba	Mu. Thergaon, Thergaon, Mulshi, Pune	1/1/1961	SSC	No		-	No			
16	Ghogre Suresh	Pimple Saudagar, Swaraj Garage Pimple Gurav, Aundh Camp, HAveli, Pune	1/6/1960	SSC	No	O +ve	Swimmer	No	4	No	
17	Kate Shantaram	Bhatnagar, Pimpri, Pune	21/07/1963	B.A	No	B +ve	Sports person	No	5	No	



18	Batungey Bhaidas	C 22, Kunar Park, Keshavnagar, Cinchwadgaon, Pune	2/5/19 62	B.Com	No	-	-	Diabetes			
19	Mathpati Suryakant	Takshila CHS, R Building, Subhedar Ramji Ambedkar Nagar, Pimpri Camp, Pune	4/10/1 964	SSC	No	O +tve	-	No	6	No	
20	Ingawle Ashok	Plot no T9, Monika Center, Kaamgaar nagar, Pimpri Pune	8/6/19 65	HSC	No			No	5	No	
21	Kamble Dilip	Shikshak Society, Ingawle Nagar, Pimple Nilkah, Aundh Camp Pune	6/5/19 64	SSC	No	AB +ve	Rock Climbin g	No	8	Yes	1979
22	Yamgar Bhagwan Krishna	S no. 36, Wadgaonsheri, Pune	1/6/19 61	11 th Pass	No	O +tve		No	4	Yes	



23	Hinge Ramdas	Gorwale Park, H 1 Building, Plot no 9, Chinchwadgaon, Pune	16/5/1956	SSC	No				No	5	Yes	
24	Tapkir Narayan	Plot no B 28, Sainath Society, Pimpri	3/6/1965	7 th Pass	No		A +ve		No	5	No	
25	Tapkir Arjun	Ganga Nagar, Fursungi, Haveli, Pune	2/6/1960	9 th Pass	No		B +ve		No	3	No	
26	Devkar Ankush	Mu Po Ku Ruri, Taluka Khed, Pune	1/6/1961	SSC	No		A +ve		No	7	No	
27	Bhujbal Vilas	S No. 76, Bharat Mata Nagar, Dighi Pune	1/1/1960	7 th Pass	No				Night Blindness			
28	Gaikwad Sunil	Shramsafalya Nivas, Ramnagar, Bopkhel Pune	1/6/1963	7 th Pass	No				Body Paralysis			
29	Bagde Hiranman	Indrayani Vihar, Santnagar, Lohegaon	1/8/1961	7 th Pass	No				No	6	No	



35	Kakare Nitin	Kailas Nagar, Pawar Mini Market, Thergaon Pimpri	21/2/1975	8 th Pass	No							4	No	
36	Sakhre Sachin	Kunal Plaza, Chinchwad Pune	5/2/1981	8 th Pass	No							4	No	2010
37	Ranjane Amol	Ma. Pu. Alewadi, Taluka, Jawli, Satara	5/5/1977	HSC	No							3	No	
38	Borvake Padmakar	Charholi Chowisvadi, Pune	1/7/1970	11 th Pass	No							5	No	
39	Pansare Sushil	Banekar Chawl, Near Telephone Exchange, Pimpri Gaon, Pune	1/6/1971	9 th Pass	No							6	No	
40	Fadtare Vishal	Mu Post Manjari Falikanagar, rm,	29/4/1971	HSC	No							4	NO	
41	Banekar Vishal	Titkare Chawl, Pimpri Gaon, Pune	21/2/1983	SSC	No							6	No	
42	Thube Namdev	Mu. Po. Kuruli, Khed, Pune	2/3/1954	SSC	No							7	No	



Fire Hazards Response and Mitigation Plan – Pimpri Chinchwad

43	Chinchwade Tanaji	Pimpri Gurav, Aundh Camp, Pune	2/6/19 65	SSC	No	O +ve	-	No	6	No	
44	Chavhan Pratap	Appa Nivas, Nr. Mahadev Mandir, Fugewadi	1/5/19 65	SSC	Fireman Ra. A. Pra. A Mumbai, National Fire Service College, Nagpur			No			
45	Malekar Bapusahib	Beltikanagar, 16 no bus stop, shivdarshan nagar, thergaon, Pune	3/12/1 965	HSC	No	A +ve		No	5	No	
46	Dharade Bhausahib	Opp Chinchwad Farm Mangal Karyalay, Walhekarwadi, Chinchwad Pune	1/6/19 64	B A	No	A +ve	Sports Person	No	6	No	2005
47	Lande Subhash	Mu. Vadgaon Maval, Vadgaon, Pune	1/6/19 65	B A	No	O - ve	Sport Person	No	5	No	
48	Sankpal Ashok	S no. 101, Malekar Nivas, Nehru Nagar, Pimpri, Pune	24/9/1 957	9 th Pass	No	A +ve		No			



49	Bhandari Suresh	Pimpri Gurav, Jagtap Diary, Aundh Camp, Pune	13/12/1966	SSC	No					Blood Pressure			
50	Jagtap Samhaji	Abhay Niwas, Ram Mandir, Sriram Vidhya Mandir, Sriram Nagar, Bhosari, Pune	13/5/1956	SSC	Fireman Ra.A.Pra.Ke, Mumbai					Blood Pressure			
51	Waghare Kailash	A 1 Radhanagari, Sandvik Road, Bhosari Pune	19/5/1969	SSC	No					No			
52	Tayde Shaligram	Pimple Suadagar, Haveli, Pune	15/10/1955	SSC	No				A +ve	No	6	No	
53	Takawle Shivaji	Vijaynagar Sai Colony, Opp Jyotiba Mangal Karyalay, Karlwadi, Pune	5/4/1962	SSC	No				A +ve	No	6	Yes	2002
54	Dongare Kailas	Kinnaie Gaon, Behind Ordnance Factory, Dehu Road, Pune	11/9/1961	9 th Pass	No				A +ve	No	7	No	1993



Fire Hazards Response and Mitigation Plan – Pimpri Chinchwad

55	Wakchaure Sharad	Mu. Po. Uruli Kanchan, Haveli, Pune	1/6/19 57	HSC	No	A +ve	-	No	6	No	
56	Dimble Anil	G 28, Shree Residency Phase II, Ganesh Nagar, Pune	15/10/ 1970	11 th Pass	Fireman Ra. A. Pra. A Mumbai, National Fire Service College, Nagpur	B +ve	-	No	6	No	
57	Bhalekar Gulabrao	S No. 4, Plot no 12, Samarth Nagar, Dighi Pune	1/7/19 58	SSC	No	A +ve		No	4	No	
58	Tukdeo Somnath	10/1, 16 B, Tirupati Nagar, Vishwadharam Building, Warje Naka, Pune	21/7/1 972	HSC	No		-	No			
59	Gawli Rajendra Kumar	Mu. Po. Talwade Jyotiba Nagar, Haveli, Pune	20/1/1 961	SSC	No	A +ve	-	No	4	Yes	
60	Patole Ramdas	Namdev Bartakke Chawl, Sant Tukaram Nagar, Nr. HDFC Bank, New Sangvi	3/8/19 71	HSC	No	B +ve	-	TB	5	Yes	



Fire Hazards Response and Mitigation Plan – Pimpri Chinchwad

61	Kamble Jalinder	95, Sant Mohalla, Khadki, Pune	1/6/19 60	8 th Pass	No			No				
62	Pawar Ashok	A/5 Sukhwani Bagh, Adinath Nagar, Ghavne Vasti, Bhosari Pune	10/3/1 955	SSC	No	O – ve	-	No	4	No		
63	Gajare Ramdas	Hingne Khurd, Mahadev Nagar, Singhagadh Road, Pune	2/12/1 959	9 th Pass	No	O +ve	-	No	2	No		
64	Dhavte Gyaneshwar	Plot no 1, Shreprasad Appt, Warje	1/6/19 57	SSC	No	B +ve	-	No	6	No		
65	Kadam Ashok	S No 49, Raigad Colony, Rahatni, Pune	1/6/19 61	SSC	No	O +ve	-	No	4	No		
66	More Manoj	Mu Po Shirur, Suradwadi, Pune	1/8/19 67	11 th Pass	No	A +ve	-	No	5	No		
67	Gawri Babusha	Jayawan Nagar, Yerwada Pune	1/7/19 72	11 th pass	No		Writing Poetry	No				



68	Chauhan Manoj	S No 124, Ashirvad Colony, Jadhav Vasti, Kalas Pune	25/7/1963	SSC	No	A +ve	-	No	4		
69	Valke Ramdas	S no 28, Mansai, Munjoba Vasti, Dhanori	1/9/1957	SSC	No	A +ve		No	5	No	
70	Kadam Krishna	Chnadrarang Complex, Ram Nagar, Pimple Gurav, Pune	20/6/1960	SSC	No	O +v		No	5	Yes	
71	Shinde Sampat	Jay Jawan Nagar, Yerwada Pune	1/6/1960	8 th Pass	No	O +ve	-	No	4	Yes	
72	Ghadge Gorakhnath	Munjaba Vasti, Dhaonri, Pune	10/4/1959	11 th Pass	No	A +ve		No	4	Yes	
73	Valke Subhash	Plot no 394, Jayawan Nagar, Yerwada Pune	1/6/1956	SSC	No	B -ve		No	11	No	
74	Waghe Namdeo	Sr no 72/5, Sai Park Sainik Colony, Dighi	14/10/1973	SSC	No	O +ve		No	4	Yes	2005
75	Rajpure Ramesh	Sajjangad Colony, Rahatni, Pune	24/9/1959	SSC	No		-	No			



76	Pawar Bajrang	Mu Po Karade, Taluka Shirur, Pune	9/12/1 959	SSC	No				-	Blood Pressure			
77	Patil Shankar	Sr no 84/2/3, Sinhagadh Colony, Jawarkar nagar, Pimple Gurav, Pune	1/5/19 60	SSC	No		A +ve		-	No	5	Yes	
78	Kadu Vilas	Sanket Residency, Sr no 686, Adinath Nagar, Bhosari Pune	4/12/1 969	11 th Pass	No		O +ve		-	No	6	Yes	
79	Falke Bharat	Duttawadi, Akurdi Pune	3/7/19 61	SSC	No		A +ve		-	No	4	No	2010
80	Mhetre Namdeo	Sr no 18/1, Plot no 27, Shivaji Marg, Sambhaji Nagar, Dighi, Pune	1/6/19 61	SSC	No		O +ve		-	No	5	Yes	1983
81	Pawar Ashok	Mu. Mhetre Vasti, Po. Chikhli, Haveli, Pune	1/6/19 57		No		A +ve		-	No	5	Yes	



82	Farande Sunil	Sr. no 84/1, Plot no 3, Sai Park, Dighi, Pune	15/10/1970	HSC	Fireman Ra. A. Pra. Ke, Mumbai	B +ve	Sport Person	No	5	Yes	March 2010
83.	Sheikh Nasir	Mu. Po. Urlikanchan, Ashram Road, Haveil Pune	29/1/1960	SSC	No		-	Heart Treatment	4	No	
84	Chauhan Vishnu	S. no. 18/2, Sanval Park, Alandi Road, Pune	1/6/1962	SSC	No	O +ve	-	No	5	No	
85	Kadam Jayram	Opposite Aryasatya Mansarovar complex, Sant Tukaram Nagar, Bhosari Pune	6/9/1962	9 th Pass	No		-	No			
86	Jhankar Shivial	S no. 22. Annabhau Sathe Vasahat Nigdi, Pune	13/12/1963	9 th Pass	No	A -ve	-	No	6	No	
87	Patil Suryakant	S no 22, Dr. Babasaheb Ambdekar Nagar, Indiranagar, Nigdi, Pune	8/9/1959	11 th Pass	No	AB +ve		No	5	Yes	



88	Sarote Santosh	Krupachatra, PCMT Chowk, Nr. Bhosari Division Office, Bhosari, Pune	12/3/1968	B.Com	No	O +ve	-	No	5	No	
89	Patil Vilas	Landge Vasti, Nashik Road, Bhosari, Pune	18/1/1967	SSC	No	A +ve	-	No	4	Yes	2006
90	Pimpri Ashok	S no. 18, Plot no 10, New Majid Road, Chowdhary Park, Dighi, Pune	21/5/1965	8 th Pass	No	A +ve	-	No	4	Yes	
91	Kumbhar Shivappa	Vishal Garden, Mu. Po. Chakan, Khed	1/6/1956	SSC	No	B +ve	-	No	4	Yes	
92	Ingavle Gautam	S no 3, Plot no 241, Dighi Pune	21/3/1976	SSC	No	B +ve	-	No	4	No	2009
93	Gaikwad Dilip	Mu. Po. Ganesh Nagar, Bholawade, Bhor, Pune	3/5/1971	SSC	No		Writing Poetrie s	No			
94	Vairagar Srikanth	Patil Sankul, Krishna Chowk, New Sangvi	19/5/1984	SSC	No	B +ve	Writing Poetrie s	No	6	No	



95	Chandan Shive Shahji	Mu. Po. Dhakre, Baramati, Pune	1/6/1969	9 th Pass	No	No	Reading	No	5	No	2006
96	Nikajje Kiran	Rupal Florence, D 5, Sector 21, Yamuna Nagar, Nigdi, Pune	10/12/1985	SY B.Com	No	B +ve	Reading	No	4	No	2005
97	Avtare Sambhaji	B 3/11, Raviraj Terrace, Sukhsagar Nagar, Pune	13/5/1979	B. Com	No	-	-	No			
98	Kamble Pradeep	Gut no. 1401, Nandanvan Housing Society, Morevasti.	18/9/1963	B. Com	No	A +ve	-	No	2	Yes	
99	Hole Hanumant	Flat no 10, F wing, Sukhvani Enclave, Waghore Colony, Pimpri Gaon Pune	1/7/1969	SSC	No	O +ve	Reading	No	5	No	2001
100	Ingalkar Dinesh Devidas	Vinayak Nagar, New Sangvi, Pune.	22/5/1967	HSC	No	A +ve	-	No	4	Yes	
101	Ghule Chandra Shekhar	Room no 83, Aniket CHS, Mhada Colony, Morewadi Pune	27/6/1981	B A	Fireman Ra. A. Pra. Ke, Mumbai	AB +ve	NCC Cert, Sport Person	No	5	No	2007



102	Gughe Vijay	Jeejamata Hospital Nursing Qtr no 6, Pimpri Pune	20/1/1983	B.Sc.	Fireman Ra. A. Pra. Ke, Mumbai	O +ve	NCC Cert, Sport Person	No	5	No	2009
103	Vaidya Balasaheb	209/1466, Sant Tukaram Nagar, Pimpri Pune	3/7/1981	B.A	Fireman National Fire Academy, Pune	AB +ve	Sport Person	No	3	No	2009
104	Nale Vinayak	Indrapasth CHS, Medankarvadi, Chakan, Pune	4/1/1979	B. Com	Fireman National Fire Academy, Pune	B +ve	Sport Person	No	5	No	2010
105	Naik Vikas	52/4, Mahatma Phule Peth, Pune	18/5/1981	B. Com	Fireman National Fire Academy, Pune	O +ve	Sport Person	No	3	Yes	2010
106	Mugrukar Sarang	S no. 27 A, House no 12/02, Lal Bahadur shastru Nagar, Pradhikaran , Nigdi, Pune	5/7/1982	HSC	Fireman National Fire Academy, Pune		Painter	No		No	
107	Vhamne Shahu	Thegaon Gaothan, Suresh Dogere Nivas, Thergaon Pune	1/6/1982	HSC	Fireman National Fire Academy, Pune	O +ve	Writing Poetrie s	No	5	No	2005



Fire Hazards Response and Mitigation Plan – Pimpri Chinchwad

108	Chowdhary Mahesh	Room no 10, Nursing Quarter, Jeejamata Hospital, Pimpri, Pune	26/10/1978	HSC	Fireman Ra. A. Pra. Ke, Mumbai		Sport Person	No	3	No	
109	Patil Milind	Nursing Quarter, Jeejamata Hospital, Pimpri, Pune	26/8/1975	HSC	Fireman Ra. A. Pra. Ke, Mumbai	B +ve	Sport Person	Knee Pain	5	No	2007
110	Ghuse Vitthal	Staff Nurse Colony, Pune	3/5/1979	HSC	Fireman Ra. A. Pra. Ke, Mumbai		Sport Person	No	3	No	
111	Wagh Anil	Mu. Po. Kuruli, Khed, Pune	29/08/1984	HSC	Fireman National Fire Academy, Pune	B +ve	Sport Person	No	3	No	2009
112	Todarmal Vikas	B 106, Khe no 9. Upper Indiranagar, Bibvewadi, Pune	20/1/1986	B. Com	Fireman National Fire Academy, Pune		Sport Person	No	4	No	2010



8 FUNDS REQUIREMENT

Based on the vulnerability assessment and National Disaster Management guidelines for revamping fire services, PCMC requires One Headquarter/Central Fire Station, 2 Divisional/ Zonal Fire Station and 15 fire stations for managing effectively fire services in an area of 177 sq. km. The details are provided under section 8.5.1

8.1 Equipments Requirement

The equipment requirements are classified based upon the minimum requirement specified in National Disaster Management Guidelines for revamping fire services by NDMA.

8.1.1 Equipment for Headquarter and Divisional Stations

Table 14: City's Headquarter (1) and Divisional (2) Fire Station Equipment Requirement

Sr. No.	Equipments	NDMA Specifications (Minimum)	NDMA Norms for Single Station (Minimum)	PCMC Requirement (3 Stations)
1	Turn Table Ladder	50 mts	-	1 Nos (60 mtr) 1 Nos (80 mtr)
2	Hydraulic Platform	45 mtr	1 Nos	2 Nos (42 mtr)
3	Hazmat Van	-	1 Nos	2 Nos
4	Advance Emergency Rescue Tenders	-	1 Nos	2 Nos
5	Water Tender	-	2 Nos	6
6	Flood Rescue Tender	-	-	2
7	Control Post Vans (Communication & Command Vehicles)	-	-	01 Nos
8	Breakdown Van	-	-	2 Nos.



9	Water Bouser	10,000 ltr	1 Nos.	3 Nos
10	High Pressure Portable Pumps	-	1 Nos	3 Nos
11	Flood Rescue Boats	-	-	2 Nos
12	Mobile workshop for repair of Fire Appliances	-	-	1 Nos
13	Smoke Blowers	-	-	10 Nos
14	Cars	-	-	3 Nos
15	Jeep	-	-	3 Nos
16	Breathing Apparatus	-	-	10 Nos
17	Life Jackets	-	-	100 Nos
18	Communication Equipment (Fire Station- VHF, Smart Phones, Telephone, HAM Radio, GPS and Video Conferencing)	-	-	3 Set
19	Communication Equipment (Vehicles- VTS and VHF)	-	-	29 Set
20	Details of other Appliances & Equipments – Including Lukas, Nike gears, Pneumatic Lifting Bags, Search Cameras, Gas Detectors, Thermal Imaging Cameras etc.	-	-	3 Sets of each

8.1.2 Equipment for Fire Stations

Table 15: City's Fire Station Equipment Requirement

Sr. No.	Equipments	NDMA Specifications (Minimum)	NDMA Norms for Single Station (Minimum)	PCMC Requirement (15 Fire Stations)
1	Water Tender	-	02 Nos.	30 Nos
2	Rescue Tender	-	01 Nos	15 Nos
3	Hydraulic Platform (42 mtrs)	-	-	2 Nos
4	Foam Tender	-	-	5 Nos
5	Flood Rescue Tenders	-	-	3 Nos
6	Hazmat Vans	-	-	-
7	Advance Emergency Rescue Tenders	-	-	3 Nos
8	Ambulance	-	01 Nos	15 Nos
9	Mini/Small Fire Tender	Mini/Small	01 Nos	8 Nos
10	Water Bouser	10,000 ltr	1 Nos	15 Nos
11	Smoke Blowers	-	-	15 Nos
12	High Pressure Portable Pumps	-	-	10
13	Portable Pumps	-	-	15
14	Breathing Apparatus Sets	-	-	50

Sr. No.	Equipments	NDMA Specifications (Minimum)	NDMA Norms for Single Station (Minimum)	PCMC Requirement (15 Fire Stations)
15	Flood Rescue Boats	-	-	15
16	Life Jackets	-	-	250
17	Communication Equipment (Fire Station- VHF, Smart Phones, Telephone, HAM Radio, GPS and Video Conferencing)	-	-	15 Set
18	Communication Equipment (Vehicles- VTS and VHF)	-	-	95 Set
19	Details of other Appliances & Equipments – Including Lukas, Nike gears, Pneumatic Lifting Bags, Search Cameras, Gas Detectors, Thermal Imaging Cameras etc.	-	-	3 Sets of each

8.2 Structure Requirement

The structure design for Master Station and Fire Station is based on the Type I design approved by Director of Maharashtra Fire Services. The location for existing and proposed Master Station and Fire station is detailed in Annexure 5. The master fire station will consist of

1. Central Control Room and Office
2. Disaster Allied service office
3. Vehicle Bay for housing 4 Fire engine + 2 for future expansion
4. Simulation Drill Tower and Smoke Room
5. Fire training building



6. Drill & Parade Ground with flag pole & Martyr Column
7. Vehicle Workshop
8. Equipment Store
9. Fire Water Under Ground Tank (5 lakhs litre)
10. Swimming Tank (25X15X20 Cu.ft. for training)
11. Training Hall & Model Room
12. Petrol Pump
13. Fitness Centre (Gymnasium & Meditation Centre)
14. Vehicle Design & Research and Development Centre
15. Residential Quarters (70 residential quarters)
16. Dormitories (staff resting place in emergency)
17. Garden & Landscaping

The fire station will consist of

1. Control Room and Office
2. Vehicle Bay for housing 2 Fire engine + 1 for future expansion
3. Vehicle Workshop
4. Equipment Store
5. Residential Quarter (35 residential Quarters)
6. Dormitories (staff resting place in emergency situation)
7. Drill & Parade Ground with flag pole & Martyr column

The design documents are enclosed as Annexure 5.

8.3 Manpower Requirement

As per NDMA Guidelines, for operating 1 Headquarter/Central, 2 Divisional/Zonal and 15 fire stations the manpower requirements is detailed below.

Table 16: Fire Station Manpower requirement

No.	Posts	NDMA Norms (As per posts)	NDMA Norms (as per appliances)	NDMA Norms (as per Station)	PCMC Proposed requirement
-----	-------	---------------------------	--------------------------------	-----------------------------	---------------------------



No.	Posts	NDMA Norms (As per posts)	NDMA Norms (as per appliances)	NDMA Norms (as per Station)	PCMC Proposed requirement
1	Chief Fire Officer	3 (Central Station):1 Ratio	-	1	1
2	Deputy Chief Fire Officer	3 (Central Station):1 Ratio	-	1	1
3	Divisional Fire Officer	1 (Central Station):1 Ratio	-	2	2
4	Asst. Divisional Fire Officer	3 (Fire Station):1 (ADFO)	-	5	5
5	Station Officer	1 (Fire Station):1 (STO)	-	31	18
6	Asst. Station Officer	1 (Shift):1 (ASTO)	94	94	35
7	Training Instructor		-	-	01
8	Leading Fireman	1 (vehicle) : 1 (LFM)	86	152	95
9	Fireman	-	315	484	300
10	Driver	-	187	324	150
11	Watch Room Operator	-	-	90	40
12	Administrative Officer	-	-	-	1
13	Office Superintendent	-	-	-	2



No.	Posts	NDMA Norms (As per posts)	NDMA Norms (as per appliances)	NDMA Norms (as per Station)	PCMC Proposed requirement
14	Sr. Accountant/Sr. Auditor	-	-		2
15	Dy. Accountant	-	-		2
16	Statistician cum Record Keeper	-	-	-	2
17	Clerk	-	-	18	20
18	Computer Operator	-	-		4
19	Storekeeper	-	-	-	2
20	Asst. Storekeeper	-	-		4
21	Foreman	-	-		2
22	Diesel Mechanic	-	-		5
23	Fire Pump Mechanic	-	-		4
24	Auto Electrician	-	-		3
25	Helper	-	-	-	10
	Total		682	1202	711

8.4 Existing Situation of Fire Services at PCMC

The existing situation of fire preparedness at PCMC based on equipment, structure and manpower is detailed below.



8.4.1 Existing Fire Fighting Equipments

There are 12 fire tenders vehicles distributed in the four fire stations of PCMC catering a population of 15 lacks. The number of vehicles per population is less than the required number of vehicles as stipulated in the NDMA guidelines.

The Fire Department of Pimpri Chinchwad Municipal Corporation currently has Water Tenders of 'B' Type (composite), Water Tender Type 'B', Combined Foam, CO2 and DCP Tender, Water Bouzer, Rescue Tender, Mini Water Tender and Emergency Responsible Vehicle. The details of the existing vehicles are given as follows:

Table 17 : Existing Fire Appliances with Fire Department

No	Types of Appliance	Strength	Features
1	Water tender "Type B" Composite	4 Nos	4500lts. Water, CO2(20kgs)-2no DCP (70kg)-2nos,P.Pune,etc.
2	Water Tender "Type B"	3 Nos.	4500 lts Water Capacity.
3	Combined Foam, Co2, DCP, Tender	1 No.	4500 lts w.c,CO2,DCP, etc
4	Water Bouzer (Tanker)	1 Nos.	10,000 lts Water Capacity
5	Rescue Tender	1 No.	Cutting, Breaking, Lifting, Pulling, Lightning, Chemical Handling & Other Life Saving.
6	Mini Water Tender	2 Nos.	2500 lts Water capacity.
7	Emergency Response Vehicle	1 No.	Emergency Equipments and Crew Carrier.

8.4.2 Other Equipment

Different types of Equipments, appliances and rescue materials are available with the fire department of PCMC. Some of these need to be upgraded and few of them should be replaced for effective fire fighting instances, tackle the problems of fire calls of high-rise buildings in any in the future.

Table 18: Other equipments of the Fire Department

S.No	Equipment type	Nos.
------	----------------	------



Flood Control Special Equipments		
1	Inflatable Rubber Boats (4 person cap)	5
2	Out Board Motor (2 & 4 hp capacity)	3
3	Life Jackets	65
4	Ropes	20
5	Hooks	15
6	Wood cutting chain saw	15
7	Portable Pump (Petrol)	4
8	Portable Pump (Diesel)	9
9	Inflatable life jackets	2
10	Air Lifting Bags	2
Others		
11	B.A.Sets (45 Mins)	20
12	Smoke exhauster foam generator	4
13	Fire Proximity suits	2
14	Chemical Handling suits	2
Communications		
15	V.H.F Wireless Sets	18



8.4.3 Existing Structure and Facilities

There is currently one central fire station located at Sant Tukaram Nagar in Pimpri. Along with the central fire station, there are three sub fire stations present in the city of Pimpri Chinchwad. The details about the fire stations in Pimpri Chinchwad are as below:

Table 19: Fire Stations at Pimpri Chinchwad

No.	Name of Fire Station	Location	Tel.No.
1	Gen. Arunkumar Vaidya Central Fire Station	Sant Tukaram Nagar, Pimpri, Pune-18	020- 2742 3333 020 -2742 2405.
2	Pradhikaran Station	S.No.23, Pradhikaran, Pune-44	020-2765 2066
3	Bhosari Sub Station	Old P.C.M.T. Depot Bhosari,Pune-26	020-2712 0090
4	Rahatni Sub Station	S.No.10, Aundh Road, Kalewadi Phata, Rahatni.	020-2727 6749.

Besides the mentioned generic fire station, Industrial Fire Services are also installed at major industrial cluster in PCMC area. The details of the Industrial Fire Services are as below:

Table 20: Fire Service Facility with Companies at Pimpri Chinchwad

Sr. no	Company Name and Address	Resources	Manpower	Contact
1	Tata Motors Ltd., MIDC, Pimpri, Pune – 18	1 Fire Tenders 2 Fire Tankers	8	020-5613 2772
2	Tata Motors Ltd., Chinchwad, Pune	1 Fire Tender	7	020-5613 5555
3	Bajaj Auto Ltd., Mumbai – Pune Road, Akurdi, Pune – 35	2 Fire Tenders 1 Trailer Pump	13	020-2740 6224
4	Bajaj Tempo Ltd., Mumbai – Pune Road, Akurdi, Pune – 35	1 Fire Tender	6	020-2747 6381
5	Century Enka Ltd., MIDC, Bhosari, Pune	1 Fire Tender	7	020-6612 7300

8.4.4 Existing Manpower

Currently out of 161-sanctioned post in the Fire Department, only 109 are filled and the rest 53 post lie vacant. A majority of the vacant lying posts are from the fireman cadre followed by drivers. The details about the sanctioned, filled and vacant post are as given below:

Table 21: Manpower of Fire Department

No.	Designation	Pay scale Rs.	Sanction Posts	Filled Posts	Vacant Posts
1	Chief Fire Officer	6500-10500	1	1	0
2	Sub Officer	5500-8500	8	2	6
3	Leading Fireman	4000-6000	17	12	5
4	Head Clerk	5500-8500	1	0	1
5	Dy. Accountant	5500-8000	0	1	0
6	Clerk	4000-6000	2	2	0
7	Asst. Storekeeper	4500-7000	1	1	0
8	Driver	4500-7000	29	18	11
9	Fireman	3050-4590	101	71	30
10	Peon	2750-4400	1	1	0
	Total		161	109	53

8.5 GAP Analysis & Funding Requirement

The Fire department functions according to the provisions of Bombay Provincial Municipal Act 1949, Section 63(5) and Section 285 where of it is required to maintain and keep fire equipments and appliances for the protection of life and property from fire.



Due to addition of 18 more villages, the area of PCMC has increased to 177 sq.km and its present population of almost 15 lakhs. The vast development has also increased the numbers of slums, markets, high-rise buildings, major industries, vast population, and large industrial area of around 3500 small and large factories. The following are the major areas, which needs attention and improvements for the up gradation of the Fire Service to cater to the fire risk as detailed in section 4.

8.5.1 Physical Infrastructure

➤ Central Fire Station

A well equipped central fire station, with facilities of parade ground, workshop, training halls, residential facilities, vehicles testing ground, drill tower, meeting/ conference room, smoke room, simulation room, dormitory, etc. The total area needed to be min. of 5 acres for central fire station and 1 acre for fire station use.

Based on the NDMA guidelines for million plus cities, One Headquarter/Central Fire station and two Divisional/ Zonal Fire Station (for eight fire stations) is proposed. Since PCMC has a population of 1.5 million and based on the fire risk scenario prevailing in the city (as detailed in section 4), PCMC has proposed one Central and two Divisional fire stations. The funding requirement for the central fire stations proposed at Bhosari and Divisional Fire station at Chinchwad and Dighi is **Rs. 35 Crs.** The equipment requirement and its costing is been detailed below.

➤ Fire Stations

The present number of Fire Stations does not cope up with the present needs and seeks reformation as per the NDMA guidelines. NDMA guidelines states a fire station for every 10.36 sq. km. Based on the above criteria for covering 177 sq. km area 18 fire stations are required. Since, PCMC has four existing fire stations and is proposing to setup one Central and two divisional fire station; additional twelve (since one of the existing fire station will be upgraded to Central fire station) fire stations are required. The fire stations needs to be increased by one per year. Fire stations at Dapodi, Chikli and KSB Chowk are the most urgent since these are the major fire risk areas. The staffing requirement for the stations also needs to be sanctioned by the State Government. The list of existing and proposed fire stations is enclosed as Annexure 6. The estimated cost of proposed additional twelve stations is **Rs. 72 Crs.**

➤ Vehicle Workshop

Fire Services being a technical department and since is expected to respond in emergency needs to be on its toes. The fire vehicles and appliances and the equipments needs to be in good working conditions at all times. Hence, in order to maintain the readiness state of the appliances, regular maintenance, servicing and minor repairs as well as for regular testing of the appliances, a full-fledged independent vehicle workshop for the fire services is essential. The funding requirement of vehicle workshop is included in the cost of fire stations.

➤ Fire Fighting Appliances



Based on the PCMC requirement for appliances as detailed in section 8.1.1 and section 8.1.2 above and comparing with existing appliances, the requirement for additional equipment is worked out. The details about the requirement of appliances are as follows:

Table 22: Funding details of Fire equipments

No.	Type of Appliance	Existing No.	Additional Requirement to PCMC	Cost (Rs. Lakhs Per unit)	Total Amount (Rs. Lakhs)
1	Water Tender	7 Nos	30 Nos	50 Lakhs	1500
2	Mini Fire tender	2 Nos	6 Nos	35 Lakhs	210
3	Advance Rescue/ Emergency Tender	0 Nos	5 Nos	95 Lakhs	475
4	Rescue Tender	1 Nos	14 Nos	80 Lakhs	1120
5	Water Bouser	1 Nos	17 Nos	40 Lakhs	680
6	Flood Rescue Tenders	0 Nos	5 Nos	40 Lakhs	200
7	Foam Tenders	1 Nos	4 Nos	50 Lakhs	200
8	Hazmat Van	0 Nos	2 Nos	175 Lakhs	350
9	Breakdown Van	0 Nos	2 Nos	25 Lakhs	50
10	Hydraulic Platform	0 Nos	4 Nos	800 lakhs	3200
11	Turn Table Ladder (60 & 80 mtr)	0 Nos	2 Nos	700 Lakhs	1400
12	Smoke Blowers	4 Nos	25 Nos	0.5 Lakhs	12.5
13	High Capacity Pumps	6 Nos	7 Nos	10 lakhs	70
14	Portable Pumps	7 Nos	8 Nos	6 lakhs	48



No.	Type of Appliance	Existing No.	Additional Requirement to PCMC	Cost (Rs. Lakhs Per unit)	Total Amount (Rs. Lakhs)
15	Control Post Vans (Communication & Command Vehicle)	0 Nos	01 Nos	90 Lakhs	90
16	Mobile Workshop for repair of Fire Appliances	0 Nos	1 Nos	30 Lakhs	30
17	Flood Rescue Boats	5 Nos	13 Nos	0.5 Lakhs	6.5
18	Breathing Apparatus	20 Nos	40 Nos	0.75 Lakhs	30
19	Ambulance	0 Nos	15 Nos	6 lakhs	90
20	Cars	01 Nos	02 Nos	6 lakhs	12
21	Jeep	01 Nos	02 Nos	5 lakhs	10
22	Life Jackets	40 Nos	310	0.01 Lakhs	3.1
23	Communication Equipment (Fire Station- VHF, Smart Phones, Telephone, HAM Radio, GPS and Video Conferencing)	0 Nos	18 set	800 Lakhs	14400
24	Communication Equipment (Vehicles- VTS and VHF)	0 Nos	124 Set	1 Lakhs	124
25	Details of other Appliances & Equipments – Including Lukas, Nike gears, Pneumatic Lifting	0 Nos	5 Nos of set	100 lakhs	500



No.	Type of Appliance	Existing No.	Additional Requirement to PCMC	Cost (Rs. Lakhs Per unit)	Total Amount (Rs. Lakhs)
	Bags, Search Cameras, Gas Detectors, Thermal Imaging Cameras etc.				
	Total				24811.1 Lakhs

8.5.2 Disaster Management Cell

The fire service not only turns out on normal fire and accident calls but being the only paramilitary equipped force in municipal body is also expected to respond and act promptly in extreme calamities. Hence, an independent disaster management cell is necessary to be set up for fire service department to plan, exercise, review and implement effectively, natural and manmade disasters likely to occur within and nearby area and interact regularly with other emergency operating agencies.

8.5.3 Fire Prevention Cell

Since the department is expected to expand and being shouldered the responsibility of implementing Fire Act 2006, there is a need for a special Fire Prevention Cell for issuing NOC's, checking – inspecting – reviewing – monitoring the installations. In addition, a record of high-rise buildings, special buildings and other structures, including the fire protection systems within the buildings needs to be maintained. The Fire Prevention Cell will also maintain a Fire Risk Register, which will gather information on a systematic process by identifying the assets at risk from fire will assess the level of risk to asset and provide measures to mitigate the risk.

8.5.4 Technical and Administrative Staff

The minimum technical and administrative staff for the urgently proposed station of Dapodi, Chikli and KSB Chowk can be met with the filling up of already sanctioned vacant posts. The maximum posts are vacant due to superannuation, demise and non-filling of the staff. The vacant posts need to be filled up on urgent basis. In addition, additional new Technical and Administrative Posts need to be created in future for smooth functioning of the department.

Table 23: Additional Manpower requirement

No.	Posts	Sanctioned Posts	Posts Filled	Additional Posts Reqd	Remarks
1	Chief Fire Officer	1	1	0	



No.	Posts	Sanctioned Posts	Posts Filled	Additional Posts Reqd	Remarks
2	Deputy Chief Fire Officer	0	0	1	New Posts
3	Divisional Fire Officer	0	0	2	New Post
4	Asst. Divisional Fire Officer	0	0	5	New Post
5	Station Officer	8	2	10	Addtnl Post
6	Asst. Station Officer/ Sub Officer	-	-	35	New Post
7	Training Instructor	-	-	1	New Post
8	Leading Fireman	17	12	78	Addtnl Post
9	Fireman	101	71	199	Addtnl Post
10	Driver	29	18	121	Addtnl Post
11	Watch Room Operator	-	-	40	New Post
12	Administrative Officer	-	-	1	New Post
13	Office Superintendent	-	-	2	New Post
14	Sr. Accountant/Sr. Auditor	0	0	2	New Post
15	Dy. Accountant	0	1	1	Addtnl Post



No.	Posts	Sanctioned Posts	Posts Filled	Additional Posts Reqd	Remarks
16	Statistician cum Record Keeper	-	-	2	New Post
17	Head Clerk	1	0	-	
18	Clerk	2	2	18	Addtnl Post
19	Storekeeper	-	-	2	New Post
20	Asst. Storekeeper	1	1	3	Addtnl Post
21	Computer operator	-	-	4	New Post
22	Foreman	-	-	2	New Post
23	Diesel Mechanic	-	-	5	New Post
24	Fire Pump Mechanic	-	-	4	New Post
25	Auto Electrician	-	-	3	New Post
26	Helper	-	-	10	New Post
27	Peon	1	1	-	
	Total	161	109	519	

8.5.5 Summary of Financial Expenditure

The summary of financial expenditure for setting up of efficient fire fighting system is detailed below.

Table 24: Fund Requirement summary



Sr. No	Fire System Component	Expenditure (Rs. Crore)
1	One Headquarter/Central Fire Station	15 Crs
2	Two Divisional/Zonal Fire Station	20 Crs
3	Fire Station (12)	72 Crs
4	Fire Equipments	248.11 Crs
	Manpower	Funded through PCMC budget after approval of Sanctioned Posts by Urban Development Department, Government of Maharashtra
Total		355.11 Crs